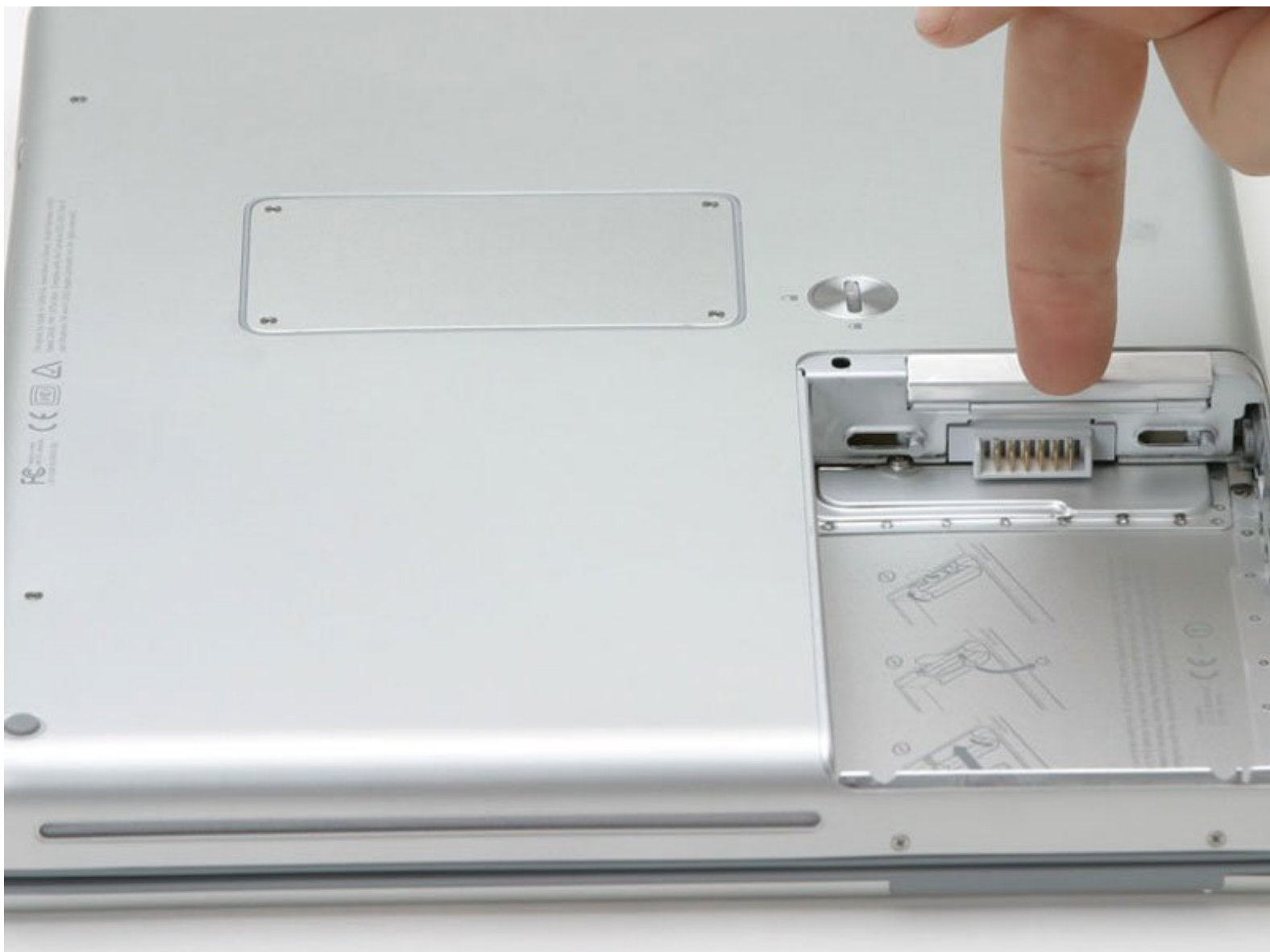




# PowerBook G4 Aluminum 12" 1-1.5 GHz Airport Extreme Card Replacement

Written By: iRobot



## INTRODUCTION

Install an Airport Extreme 802.11g card internally.

### TOOLS:

- [Coin](#) (1)
- [Spudger](#) (1)

### PARTS:

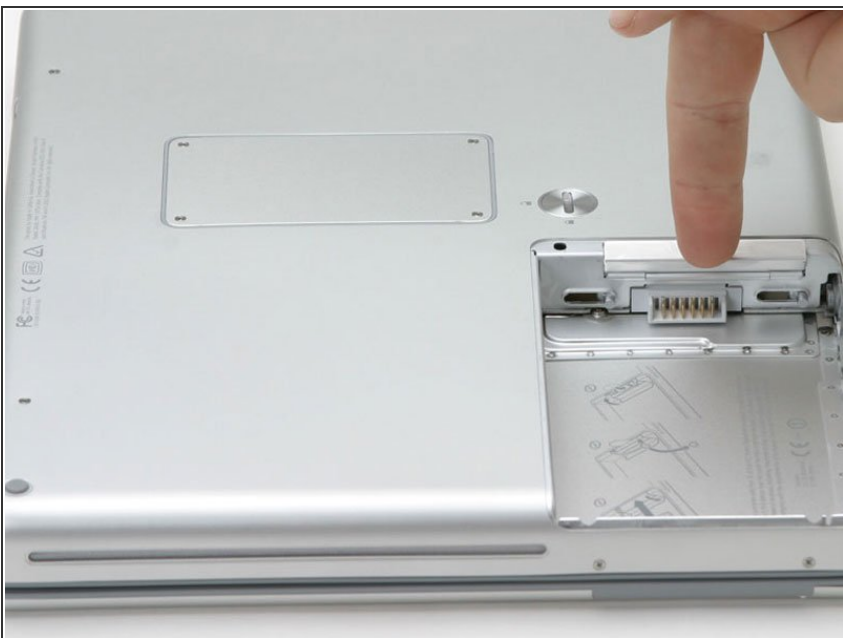
- [Airport Extreme Card](#) (1)
- [G4 Aluminum 12" Airport Card Spacer](#) (1)

## Step 1 — Battery



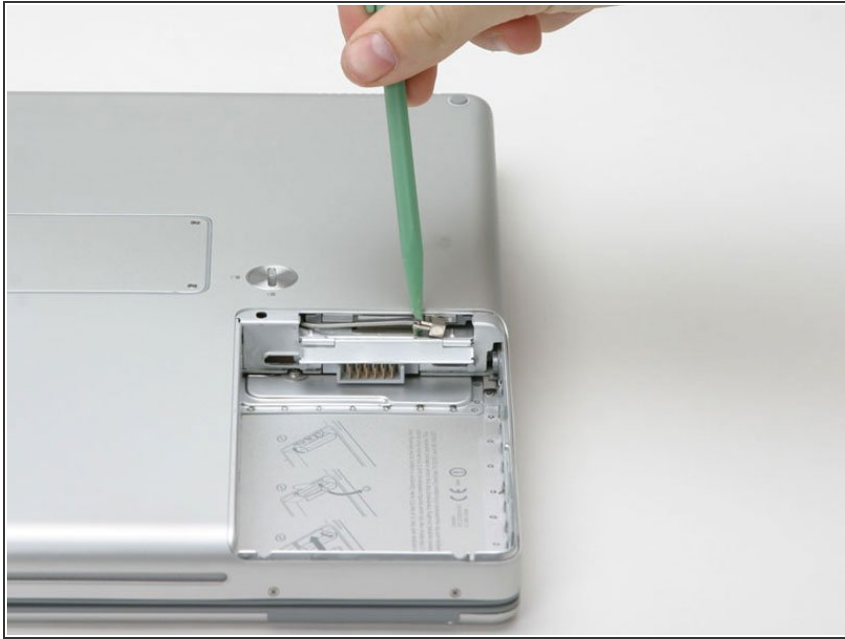
- Use a coin to turn the battery locking screw 90 degrees to the right.
- Lift the battery out of the computer.

## Step 2 — Airport Extreme Card



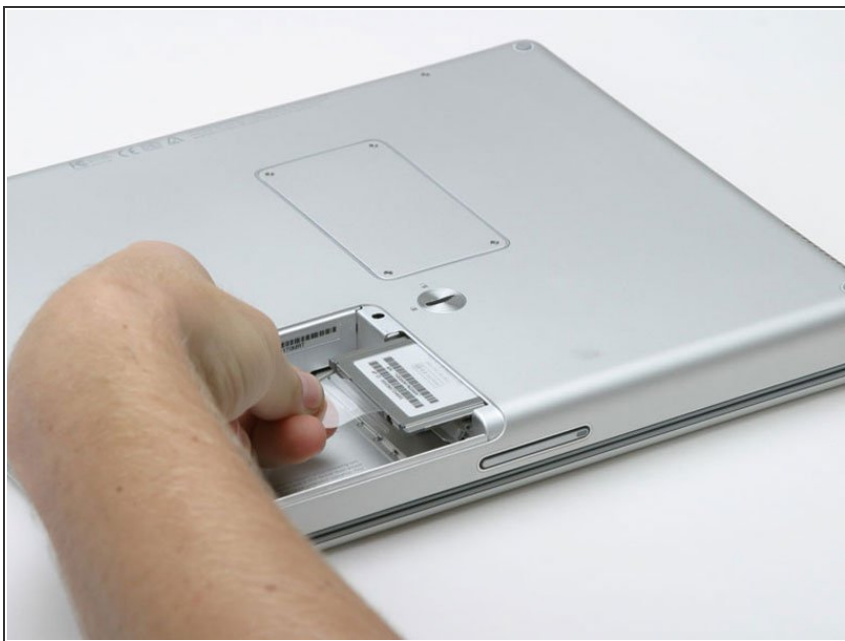
- Flip down the door on the right side of the battery compartment.

### Step 3



- Use a spudger or flathead screwdriver to disconnect the Airport antenna from the card.

### Step 4



- Grasp the plastic tab and pull the card out all the way.

To reassemble your device, follow these instructions in reverse order.