



Nokia Lumia 625 Battery Replacement

Nokia Lumia 625 Battery Replacement

Written By: ZFix



INTRODUCTION

How to disassemble Nokia Lumia 625 to change / replace the battery.

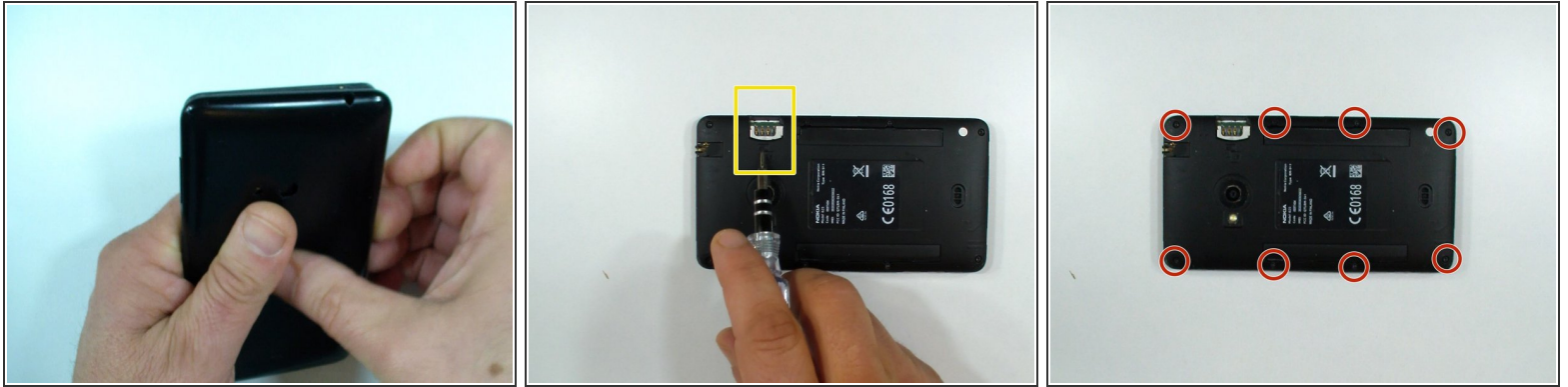
[video: <https://www.youtube.com/watch?v=y9lCxPHLuo0>]



TOOLS:

- [iFixit Opening Picks set of 6](#) (1)
 - [T4 Torx Screwdriver](#) (1)
-

Step 1 — Rear Bezel



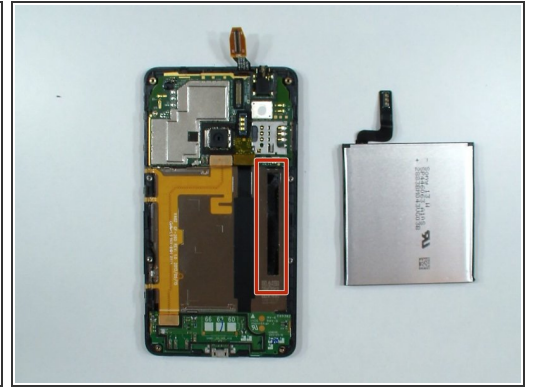
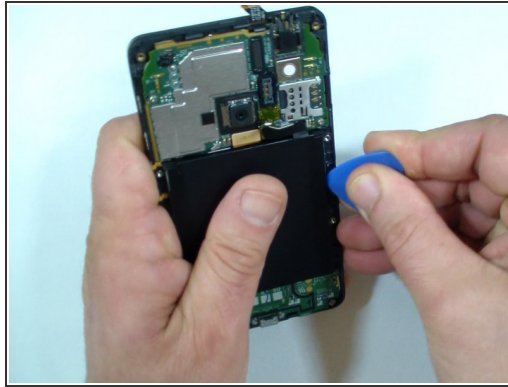
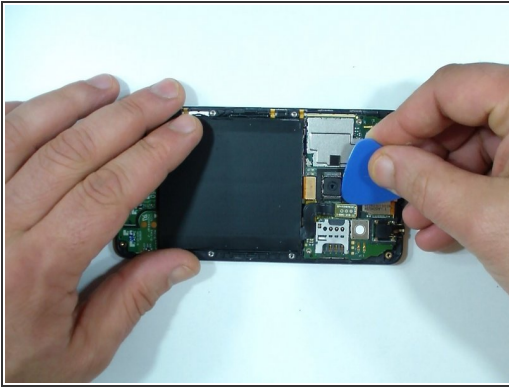
- Turn off the phone and remove the back cover.
- Remove any installed SIM or memory card.
- Use a screwdriver Torx T5 and remove the 8x black screws.

Step 2



- At the top and bottom of the phone you'll see two grooves.
- Use a plastic tool and start the separating the rear bezel from here.

Step 3 — Battery



- Disconnect the battery connector.
- Use a plastic tool and unstuck the battery.
- Look at the picture to see where is the battery adhesive sticker.

To reassemble your device, follow these instructions in reverse order.