



APS Tech 101629 Internal Drive Component Replacement

This guide will provide information on how to remove many internal components and replace the internal drive.

Written By: Alexis Weckel



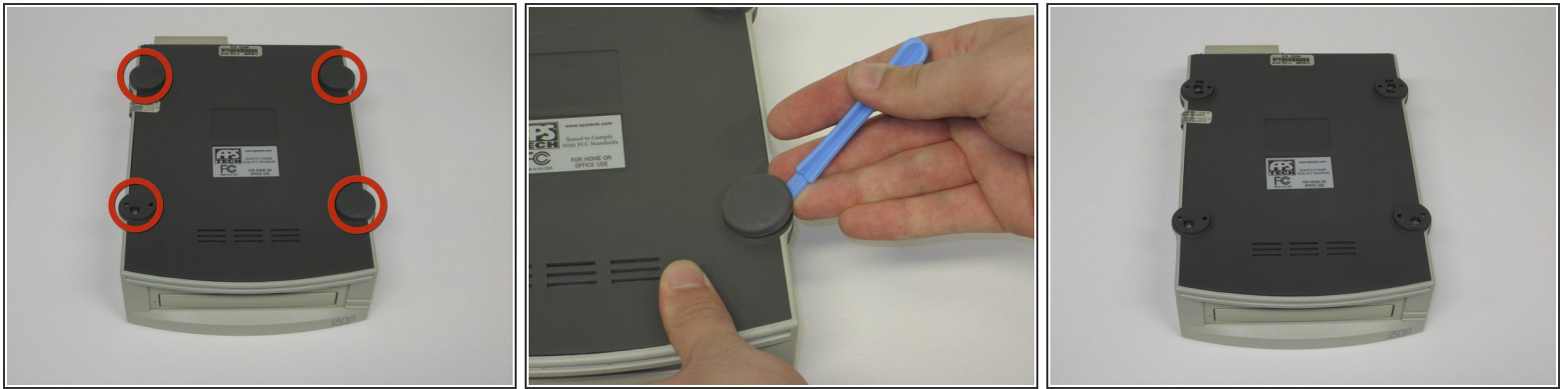
INTRODUCTION

This repair guide will walk you through the steps to removing and replacing the internal drive component of your APS Tech 101629 CD-Drive. First the external casing will need to be removed.

TOOLS:

- [Phillips #1 Screwdriver](#) (1)
 - [iFixit Opening Tools](#) (1)
-

Step 1 — External Casing



- Pry 4 plastic feet off the bottom of the enclosure using the iPod opening tool.

Step 2



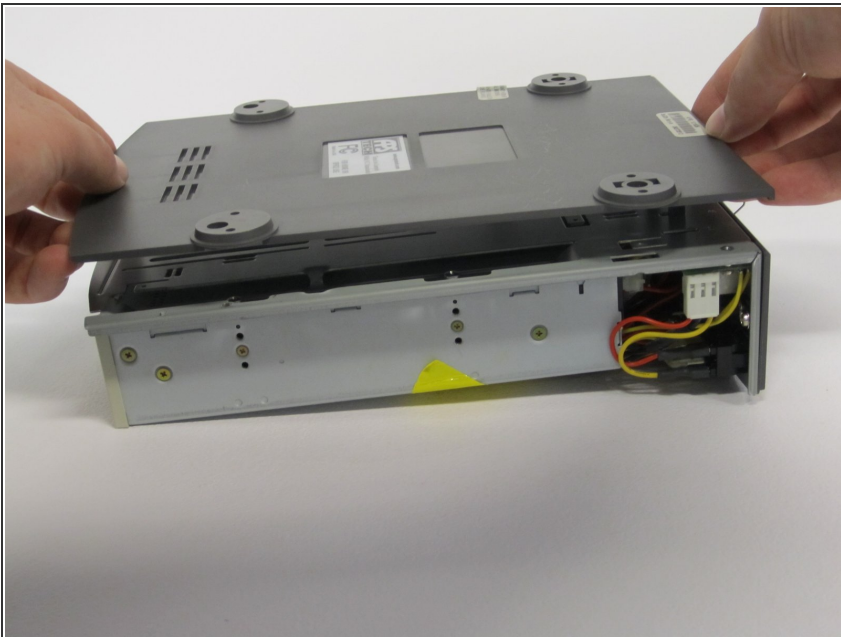
- Unscrew the four screws previously covered by the feet.

Step 3



- Flip the device right side up, then gently slide the casing upwards and off the hard drive.

Step 4



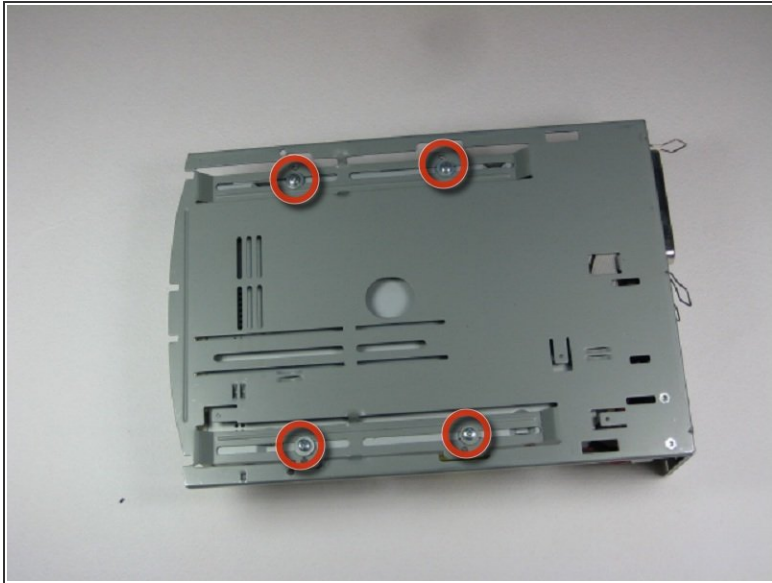
- Flip device upside down again.
- Gently pry the bottom gray casing away from the device.

Step 5



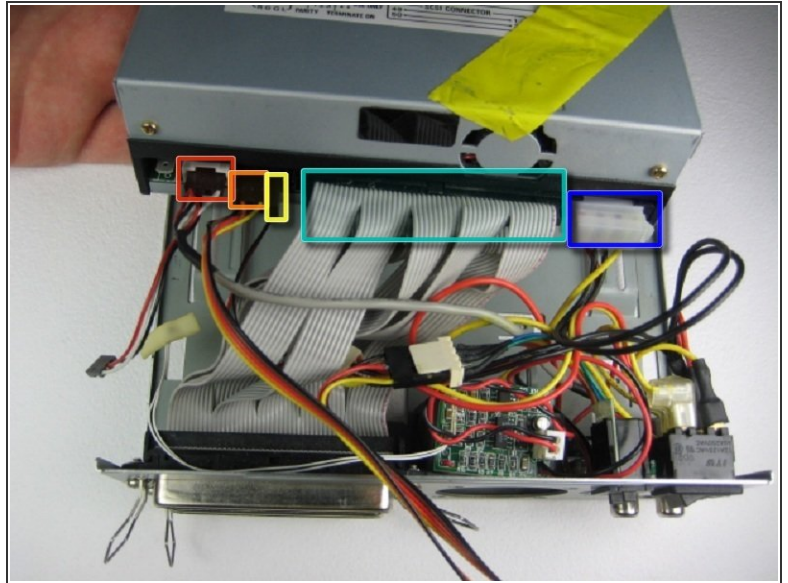
- Rotate so back of device is facing you, then gently pry the back casing away.
- When back casing is removed, the fan will become loose.

Step 6 — Internal Drive Component



- Flip so device is upside down.
- Remove 4 screws with Phillips #1 screw driver.
- ⓘ Be sure to save the washers that separate the screws from the baseplate for reassembly.

Step 7



- Slide the internal drive component away from the back of the device.
- Remove the connections from the back of the internal component in the order of your choosing, we suggest left to right. The connections are:
 - Audio Connection
 - SCSI ID
 - Terminate On
 - SCSI Connection
 - DC Input (power)

To reassemble your device, follow these instructions in reverse order.