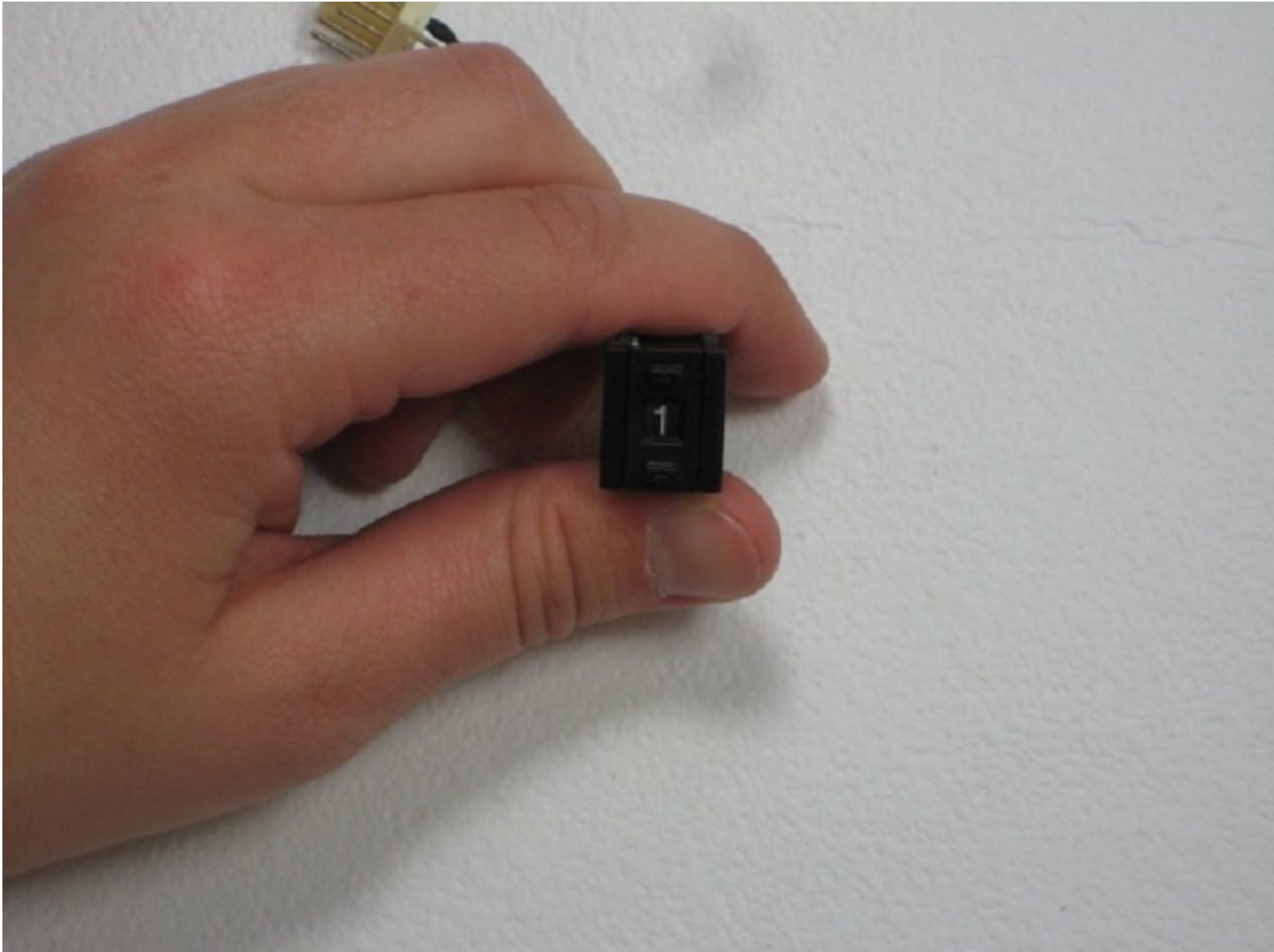




APS Tech 101629 Channel Switch Replacement

This guide will summarize how to open the device and replace the channel switch.

Written By: Alexis Weckel



INTRODUCTION

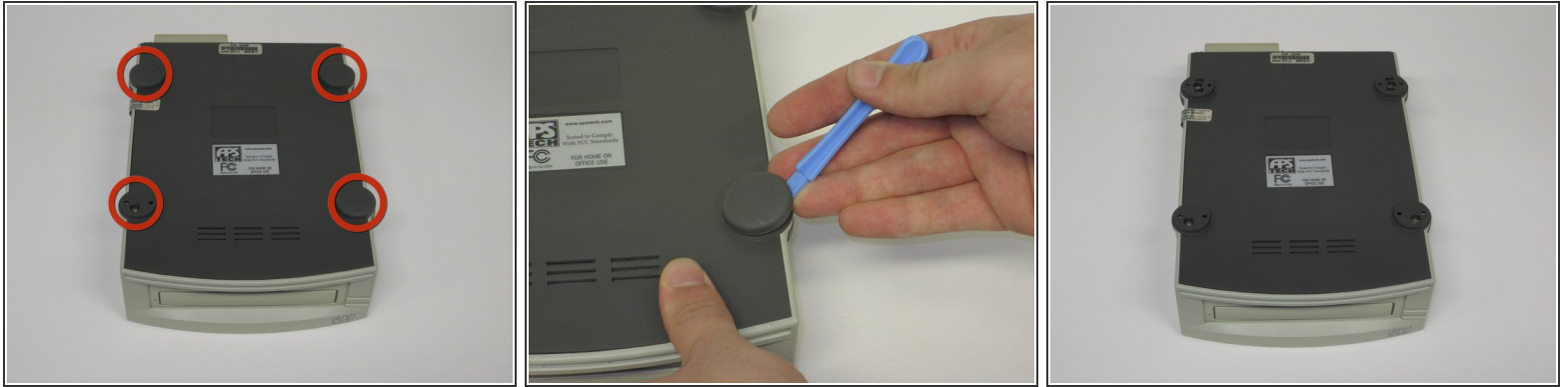
This repair guide will take you through the steps to removing and replacing the channel switch of your APS Tech 101629 CD-Drive. This can be quickly removed and easily replaced.

First the external casing will need to be removed.

TOOLS:

- [Phillips #1 Screwdriver](#) (1)
 - [Spudger](#) (1)
 - [iFixit Opening Tools](#) (1)
-

Step 1 — External Casing



- Pry 4 plastic feet off the bottom of the enclosure using the iPod opening tool.

Step 2



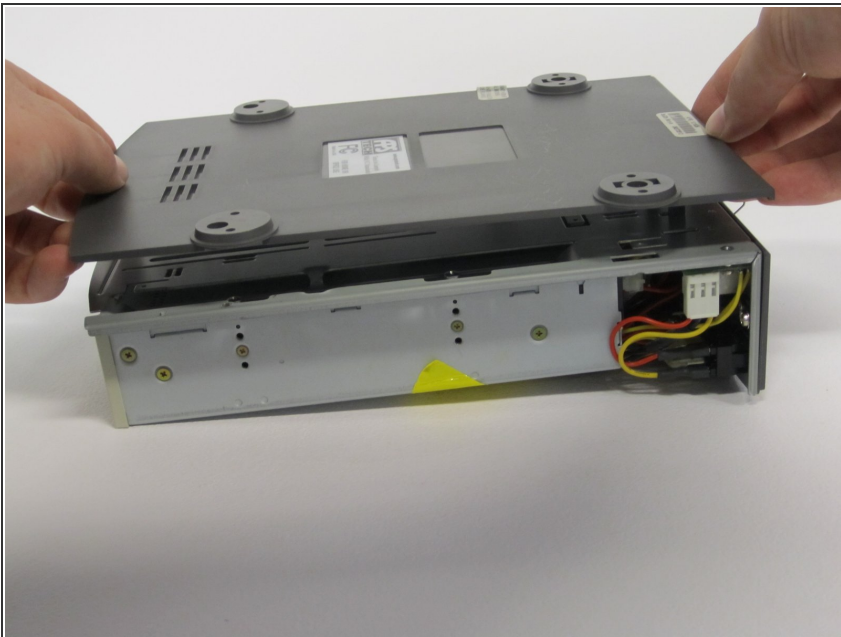
- Unscrew the four screws previously covered by the feet.

Step 3



- Flip the device right side up, then gently slide the casing upwards and off the hard drive.

Step 4



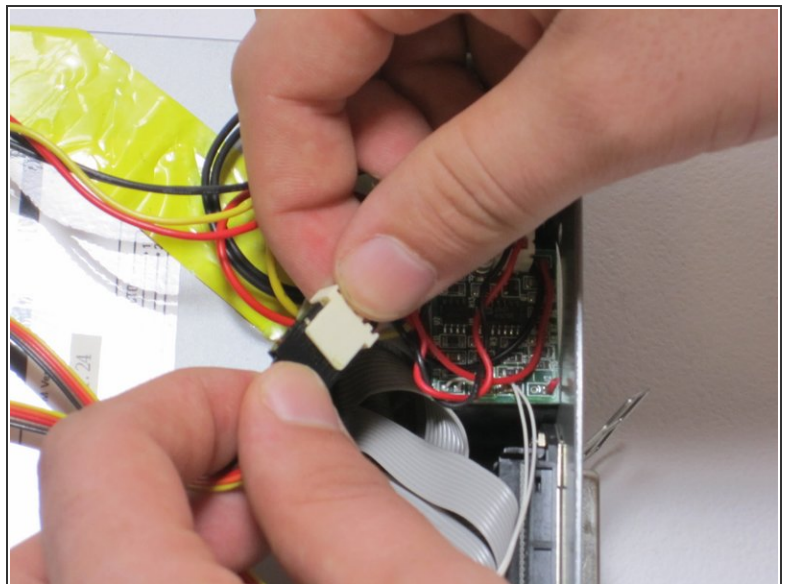
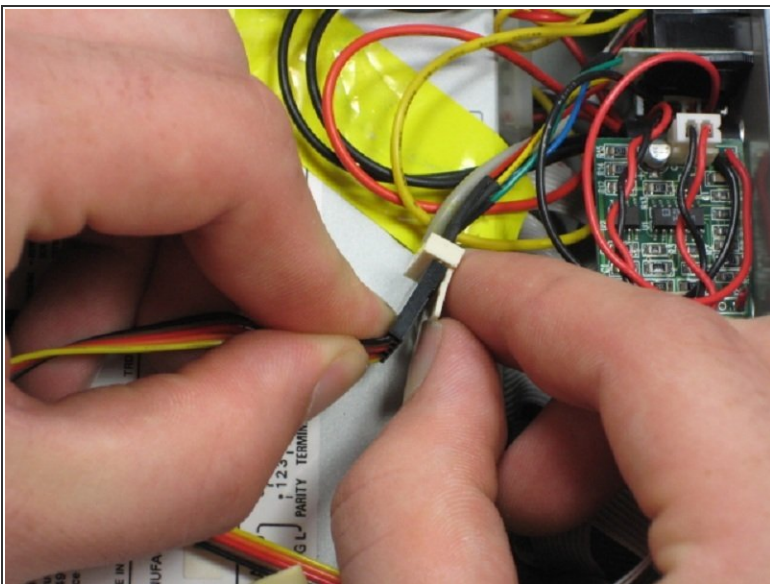
- Flip device upside down again.
- Gently pry the bottom gray casing away from the device.

Step 5




- Rotate so back of device is facing you, then gently pry the back casing away.
- When back casing is removed, the fan will become loose.

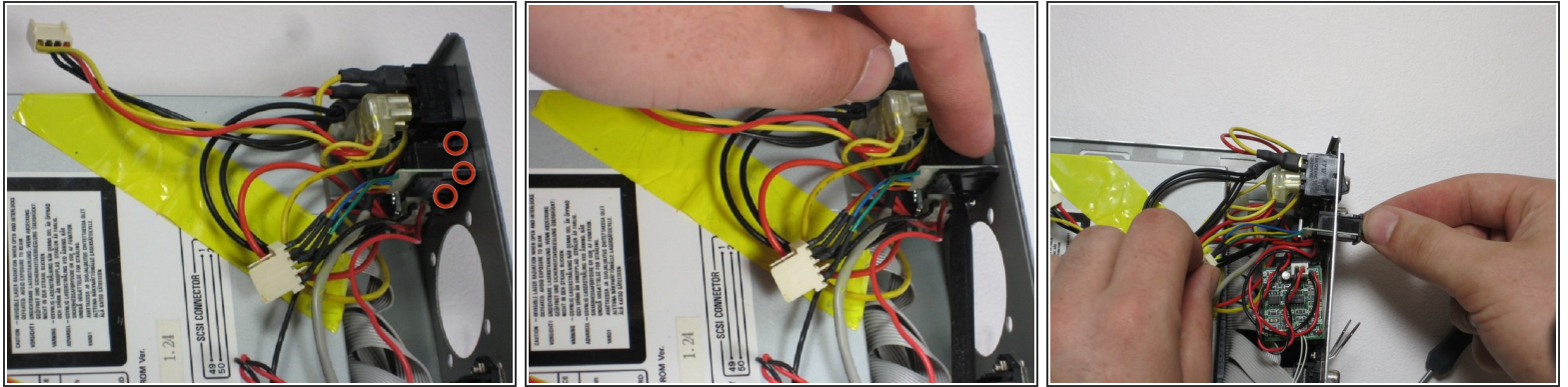
Step 6 — Channel Switch



- Find the conjoined ID cable wires that are colored black, orange, and yellow, and disconnect it from the white portion.

 Make sure to lift the white portion of the connection first.

Step 7



- i** At this point, the fan is loose and can be easily moved but not disconnected.
- Using the spudger, depress the pressure holders at all four corners of the fan.
 - Take out the fan and its cords, by pulling it outward from its cavity within the device.

To reassemble your device, follow these instructions in reverse order.

This document was last generated on 2019-07-22 11:20:03 AM.