



# Replacing the SSD

Written By: Felice Suglia



**TOOLS:**

- [Phillips #0 Screwdriver](#) (1)

**PARTS:**

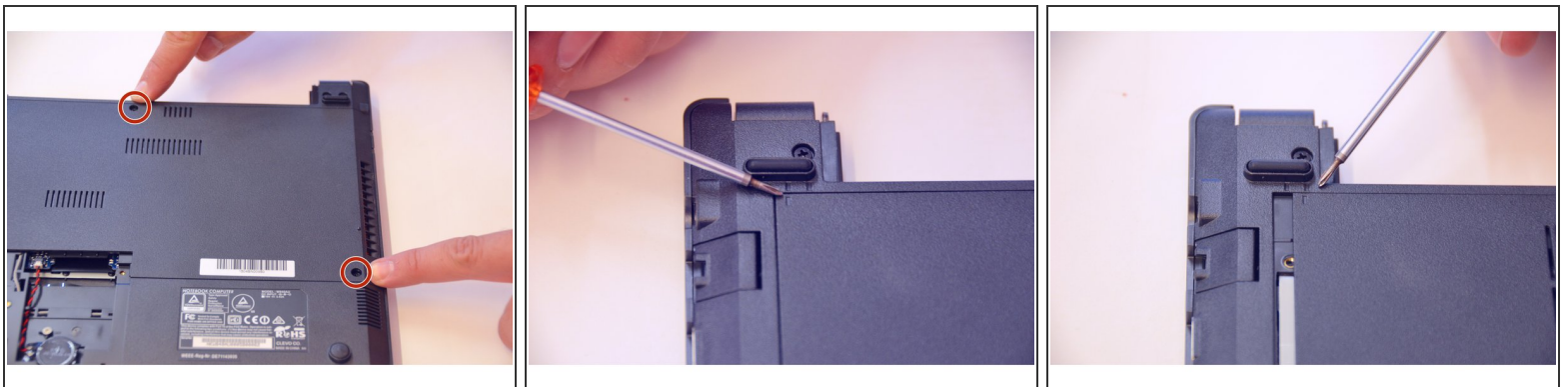
- [New Item](#) (1)
- [New Item](#) (1)
- [New Item](#) (1)
- [New Item](#) (1)
- [New Item](#) (1)
- [New Item](#) (1)
- [New Item](#) (1)
- [New Item](#) (1)

## Step 1 — Battery



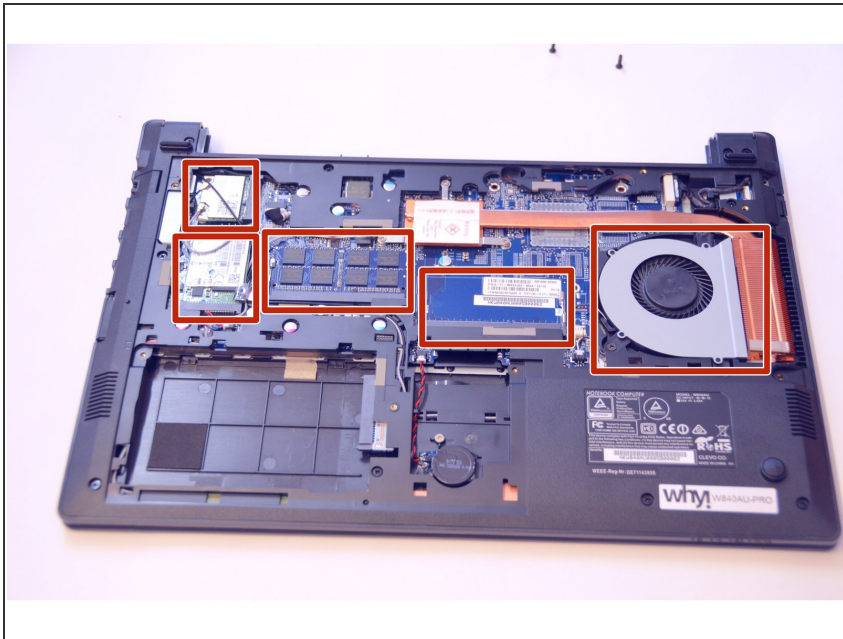
- Unlock the battery latch on the right.
- Unlock the battery lock on the left.
- Remove the battery pack from its slot.

## Step 2 — Access to Components 2



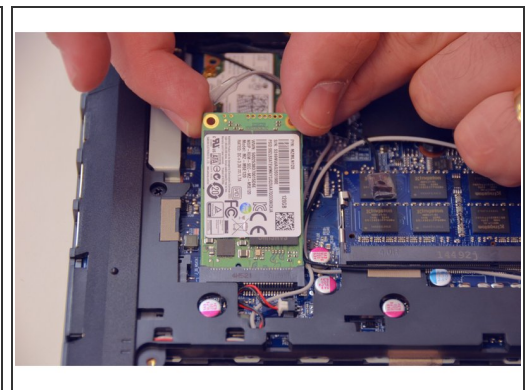
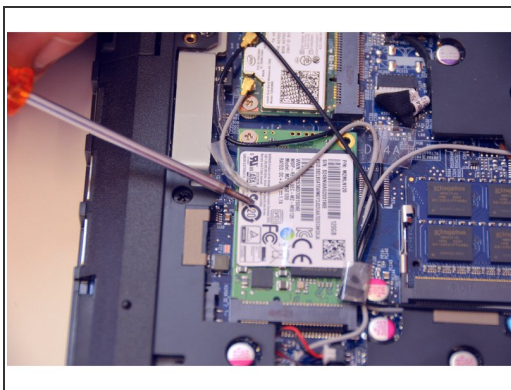
- Using the Philips # 0 screwdriver, unscrew the 2 screws of the top cover
- Check the marks indicating the direction in which the cover must be removed.
- Remove the bottom cover by removing it in the direction of the markers.

### Step 3



- Then appear the other components of the Laptop.

### Step 4 — SSD disk



- This is the SSD drive
- Unscrew the fixing screw of the SSD using the Philips # 0 screwdriver.
- Remove the SSD.

## Step 5



- Here is the SSD drive out of its slot.

For reassembly, follow the instructions in reverse order.