



LCD screen Replacement

Written By: Felice Suglia



**TOOLS:**

- [Phillips #0 Screwdriver](#) (1)

**PARTS:**

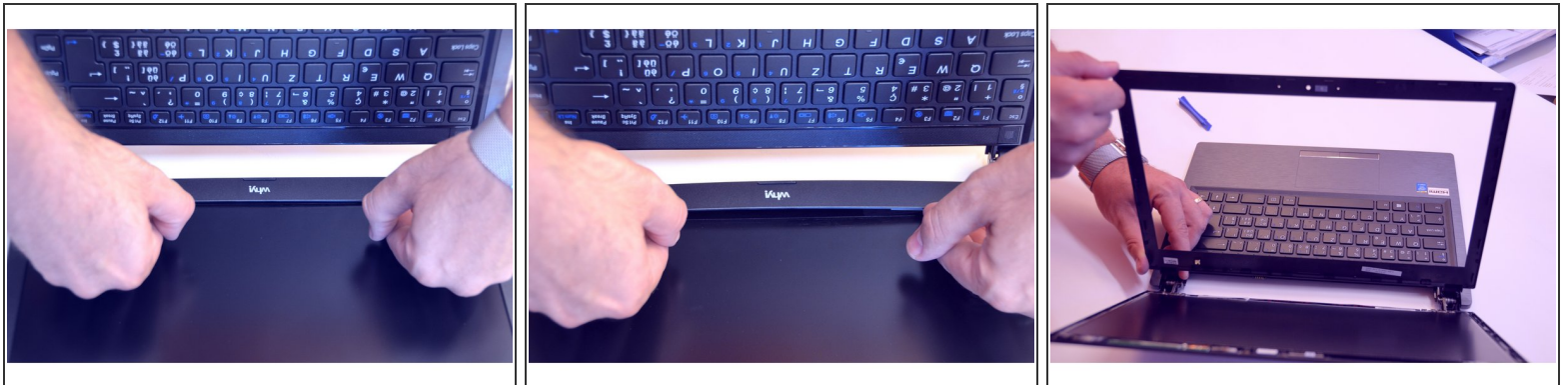
- [New Item](#) (1)
- [New Item](#) (1)
- [New Item](#) (1)
- [New Item](#) (1)
- [New Item](#) (1)
- [New Item](#) (1)
- [New Item](#) (1)

Step 1 — Battery



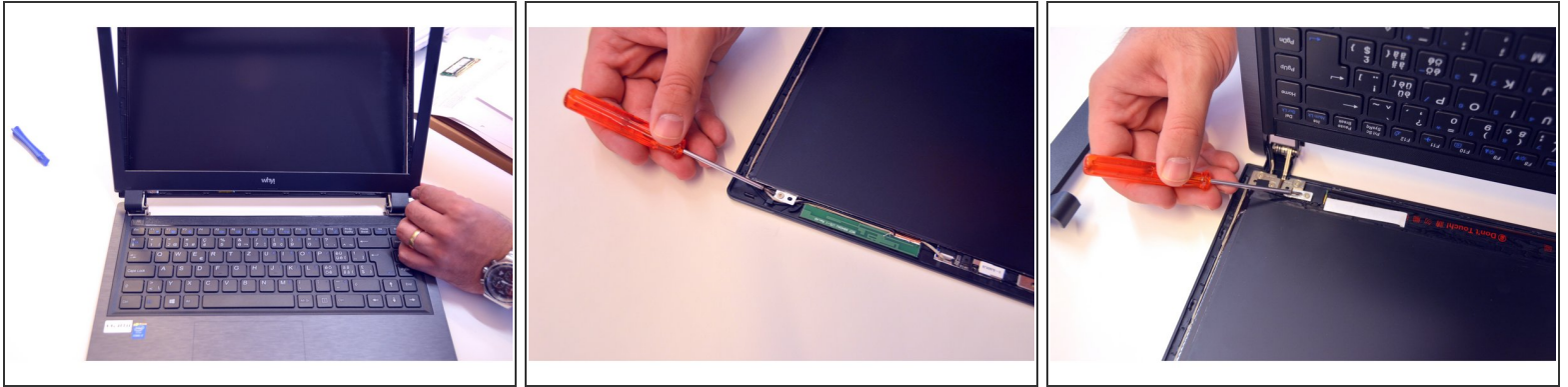
- Unlock the battery latch on the right.
- Unlock the battery lock on the left.
- Remove the battery pack from its slot.

Step 2 — LCD screen



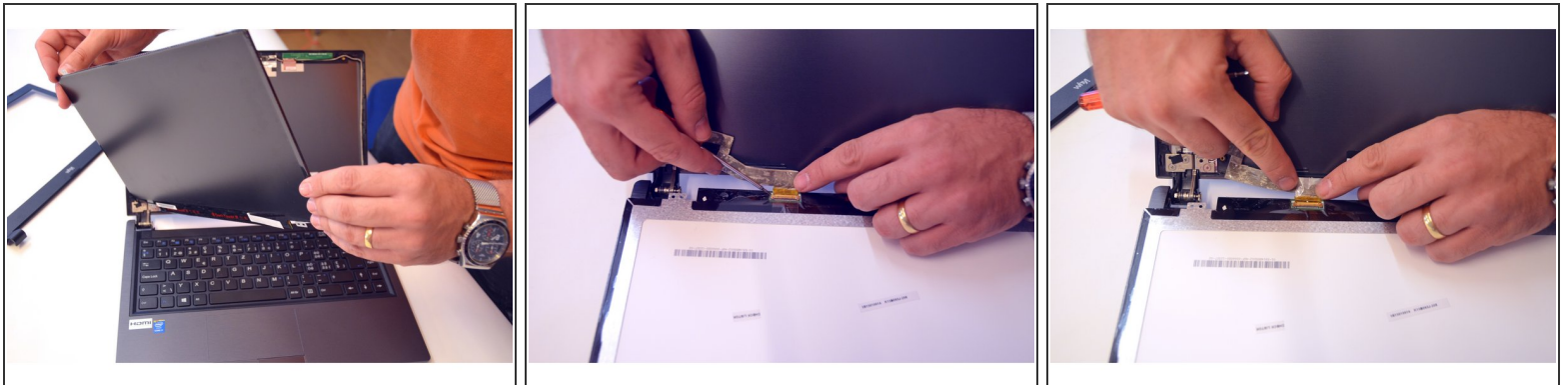
- Gently insert the fingernail between the screen frame and the screen glass.
- De-clipping one by one the fixing points of the frame surrounding the LCD screen

Step 3



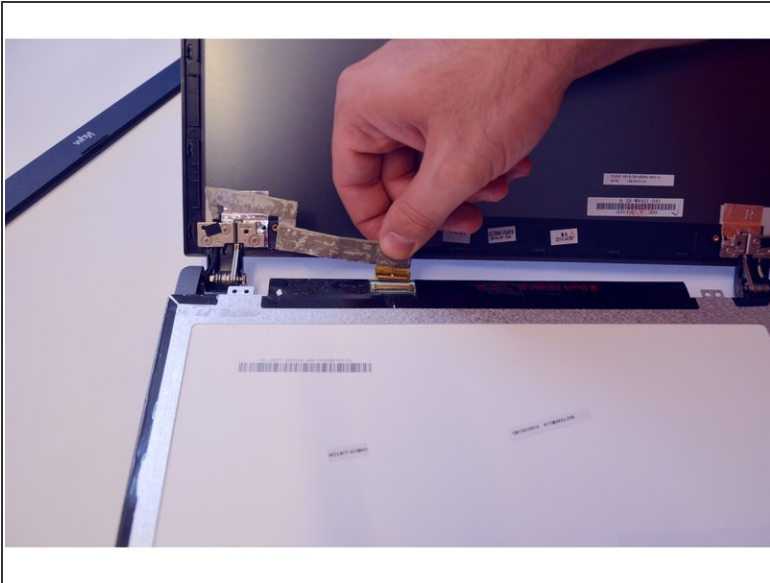
- Completely detach the frame surrounding the LCD screen.
- Mark the 2 upper fixing screws of the LCD screen. Unscrew them.
- Mark the two lower fixing screws on the LCD screen. Unscrew them.

Step 4



- Gently lay the LCD screen on the keyboard.
- Locate the connector on the LCD screen
- Release the connection cable.

Step 5



- Remove the connector.
- Once the connector is removed, completely remove the LCD screen.

To reassemble your device follow the following instructions in reverse order