



Replace WLAN / Bluetooth chipset

Written By: Felice Suglia



 **TOOLS:**

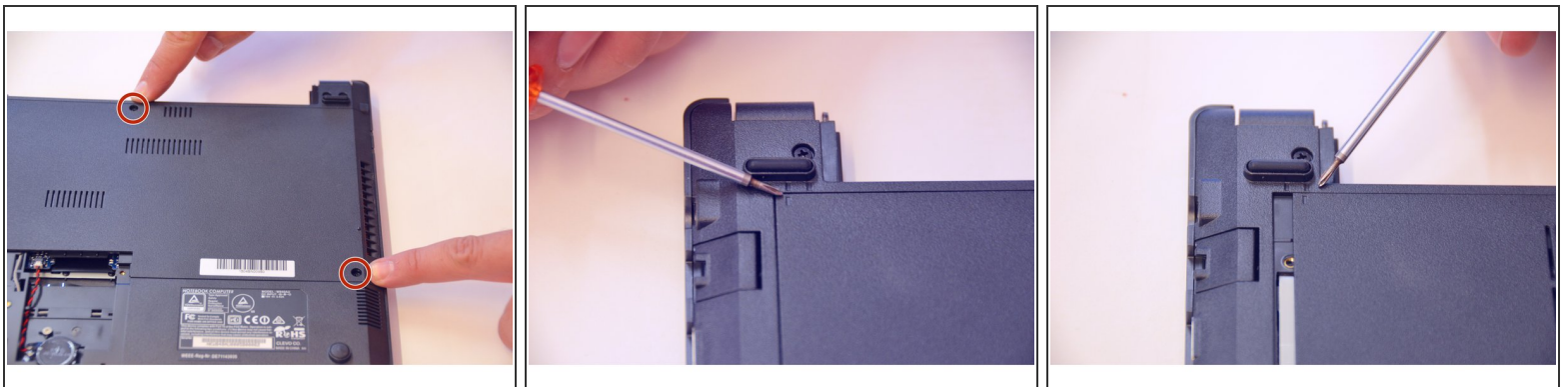
- [Phillips #0 Screwdriver](#) (1)
-

Step 1 — Battery



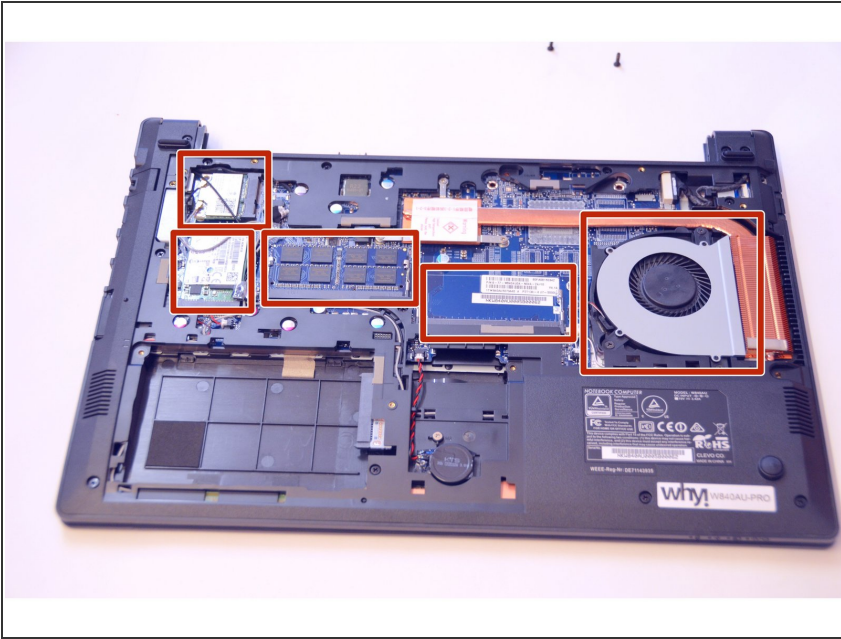
- Open the latch on the right side that secures the battery in place.
- Open the latch on the left side that secures the battery in place.
- Now remove the battery.

Step 2 — Main access cover



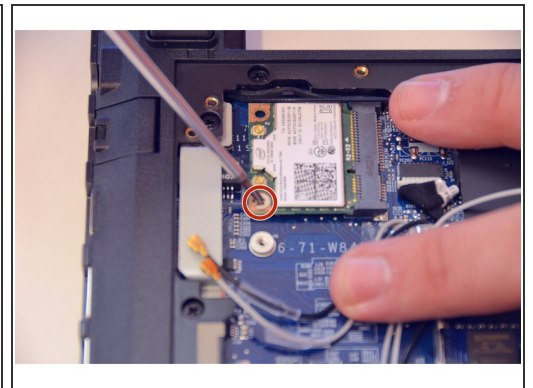
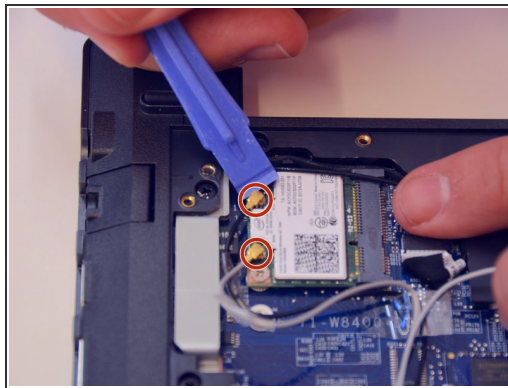
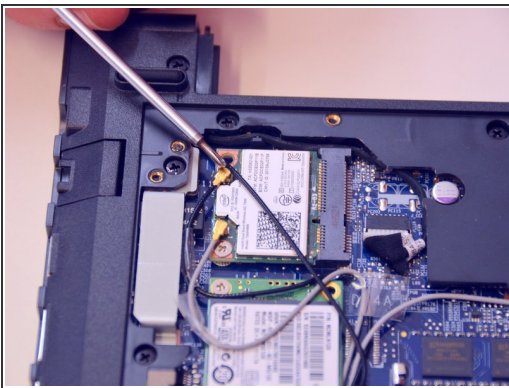
- Using a Philips-head screwdriver remove highlighted screws.
- Look at the marking to see how to remove the access cover.
- Remove the access cover as shown by the marker.

Step 3



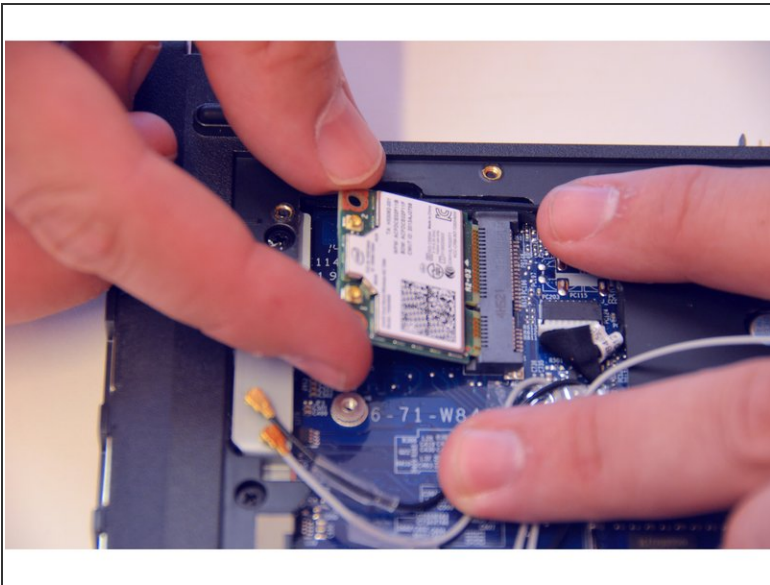
- You now have access to all components of this laptop.

Step 4 — WLAN/Bluetooth Chipset



- Here is the chipset WLAN / Bluetooth.
- Carefully loosen the antenna plugs MAIN and AUX.
- Loosen the fixing screw with the Philips screwdriver.

Step 5



- Lift the chipset a little and pull it out to the mSATA connector.
- Lift the chipset a little and pull it out to the mSATA connector.

To assemble the device again, proceed in reverse order.