



# Upgrading the SSD

Written By: Felice Suglia



---

 **TOOLS:**

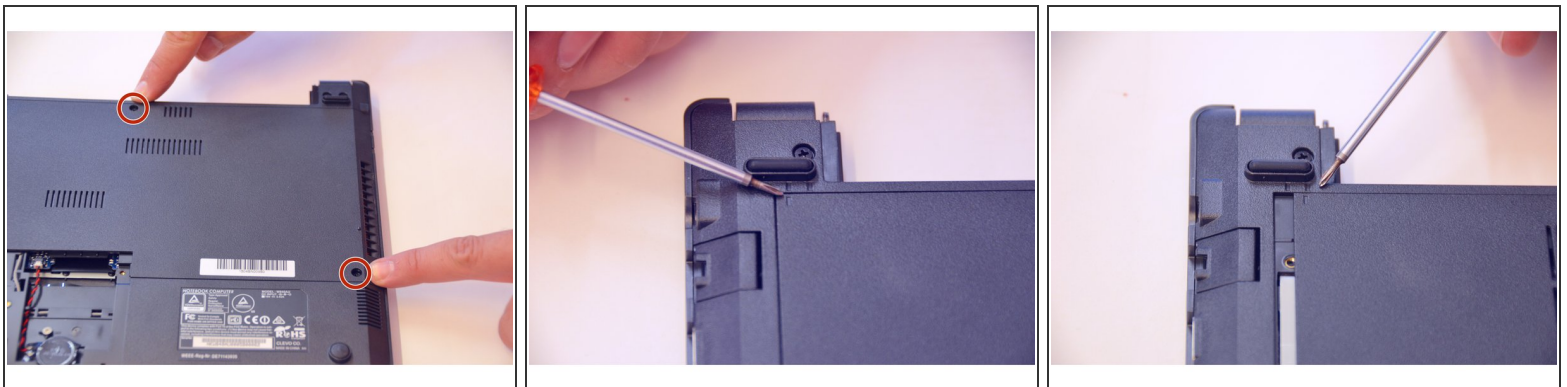
- [Phillips #0 Screwdriver](#) (1)
-

## Step 1 — Battery



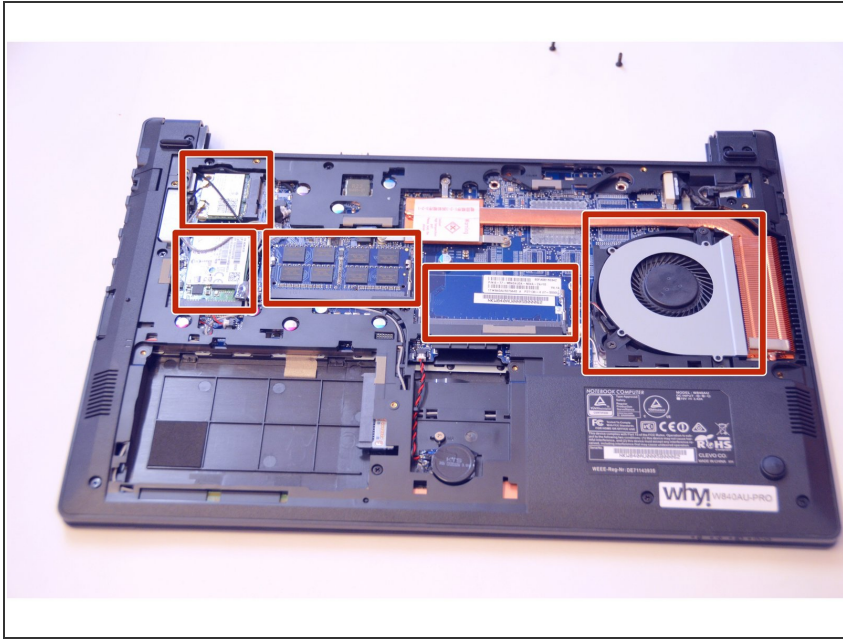
- Open the latch on the right side that secures the battery in place.
- Open the latch on the left side that secures the battery in place.
- Now remove the battery.

## Step 2 — Main access cover



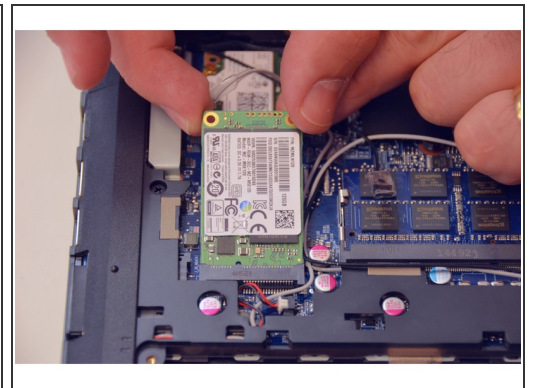
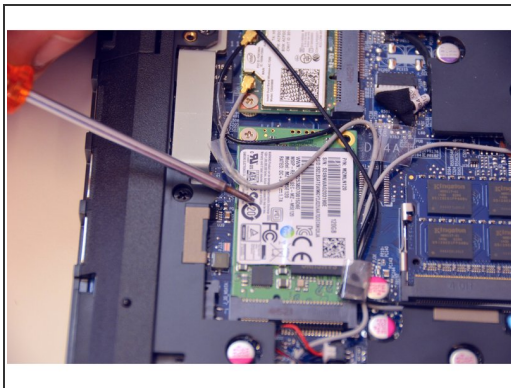
- Using a Philips-head screwdriver remove highlighted screws.
- Look at the marking to see how to remove the access cover.
- Remove the access cover as shown by the marker.

### Step 3



- You now have access to all components of this laptop.

### Step 4 — PCIe SSD



- This is where you'll find the PCIe SSD.
- Remove the fastening screw with the Philips-head screwdriver.
- Remove the PCIe SSD.

## Step 5



- This is what the PCIe SSD looks like.

To put the device back together, follow the steps in reverse order.

This document was last generated on 2019-07-14 09:44:31 PM.