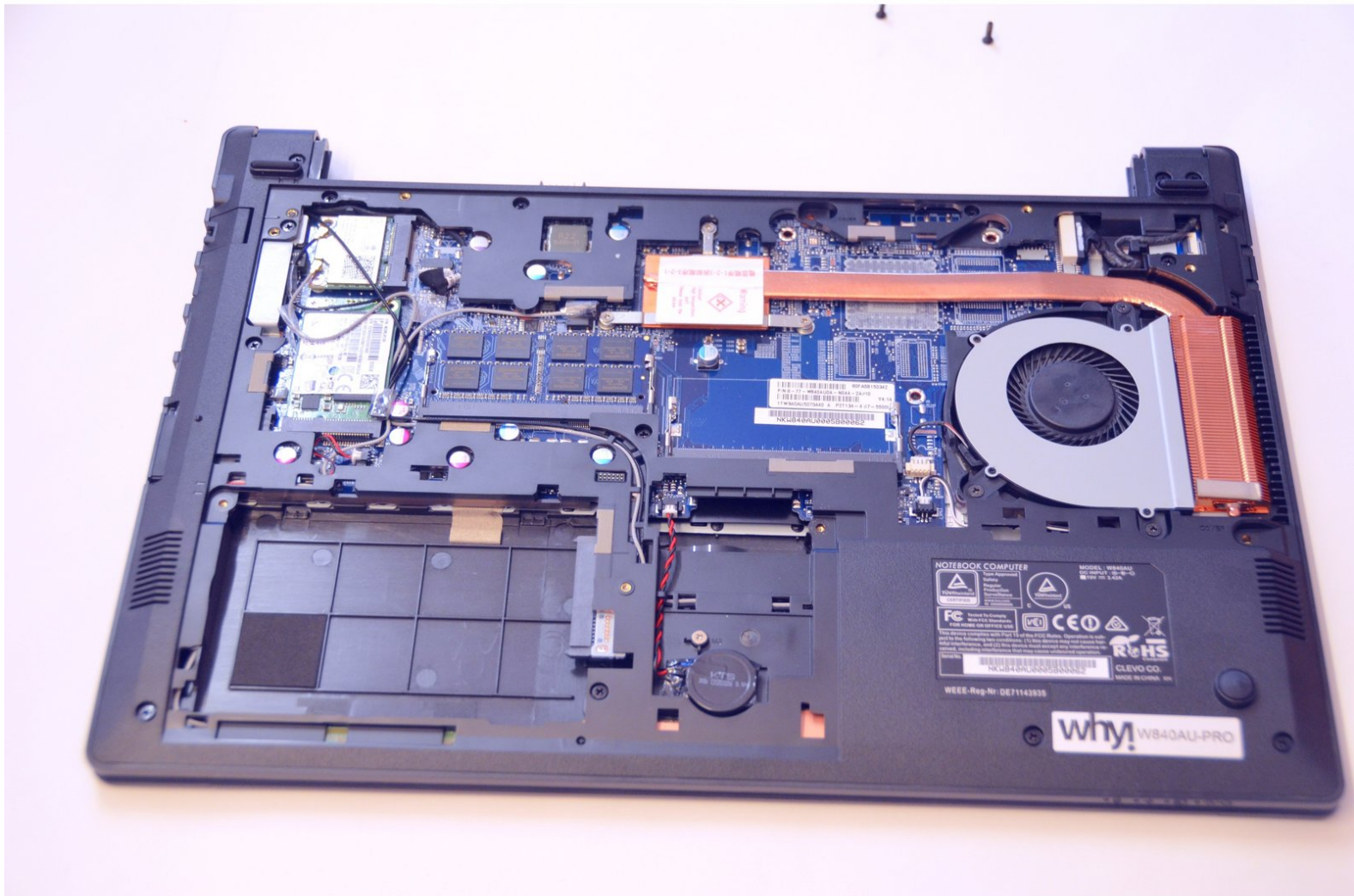




# Access to Components 2

Written By: Felice Suglia



---

 **TOOLS:**

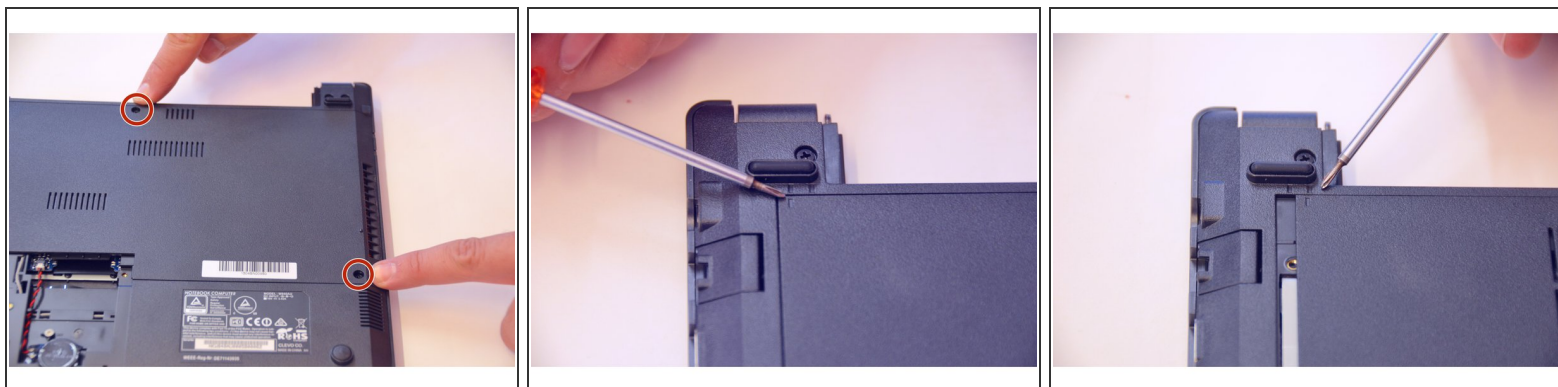
- [Phillips #0 Screwdriver](#) (1)
-

## Step 1 — Battery



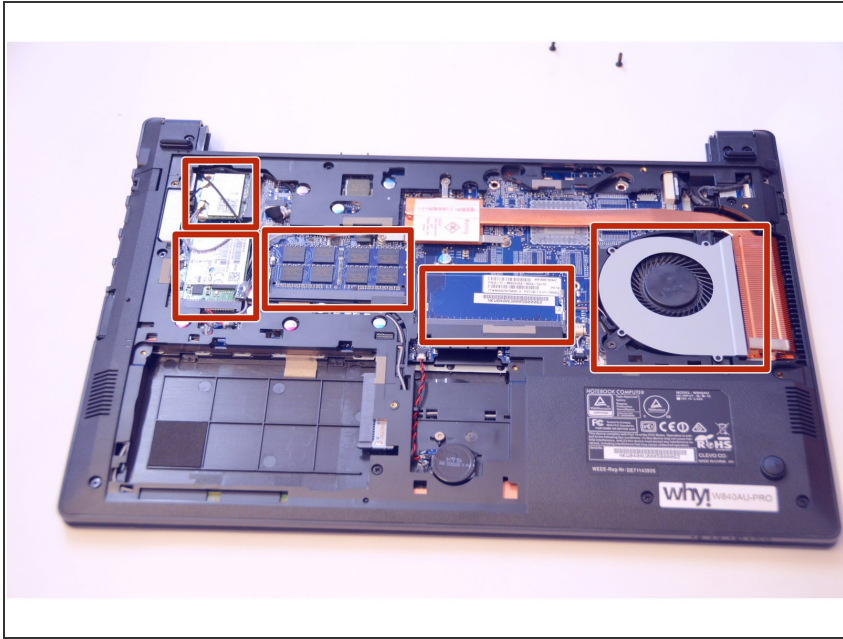
- Unlock the battery latch on the right.
- Unlock the battery lock on the left.
- Remove the battery pack from its slot.

## Step 2 — Access to Components 2



- Using the Philips # 0 screwdriver, unscrew the 2 screws of the top cover
- Check the marks indicating the direction in which the cover must be removed.
- Remove the bottom cover by removing it in the direction of the markers.

### Step 3



- Then appear the other components of the Laptop.

For reassembly, follow the instructions above in the reverse order.