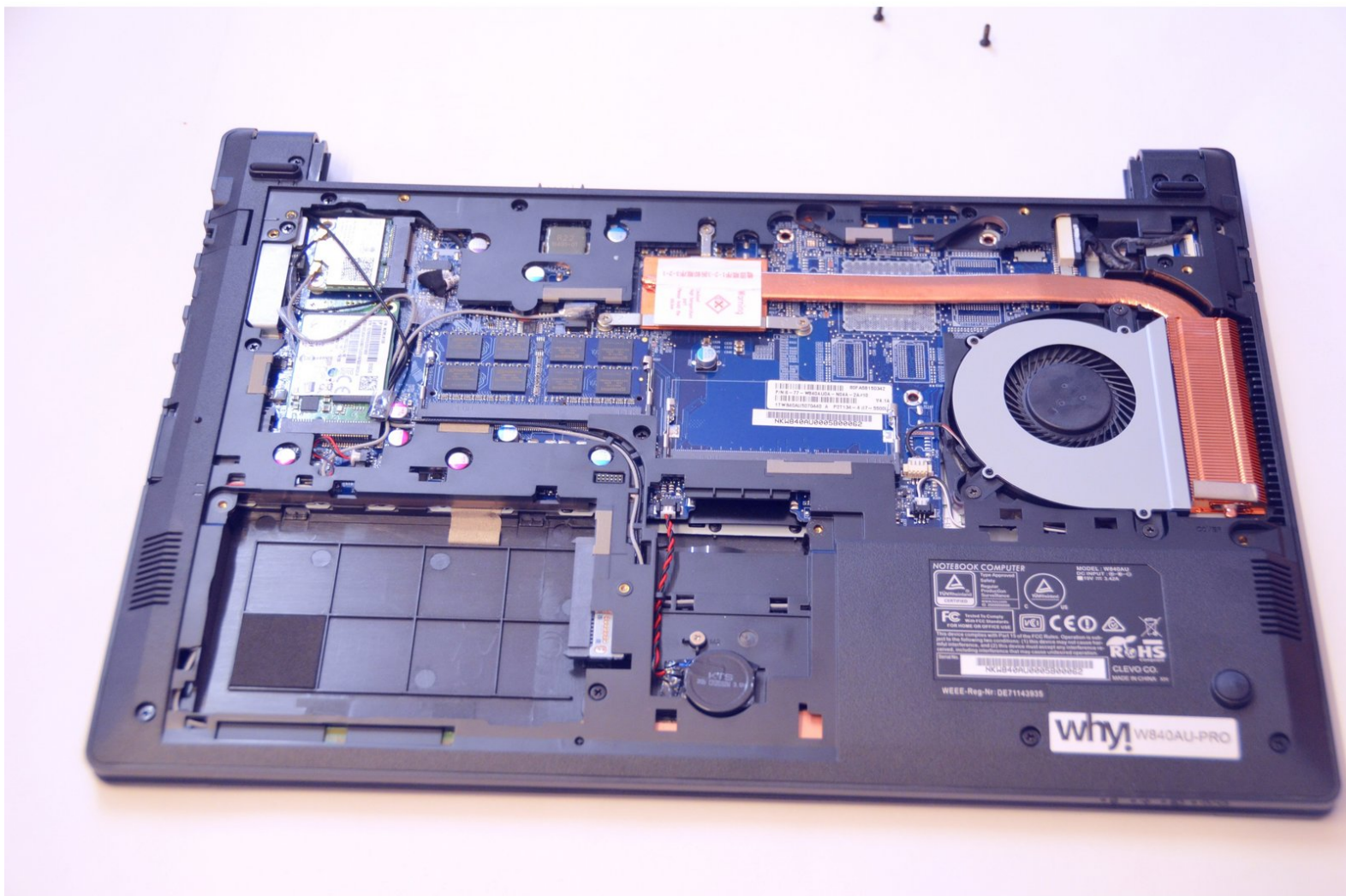




Main access cover

Written By: Felice Suglia



 **TOOLS:**

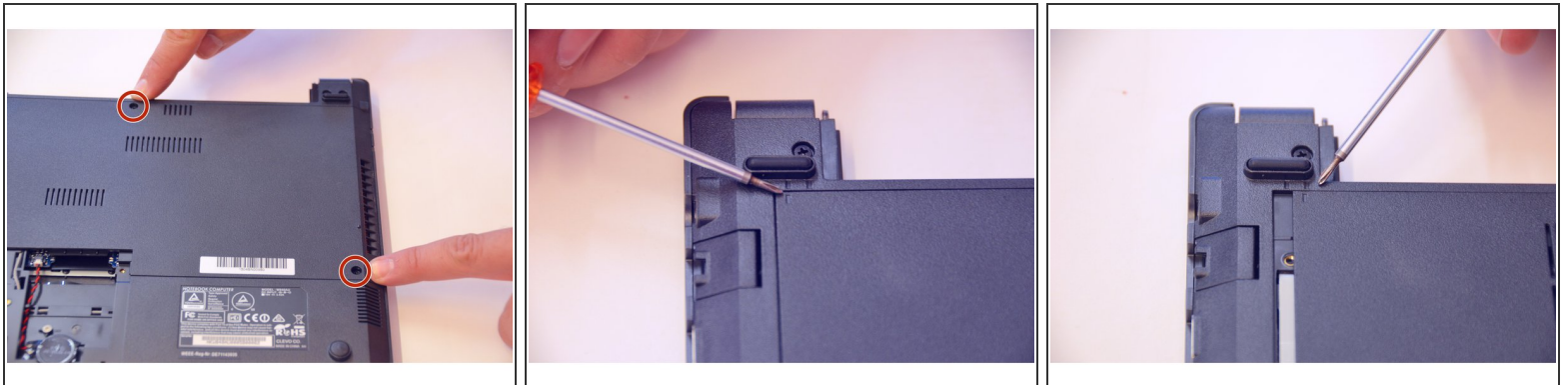
- [Phillips #0 Screwdriver \(1\)](#)
-

Step 1 — Battery



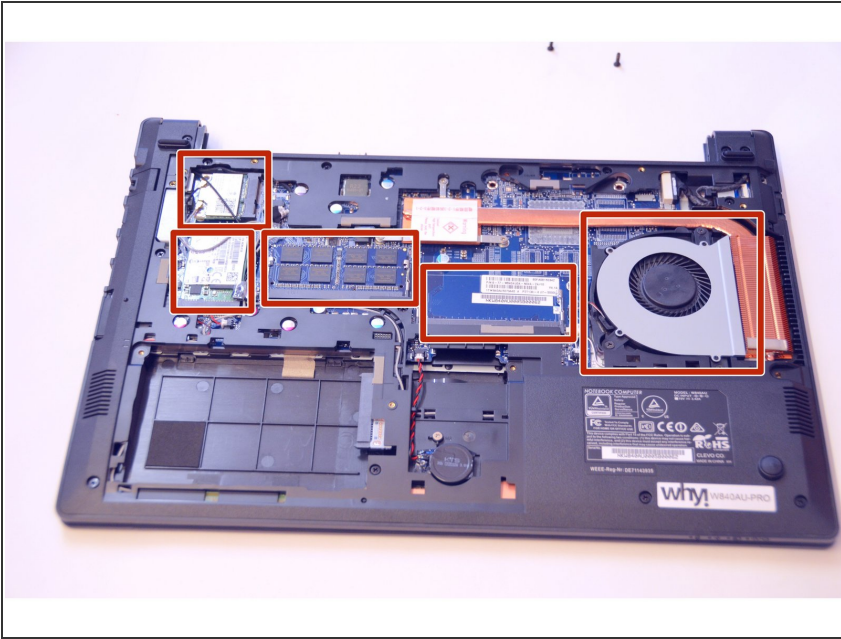
- Open the latch on the right side that secures the battery in place.
- Open the latch on the left side that secures the battery in place.
- Now remove the battery.

Step 2 — Main access cover



- Using a Philips-head screwdriver remove highlighted screws.
- Look at the marking to see how to remove the access cover.
- Remove the access cover as shown by the marker.

Step 3



- You now have access to all components of this laptop.

To put the device back together, follow these steps in reverse order.