



Samsung NX Mini Battery Replacement

This guide will show you how to replace the battery in your Samsung NX Mini camera.

Written By: Kelsea Weber



INTRODUCTION

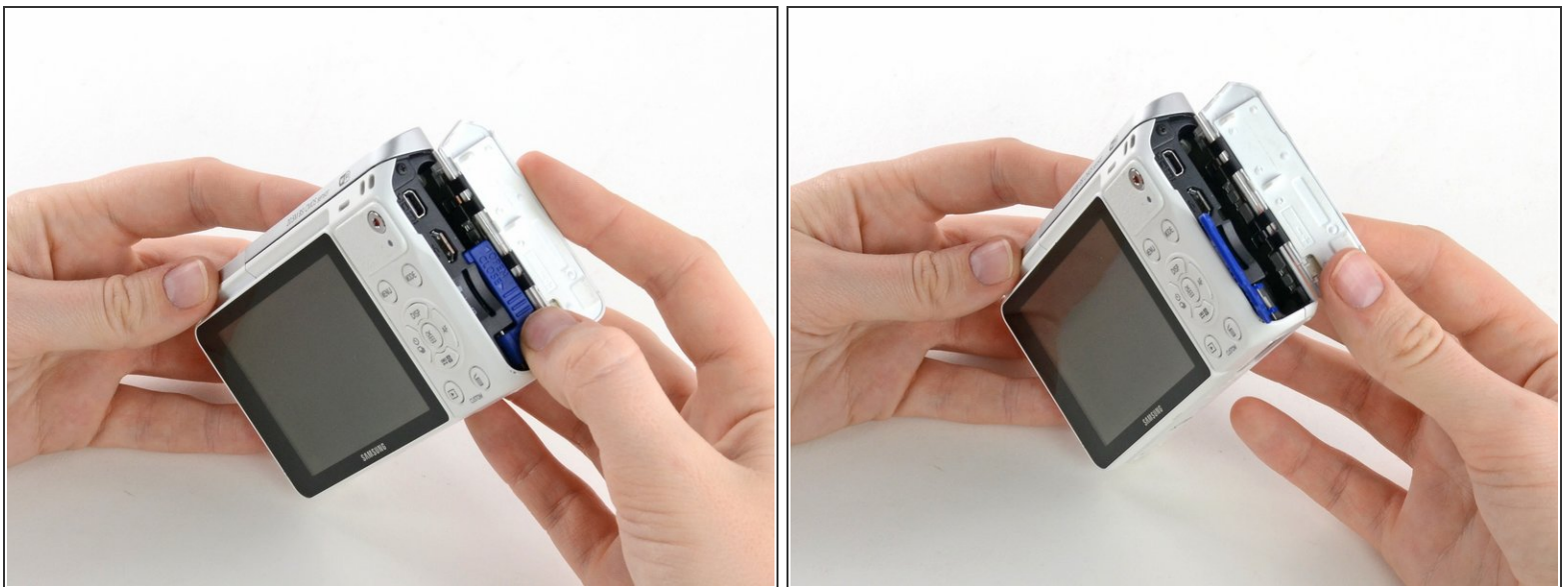
Camera not turning on? The battery may need to be recharged or replaced. Use this guide to replace the battery and get back to taking awesome photos!


Step 1 — Battery



- Orient the camera so the button panel and LCD are facing you.
- Use a spudger or fingernail to open the battery compartment on the right side of the camera.

Step 2



- Push the blue trapdoor to the left to release the battery, and remove the battery.
-  There is no battery shown in this photo.

To reassemble your device, follow these instructions in reverse order.