



Nokia Lumia 920 Screen Replacement

This guide will show you how to remove your old or broken Lumia 920 screen and replace a new one.

Written By: Brian ifikske



INTRODUCTION

First, gather the tools and parts required. If you want, buy or make a screw tray so you don't have to figure out which screw goes where.

TOOLS:

- [iSesamo Opening Tool](#) (1)
 - [iFixit Opening Tools](#) (1)
 - [T5 Torx Screwdriver](#) (1)
-

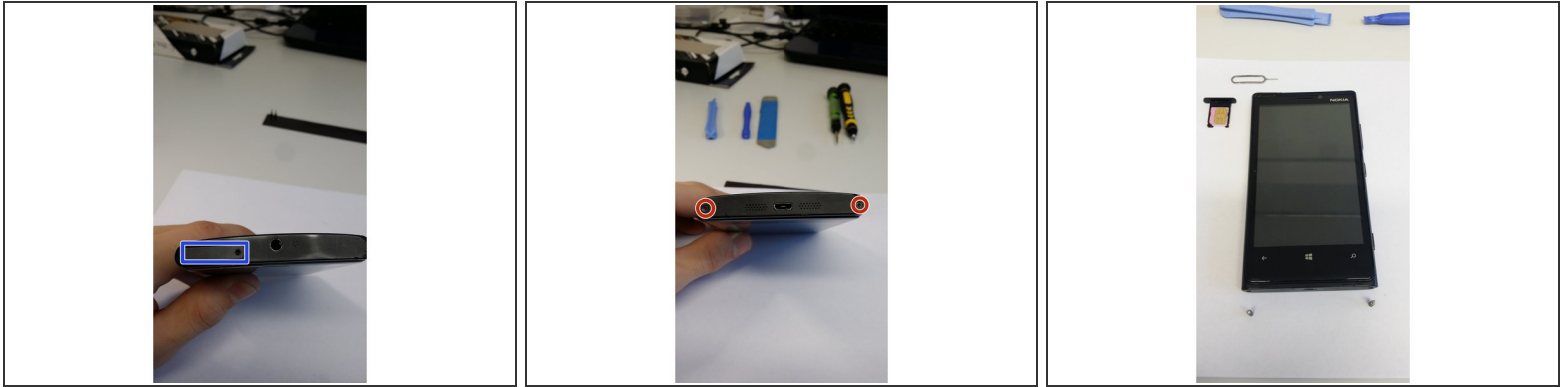
Step 1 — The Screen



i Today i will explain how to replace the screen from a Nokia Lumia 920

- Specs:
- Storage: 32GB
- Camera Resolution: 8.7 megapixel
- Battery talk time: a little more than 18 and a half hours
- Screen resolution: 1280 X 768
- CPU: Dual core 1.5 GHz Krait chip

Step 2 — Bottom screws & sim card reader



⚠ Turn off your device **BEFORE STARTING** disassembly!

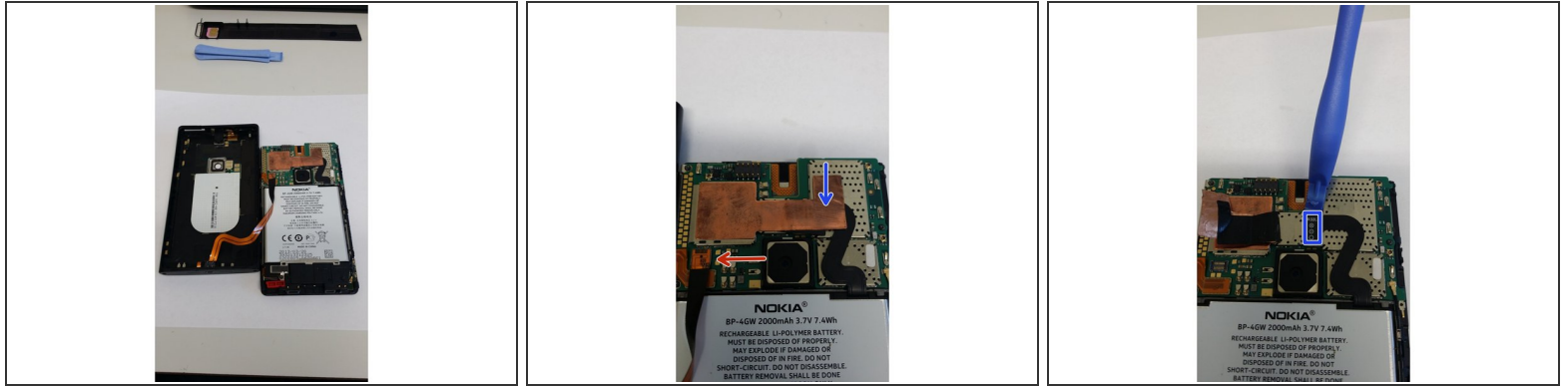
- Remove the SIM tray on the top of the Lumia 920.
- Remove both Torx T5 screws on the bottom

Step 3 — Back cover



- Try to make a little gap between the screen and the back cover. If needed, use the iSesamo Opening Tool.
- Once there's a gap, put your plastic opening tool between the screen and the back cover and then slowly slide to the bottom. This way you should be able to pry off the back cover without using too much force.

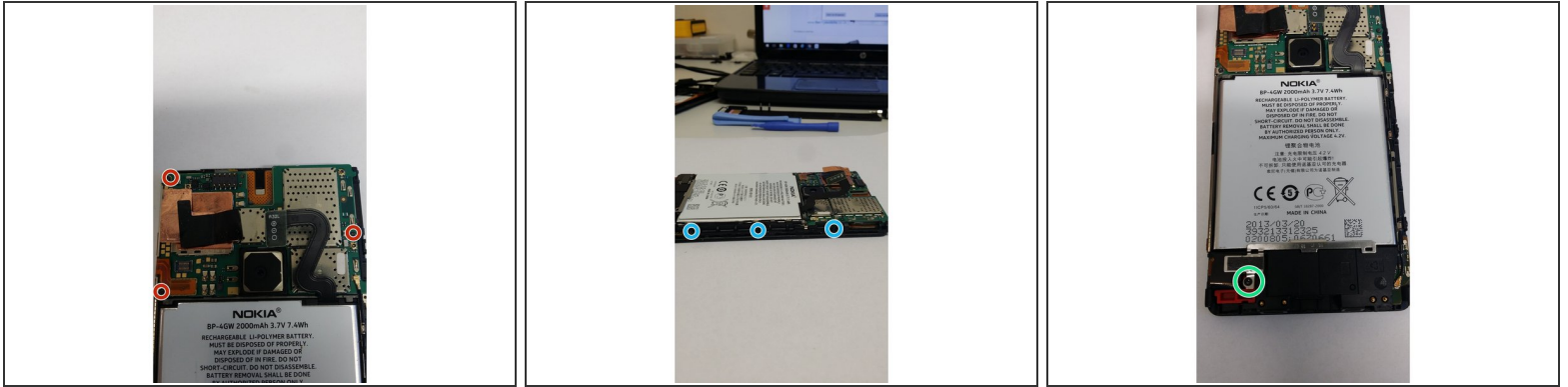
Step 4 — Connectors



⚠ Don't remove the back cover completely yet because it's still attached with a ribbon cable which you can easily rip apart.

- First remove the metal shield holding the cable in place, then disconnect the connector that attaches the back cover to the motherboard. Then remove the cable. This works best using a plastic tool or a spudger.
- Remove the copper tape and disconnect the battery.

Step 5 — Screws



i We're going to remove all screws in one step now. Please make sure to place them in a way that you know how to screw them back in place when reassembling the device. If you interchange the screws this might cause damage to your device.

- First, remove the 3 torx screws holding down the logic board. Keep these apart so as to prevent damage to the motherboard.
 - Remove all 3 torx screws at the right side of the device. (They're all the same size)
 - Remove the last torx screw located at the bottom left of the device.
- !** Once again, when you lay the screws aside, please make sure that you know how to screw them back in place.

Step 6



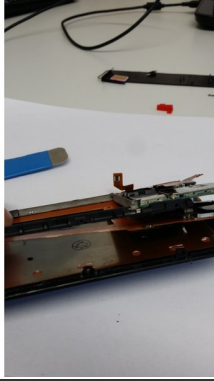
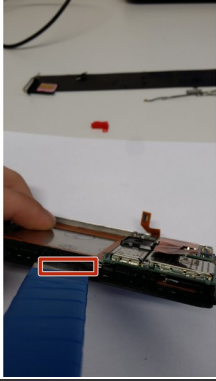
- Remove the metal plate at the bottom of the battery.
- Disconnect the volume / power switch.
- Carefully disconnect the RF cable from the motherboard.
- And disconnect the digitizer cable (Touch / LCD connector).


Step 7 — Touch connector




- Push up the touch array cable to disconnect it.
- ☞ Don't use brute force to remove it, just wiggle it loose with a plastic tool. If this is difficult, use a heathen (a hair dryer should also work).
- Disconnect the LCD connector using a plastic tool.

Step 8 — Remove the cover of the motherboard



 During this step, some components may fall out of their place, such as the speaker or SIM card cover, but you can easily put them back by slightly lifting up the logic board.

- Insert your iSesamo between the cover of the motherboard and the cover of the LCD which is very brittle.
- Unclick the cover of the motherboard (which should be very easy to do).
-  On picture 3 you can see that you also have to remove the camera AND the proximity sensor.

To reassemble the phone, follow the instructions in reverse order