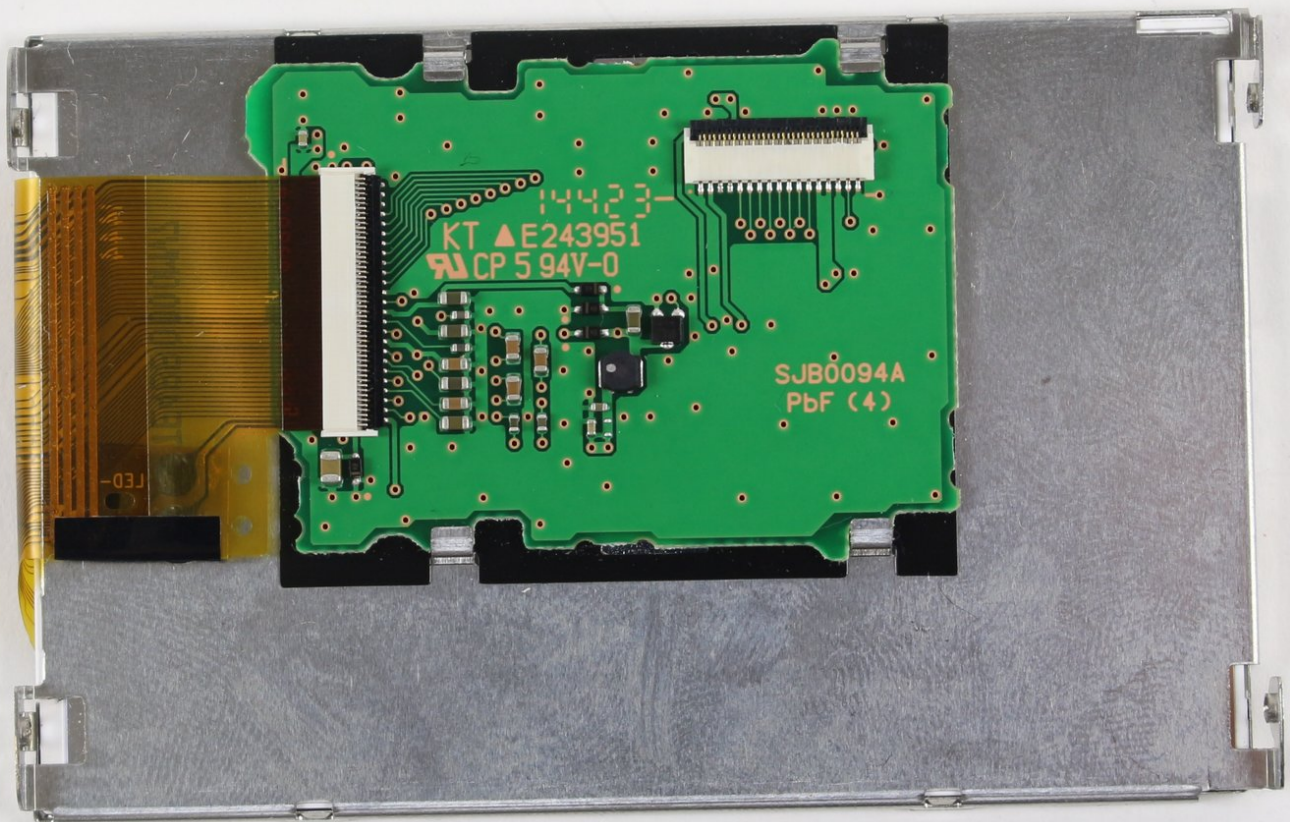




# Panasonic Lumix DMC-FZ1000 Screen Replacement

Replace your broken or faulty rotating monitor with a functional one.

Written By: Robseth Taas



## INTRODUCTION

If your camera's screen cracks or continuously stays black, you may need to replace it. In this guide you will unscrew several screws, pry open the plastic screen casing, and detach an electronic ZIF connector ribbon to remove your glass screen. See [this technique on disconnecting ZIF connectors](#) to better learn how to detach a ZIF connector ribbon.

---

### TOOLS:

- [Phillips #00 Screwdriver](#) (1)
  - [iFixit Opening Tools](#) (1)
  - [Spudger](#) (1)
-

## Step 1 — Screen



- Swing out the screen on the back of your camera by 90 degrees.
- Remove the two 2.2 mm Phillips #00 screws on the outside edge of the screen.

## Step 2



- Rotate the screen clockwise by 90 degrees, so that the glass faces the viewfinder.
- Remove the 4.1 mm Phillips #00 screw on the inside edge of the screen.

### Step 3



- Rotate the screen clockwise by another 180 degrees, so that the glass faces the bottom of the camera.
- Remove the second 4.1 mm Phillips #00 screw on the inside edge of the screen.



## Step 4



**⚠** In this step you will pry off the two sides of the screen's plastic casing. Do not yank off the side that holds the glass screen. If you do, you will tear the electronic ribbon attached to the screen and the screen axle.

- Use a plastic opening tool to pry open the plastic screen casing. It might be easiest to start prying near the screen mount, and then work your way around the casing.
- Hold on to the side that houses the glass screen. Set down the side that says LUMIX.

## Step 5



**⚠** Do not yank out the electronic ribbon attached to the screen and the screen mount, or you may damage it. To properly detach this ZIF connector ribbon, see [this technique on disconnecting ZIF connectors](#).

- Pull to disconnect from the screen the ZIF connector ribbon attached to the screen axle.
- Remove the screen and its casing from the screen axle.
- Pull out the screen from its plastic casing.

To reassemble your device, follow these instructions in reverse order.