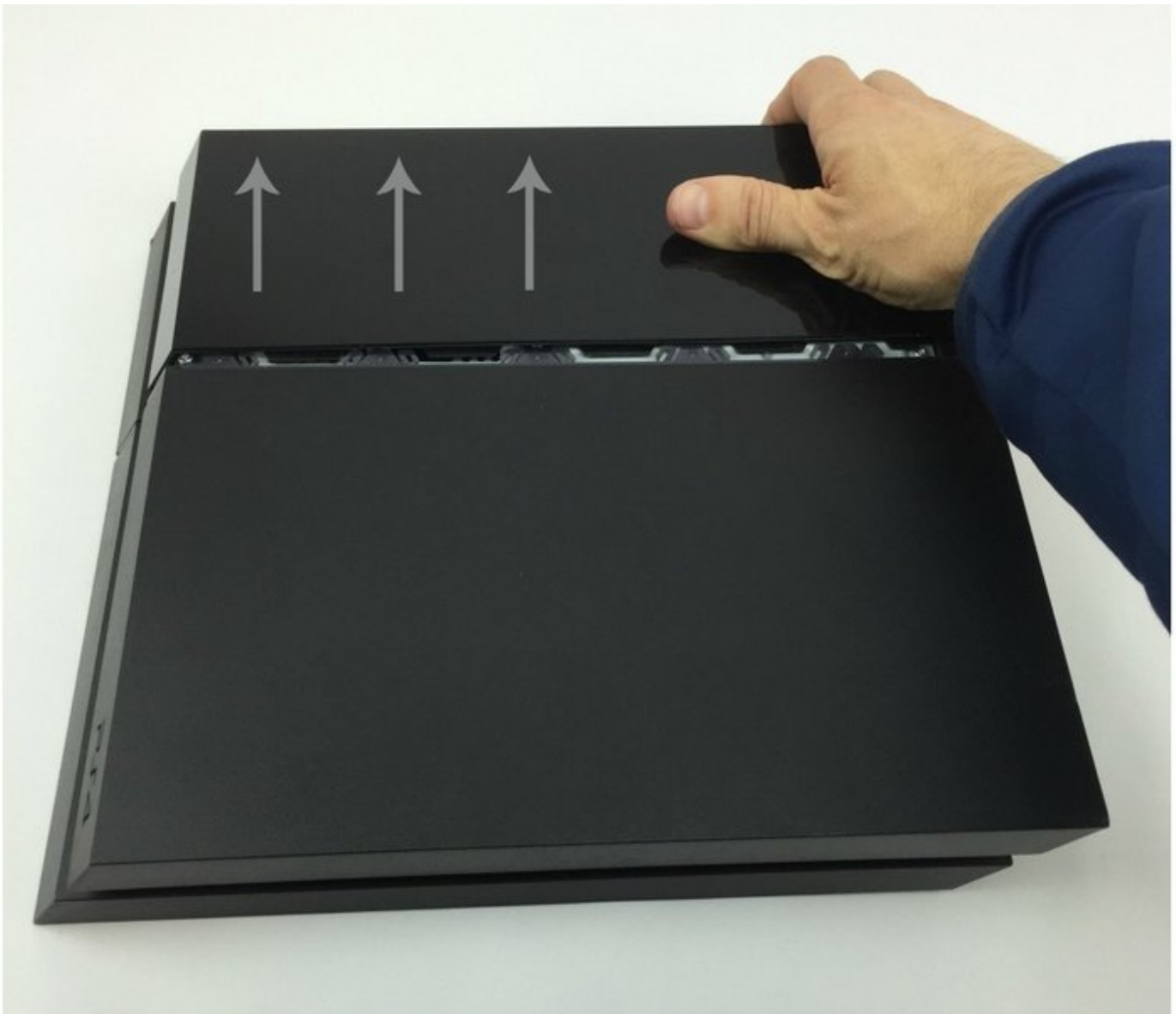




PlayStation 4 Turns On Then Back Off Repair

This repair is meant to fix the problem when the PS4 turns on then back off. It fixes approximately 70% of consoles that have not been opened before.

Written By: TronicsFix



INTRODUCTION

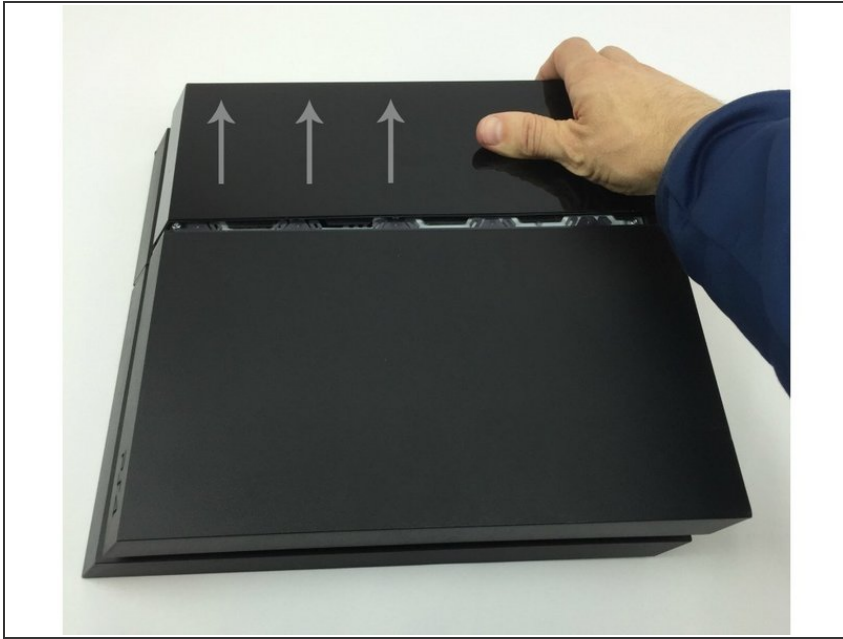
This is a fairly simple repair that most people should be able complete with no problems.

*You are using this guide at your own risk. TronicsFix take no responsibility and will not be held liable for any damages that may occur while using this guide.

TOOLS:

- [T8 Torx Screwdriver](#) (1)
 - [Phillips #1 Screwdriver](#) (1)
 - [6 Nylon Washers](#) (1)
-

Step 1 — Unplug & Remove Hard Drive Cover



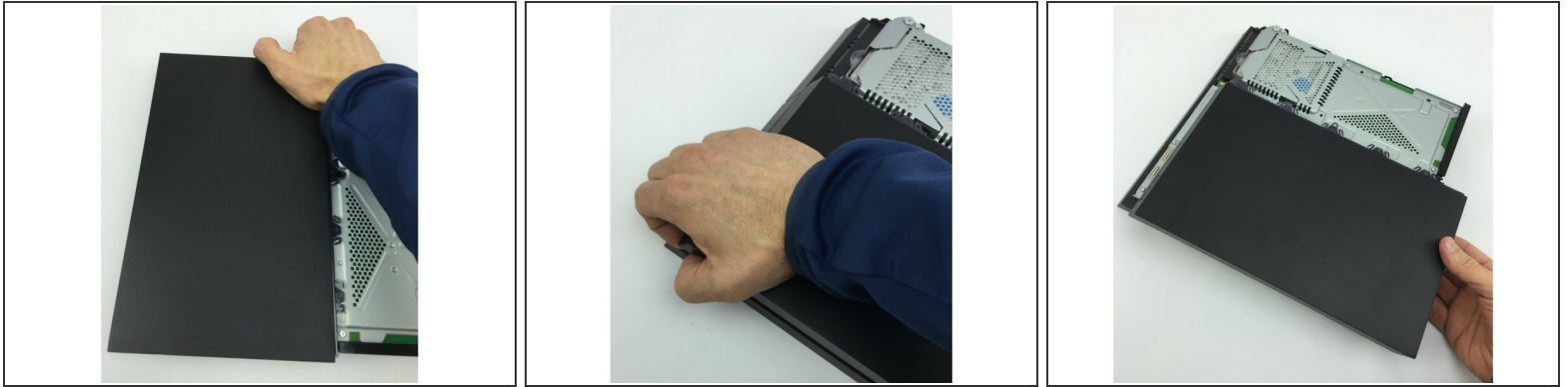
- Unplug PS4 from all cables
- Remove hard drive cover

Step 2 — Remove Top Cover Screws



- Remove two Torx T8 security screws from top cover.
- Remove warranty sticker (if it's still there) and remove black screw for the top case using Torx T8 security screw.

Step 3 — Remove Top Cover



- Pull up on front right edge of top cover.
- After right front is loose pull up on left front.
- Pull top cover back and set aside.

Step 4 — Remove APU/Heat Sink Clamp Screws



- Using a Phillips PH1, remove two APU/heat sink clamp screws.

Step 5 — Install Washers



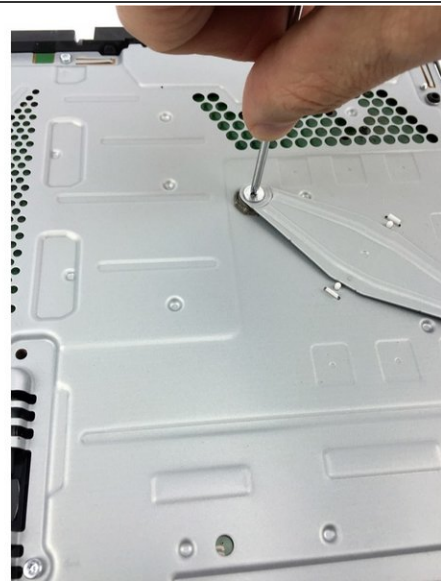
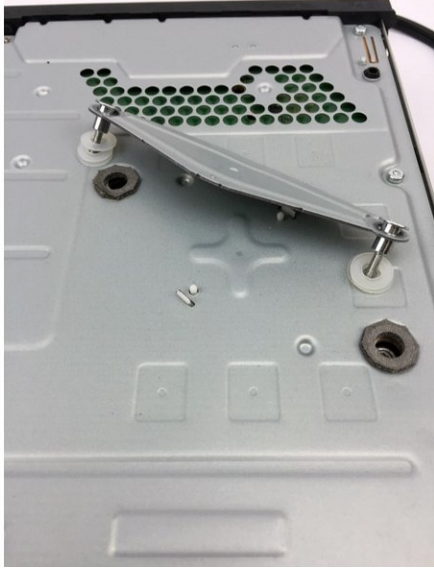
- Start by installing 2 washers under each screw.
- Install the clamp and screws and tighten screws.

Step 6 — Plug PS4 In and Press Power Button



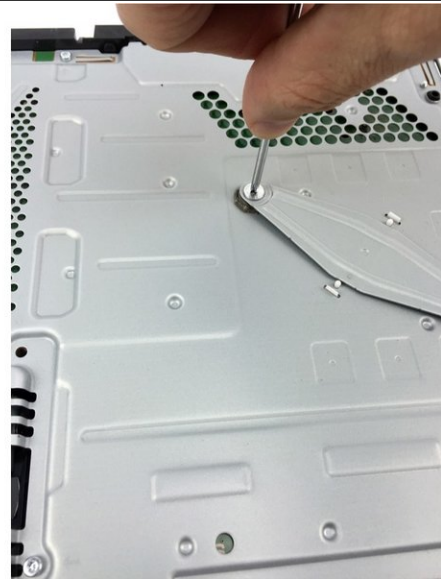
- Plug power cord into PS4.
- Touch copper pad on PS4 to power on.
- If PS4 powers on and stays on consider it fixed. If not, proceed to next step.

Step 7 — Install 3rd Washer Under Each Screw



- If the PS4 still does not work after adding two washers you will then remove the heat sink clamp and add a third washer under each heat sink clamp screw.

Step 8 — Power Console On



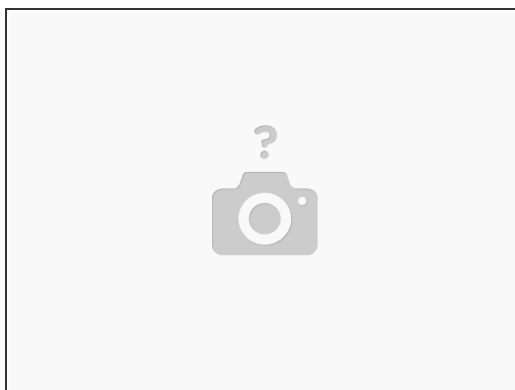
- After third washer has been installed and the screws have been tightened touch the power pad on the motherboard.
- If the PS4 makes no noise and shows no lights then the screws are too tight...loosen screws very slightly (about 1/8 turn) and try to power it on again. Do this until the console powers on.
- If the console still turns on and back off after these steps have been done then this fix will not work for your PS4.

Step 9 — IF ALL ELSE FAILS



- If your PS4 will not turn on (or turns on and right back off) after you have already had it working, try taking the cover back off and tighten the screws on the plate. If the screws are too tight the PS4 will not work at all. Slightly loosen until the system turns on. Be cautious about having the console plugged in. Possible but not recommended.

Step 10 — Overlooked Problems



- If you have your whole cover off of your PS4, and it is working properly, be sure to replace the cover. The cover is designed to distribute air from the fan and keep the system cool. It will cause it to turn off on its own if over heated.

To reassemble your device, follow these instructions in reverse order.

This document was last generated on 2019-07-10 05:10:23 PM.