



# Epson Stylus Photo 820 Ink Cartridges Replacement

This guide will show you how to replace your ink cartridges.

Written By: Alex Lin



---

## **INTRODUCTION**

Replacing your ink cartridges.

## Step 1 — Ink Cartridges



- When you are low on ink your green power light will be flashing and your error light will stay a solid red.

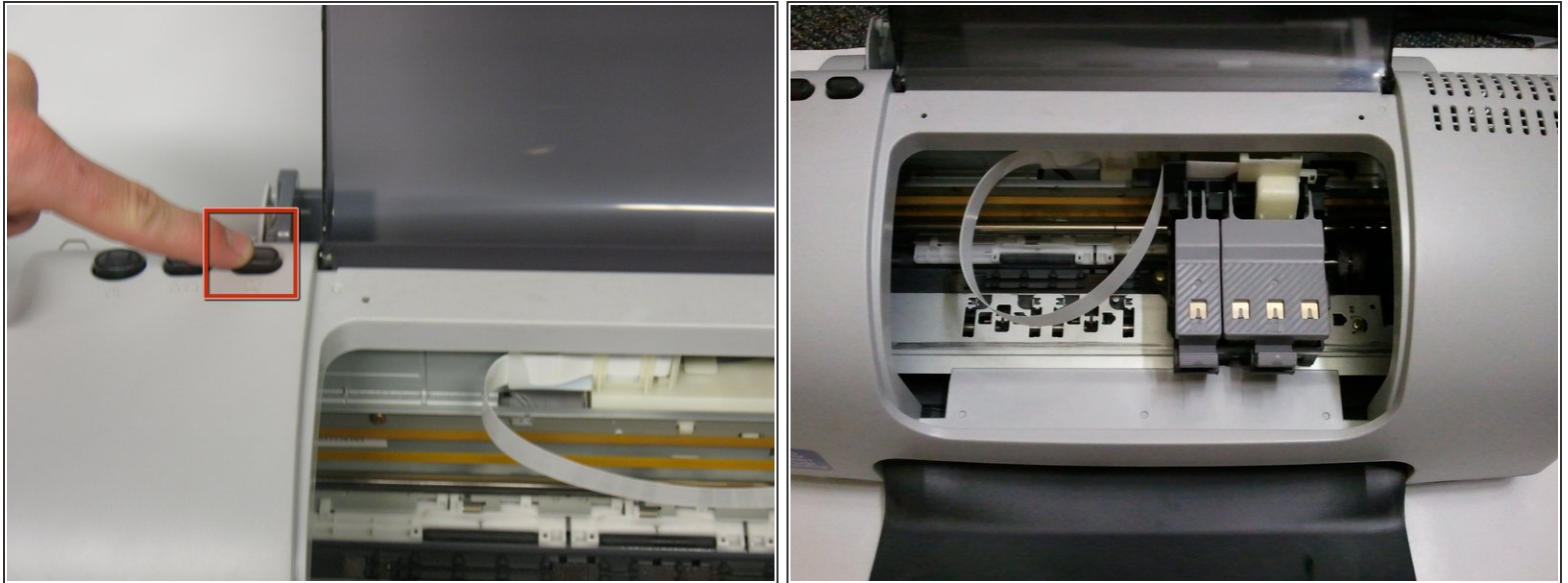
## Step 2



- Lift the printer window open by pulling up on the tab.
- Your printer should now be in the same state as shown in the second picture.

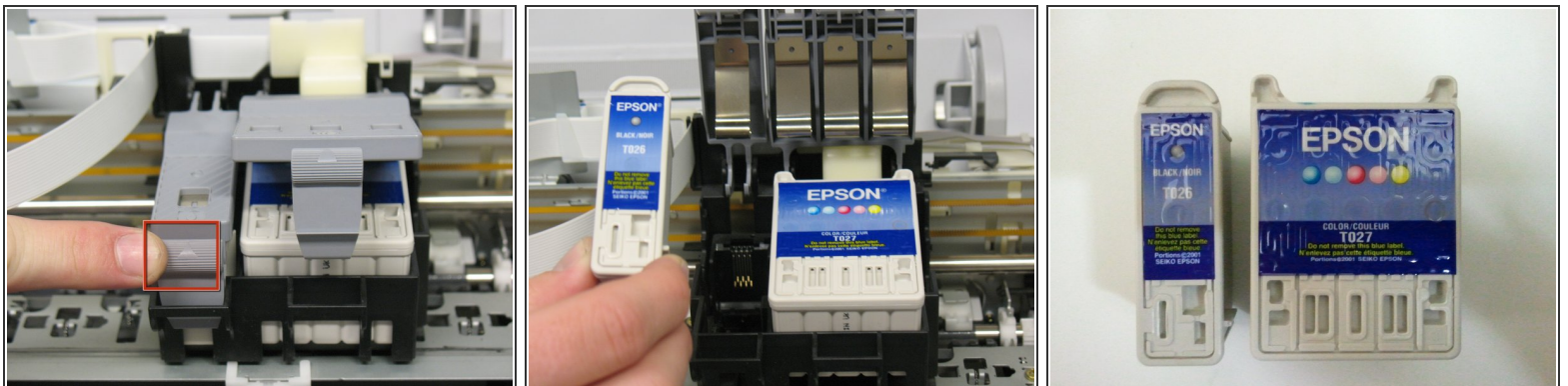


### Step 3



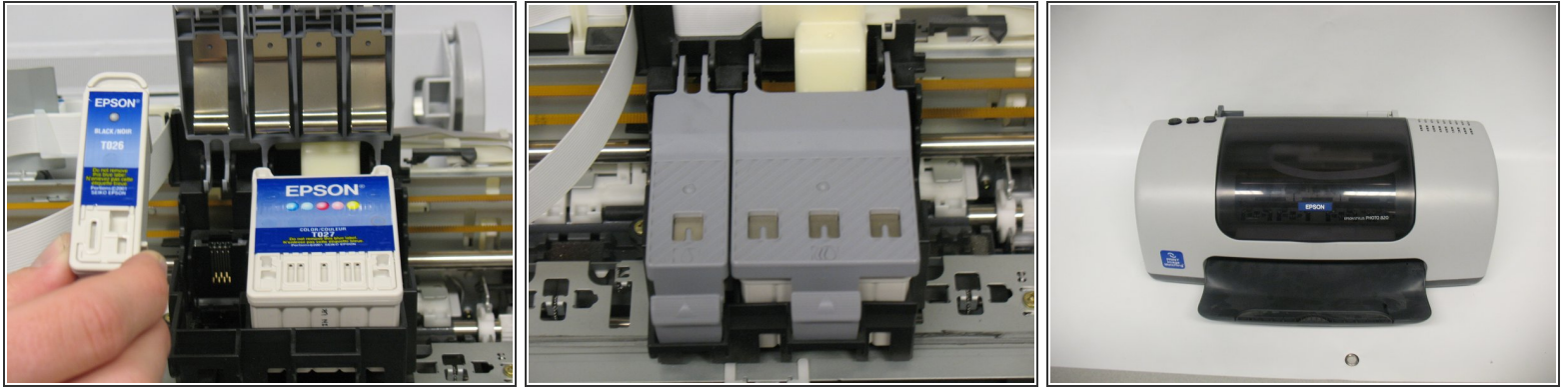
- Press the button on the far right to get your ink cartridge holders to slide over. (See the second picture)

### Step 4



- Press the tabs with the upward facing arrows to open the hatches as shown in the first picture.
- Remove the ink cartridge(s) that needs to be replaced. The black cartridge is on the left and the color cartridge is on the right.
- ☑ Make sure your cartridges are the same as the ones shown in the third picture. Non-Epson ink cartridges may not be recognized by your printer.

## Step 5



- Insert your new ink cartridges and close the hatches.
- Close your printer door and push the ink cartridge button on the far right and again.
- After your ink charges you're ready to print!