



Samsung Galaxy Tab 3 10.1 Charger Port Replacement

How to replace the Micro USB charger port

Written By: Harvey



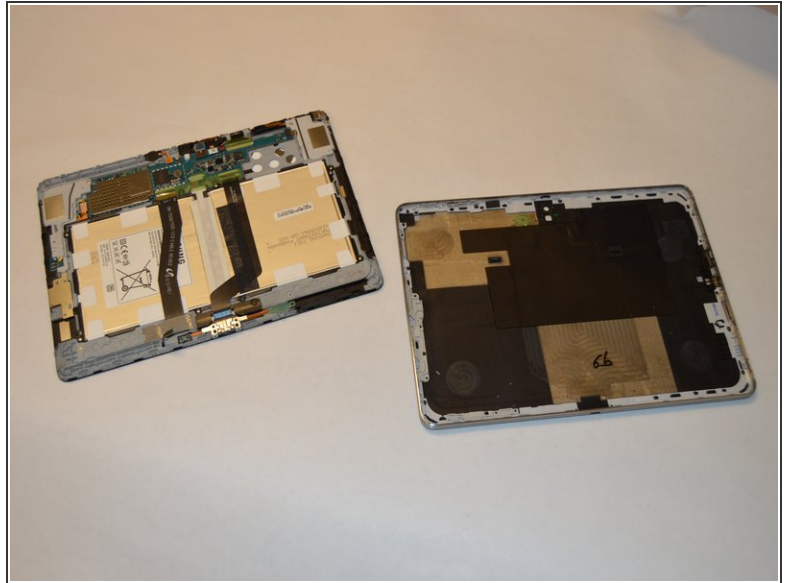
**TOOLS:**

- [iFixit Opening Tool](#) (1)
- [Phillips #00 Screwdriver](#) (1)

**PARTS:**

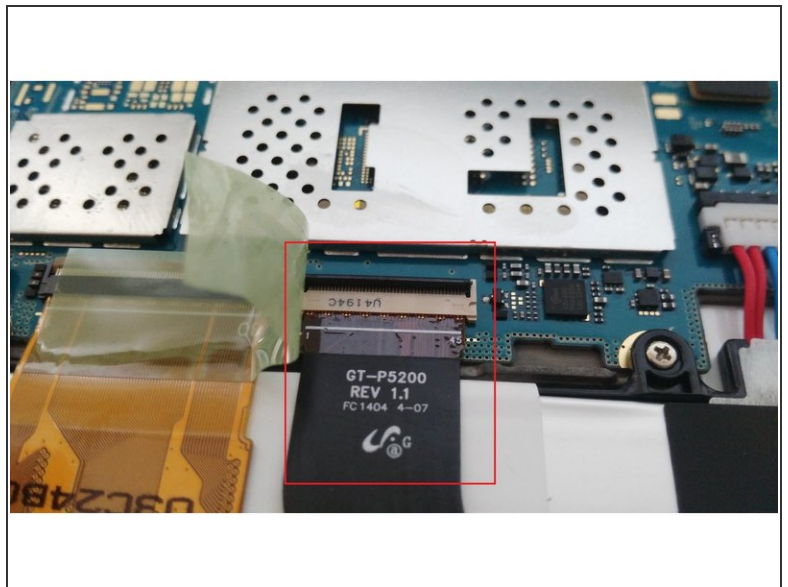
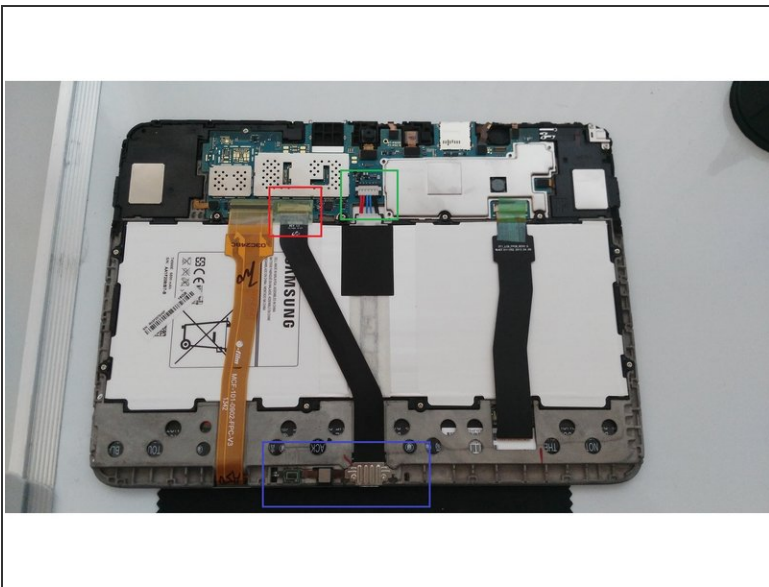
- [Galaxy Tab 3 10.1 USB Connector Assembly](#) (1)

Step 1 — Charger Port



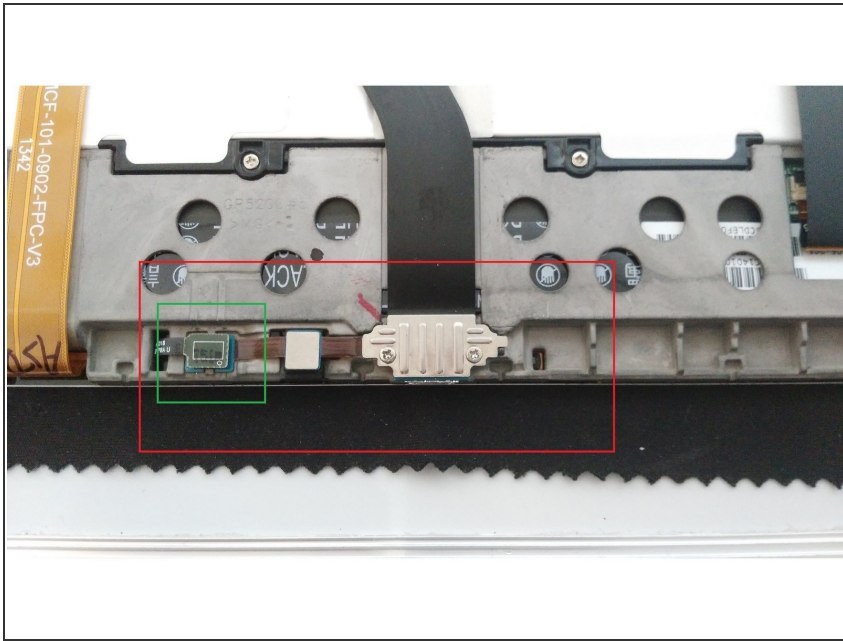
- Turn off the power to the device before removing the back case.
- Use a plastic tool to release the screen from the plastic case.

Step 2



- Disconnect the battery using a spudger. Pry up gently on both sides to release the connector (marked in green).
- Remove the tape covering the zif connector (marked in red)

Step 3



- Disconnect the cable on the left of the charger (marked in green).
- Remove the two philips screws that secure the charger port in place (marked in red).

To reassemble your device, follow these instructions in reverse order.

This document was last generated on 2019-07-11 12:49:03 PM.