



Black and Decker BDEDMT Power Cord Replacement

Use this guide to replace the single power cord that connects from the bottom of the drill to the wall outlet to supply the drill with power.

Written By: cayla dahl



INTRODUCTION

Before diving into the replacement of your drill power cord, it will be helpful to know that this is a fairly easy replacement with few steps and few tools. Remember to disconnect the power cord from a wall outlet before disconnecting any wires.

TOOLS:

- [Tweezers](#) (1)
 - [64 Bit Driver Kit](#) (1)
-

Step 1 — Detach Matrix Attachment



 Remember to disconnect the device from all external power sources.

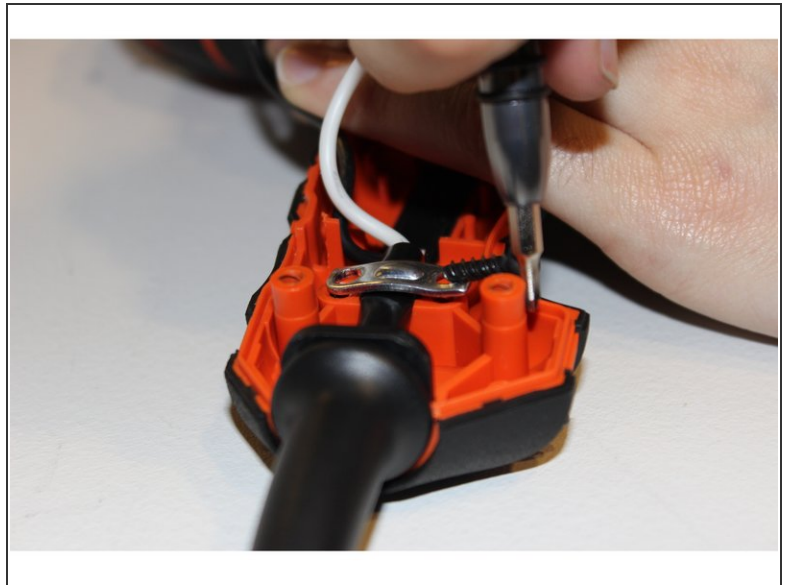
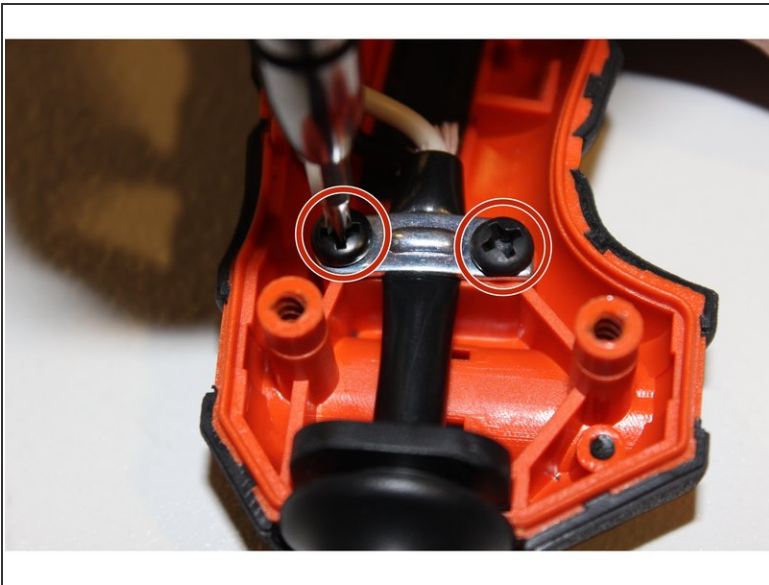
- To detach the matrix attachment piece, press down on the attachment release button located at the top of the device.
- Leaving your finger pressed down on the button, simply pull on the attachment to release it.

Step 2 — Remove Mounting Hardware



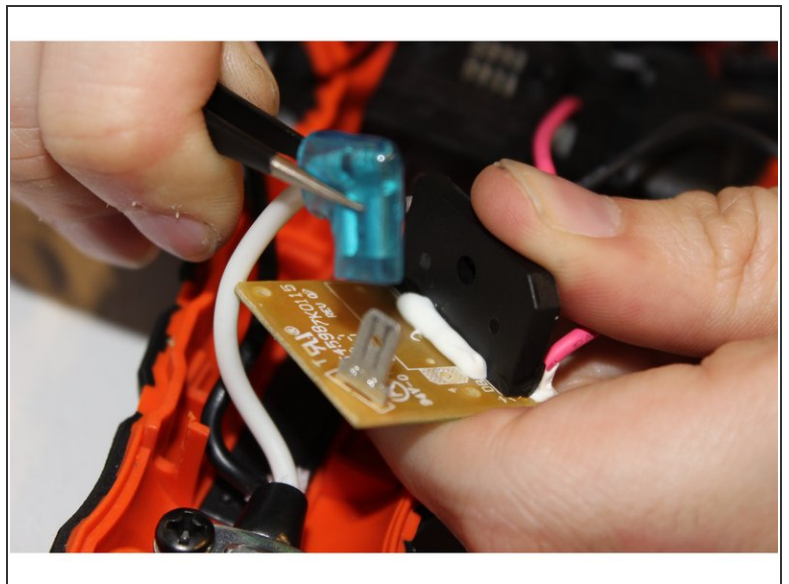
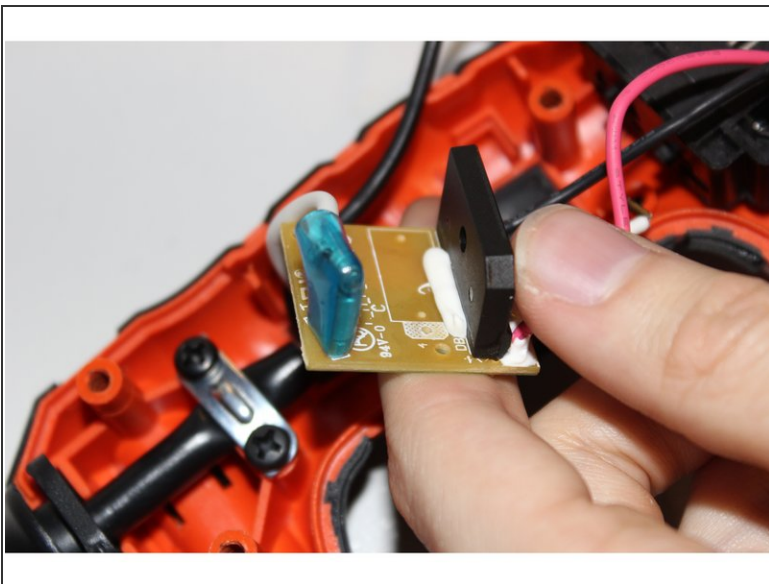
- Using a JIS 1 screwdriver, unscrew seven 19mm outer screws located on the armature.
- Using the same screwdriver, unscrew the 12mm outer screw located on the armature.

Step 3 — Mounting Bracket



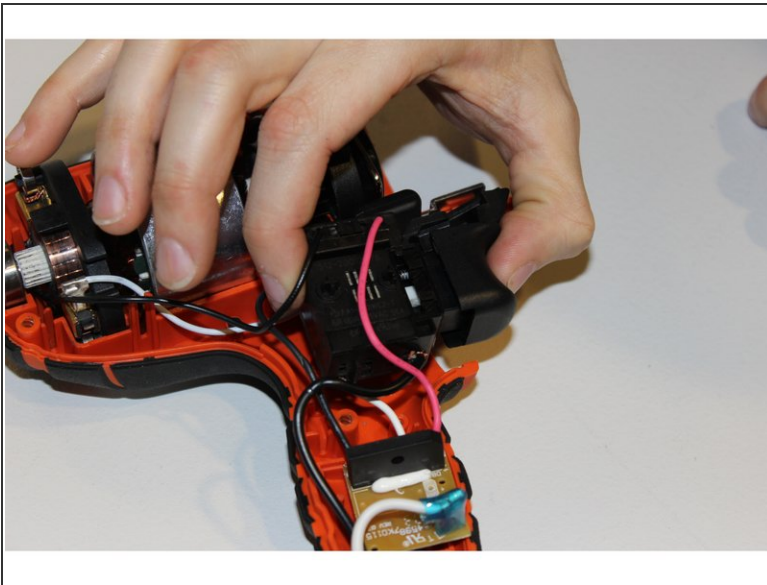
- Using the T-handle screwdriver with the JIS 1 bit, unscrew the two lower black 12mm screws.

Step 4



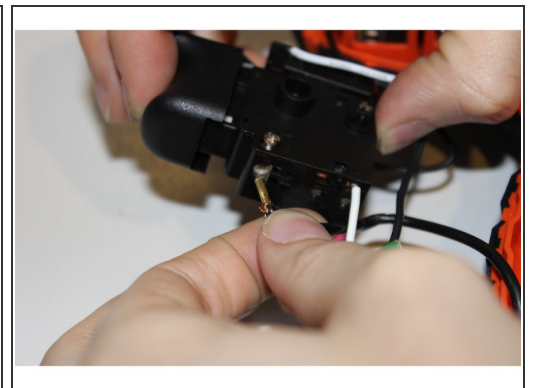
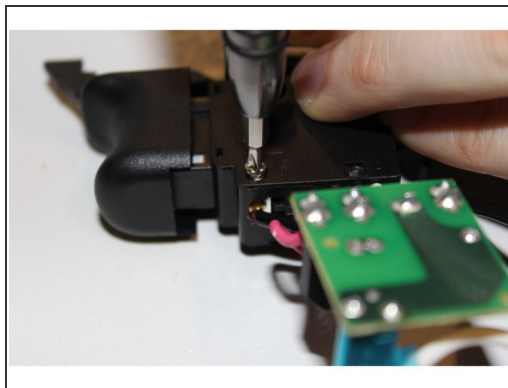
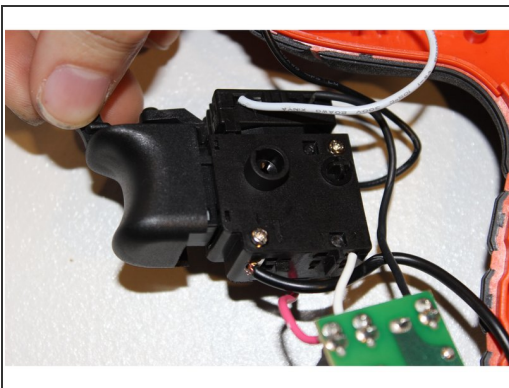
- There will be a white cord that runs from the power cord base to the circuit board located slightly above.
- Use the tweezers to detach the entire white cord and blue connection piece as a whole from the circuit board.

Step 5 — Trigger Assembly



- Physically pull up on the trigger device and remove it from the armature.
- Flip trigger device over onto its back.

Step 6 — Wire Removal



- There is a screw labeled 3 located on the bottom left of the back of the trigger device.
- Use a JIS 0 screwdriver to remove screw.
- Gently tug on the black wire to pull the wire out of the device.
- ⓘ Now the power cord will be completely removed from the device.

To reassemble your device, follow these instructions in reverse order.