



# Black and Decker BDEDMT Directional Switch Replacement

In this guide we will explain how to remove the directional switch. The directional switch controls the drills capability of powering in reverse or forward.

Written By: Tyler Yurina



---

## INTRODUCTION

This guide will explain step by step how to remove the directional switch within the device. The switch could become damaged because of its plastic design. There guide is not very challenging just be aware that everything must be placed in there original locations.

---

### TOOLS:

- [64 Bit Driver Kit](#) (1)
-

## Step 1 — Detach Matrix Attachment



 Remember to disconnect the device from all external power sources.

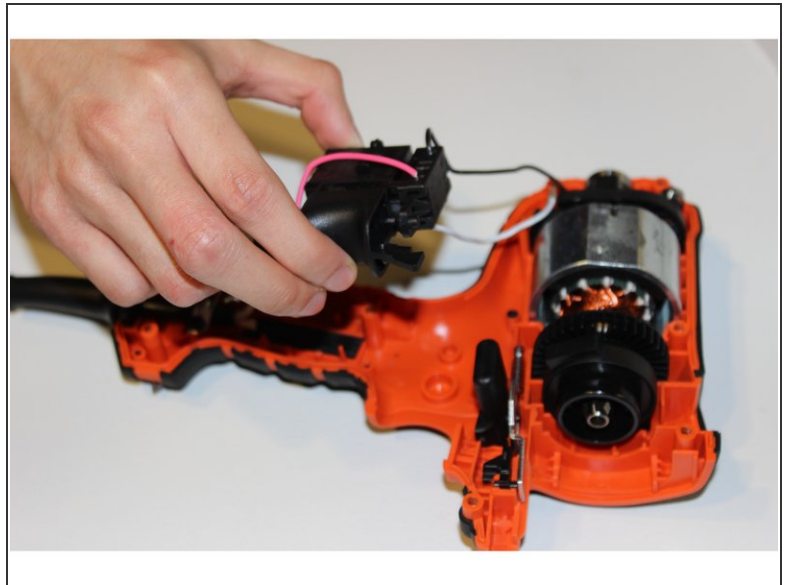
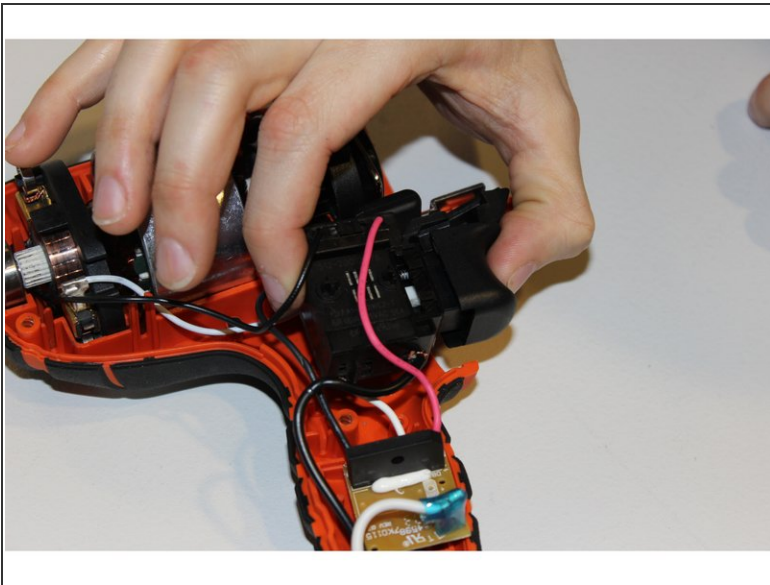
- To detach the matrix attachment piece, press down on the attachment release button located at the top of the device.
- Leaving your finger pressed down on the button, simply pull on the attachment to release it.

## Step 2 — Remove Mounting Hardware



- Using a JIS 1 screwdriver, unscrew seven 19mm outer screws located on the armature.
- Using the same screwdriver, unscrew the 12mm outer screw located on the armature.

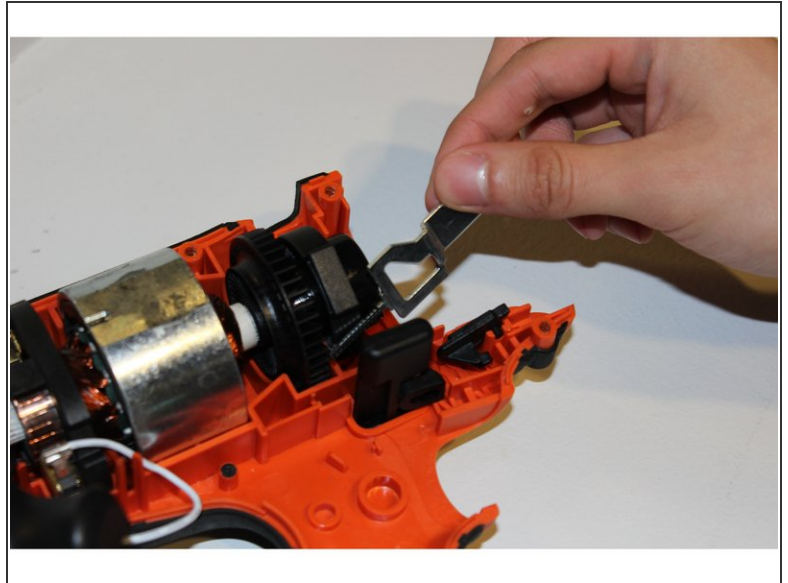
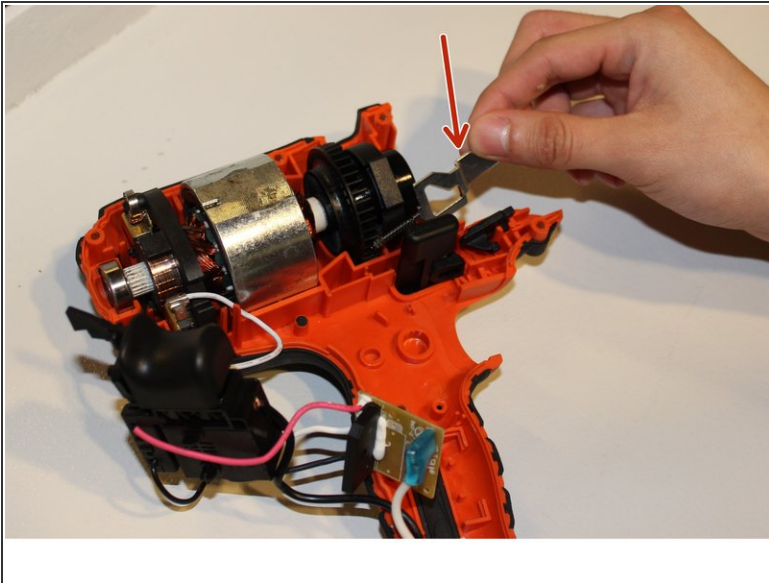
### Step 3 — Directional Switch



- Gently pull up on the trigger module.
- ⓘ Be sure to not loosen or disturb any wiring.

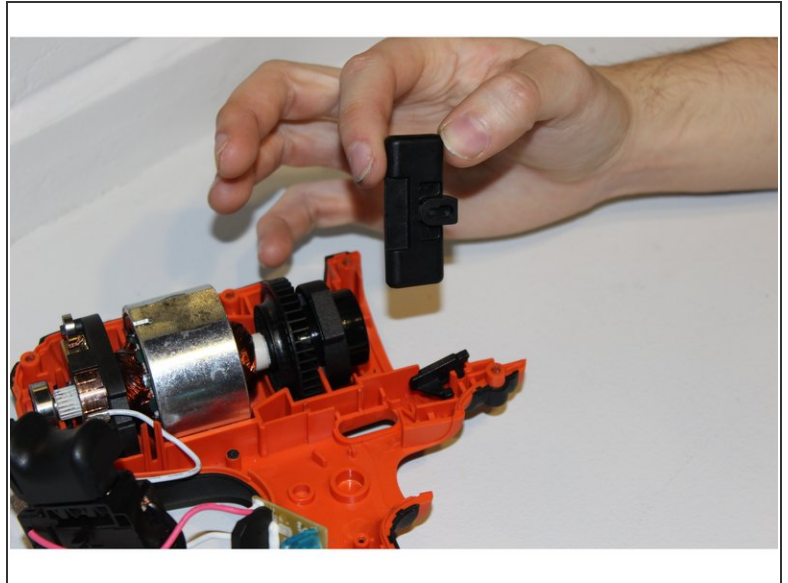
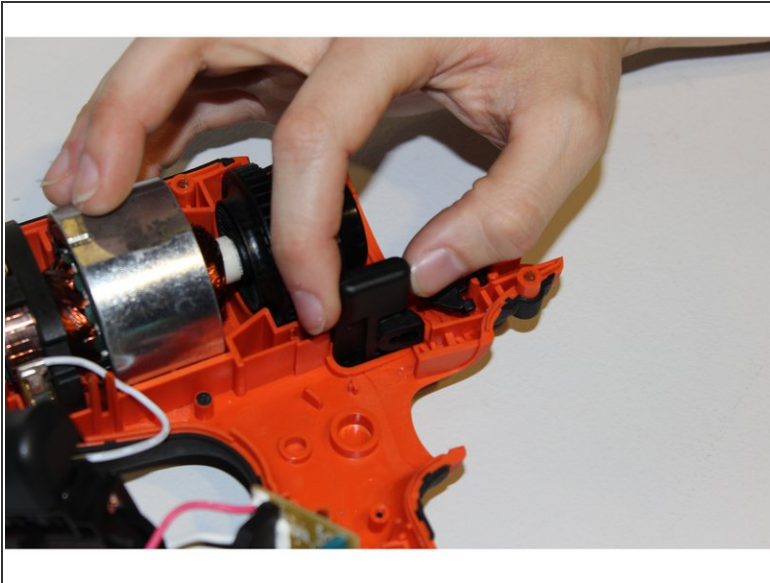


## Step 4



- With the trigger module out of the way you will then remove the metal piece that is located behind the directional switch and has the spring attached to it.
- Do this by simply pulling up on the metal with your fingers or your tweezers.
- ⓘ Make sure to not loosen or remove the black trigger stopper.

## Step 5



- The black directional switch can now be freely removed.

To reassemble your device, follow these instructions in reverse order.