



How to clean the Epson Stylus Photo 820 print rollers

Dirty prints can be caused by dust built up inside your printer. This guide will show you how to easily fix this problem with a simple cleaning.

Written By: Alex Lin



INTRODUCTION

Cleaning the inside of your printer with a Q-tip.

TOOLS:

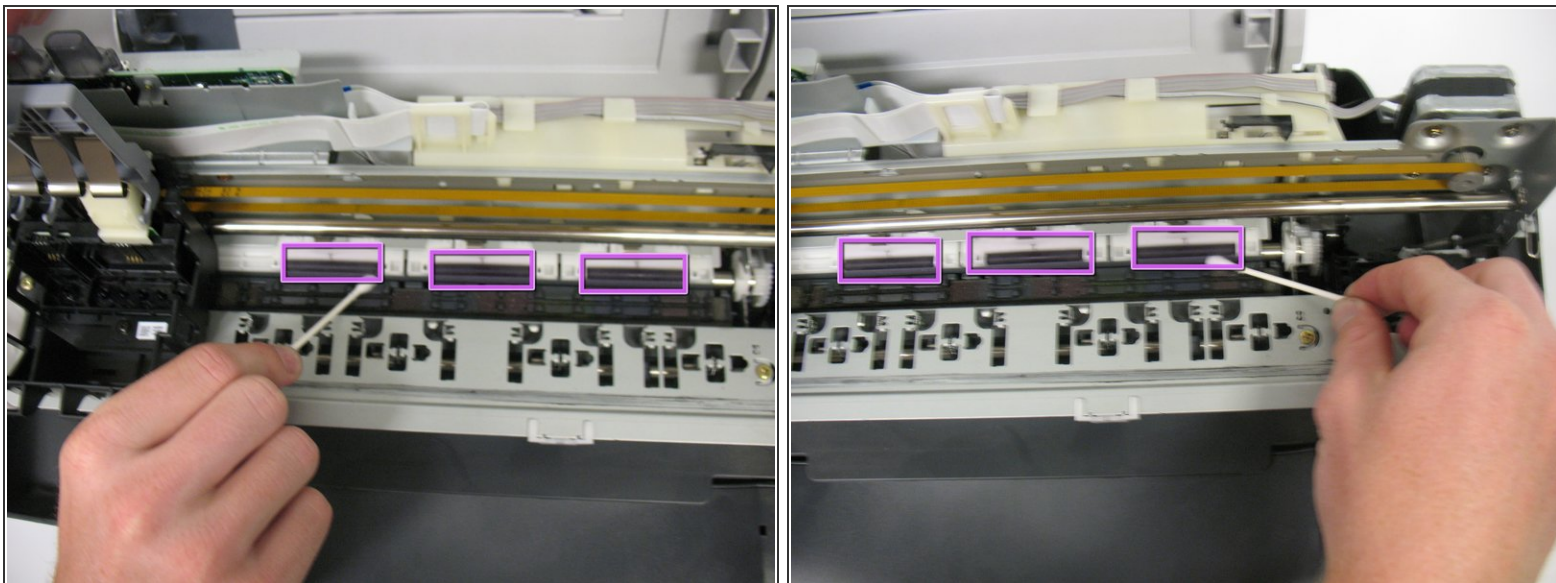
- [Q-Tips](#) (1)
-

Step 1 — How to clean the Epson Stylus Photo 820 print rollers



- Safely unplug your printer.
- Pull up on the tab to open the printer window.
- Note: If you wish to clean more parts on the inside of your printer follow the [guide to remove the top cover](#). This will give you access to more parts. After removing the top cover follow the next steps.

Step 2



- Apply the Q-tip to the three black, cylindrical rollers shown in the picture. Clean them as much as you see fit.
 - If you notice a lot of dust on other parts of the printer you should clean those as well. For parts with a lot of surface area a damp cloth may be more useful.
- i** Note: In the pictures, the top cover of the printer is removed.

Step 3



- Close the printer door (or reattach the top cover if removed), and power on your printer.

This document was last generated on 2019-07-18 11:25:35 PM.