



Motorola Droid Turbo SIM Card Tray/Volume Button Rocker Replacement

Replace the SIM card tray/volume button rocker on your Motorola Droid Turbo.

Written By: Luis Arangu



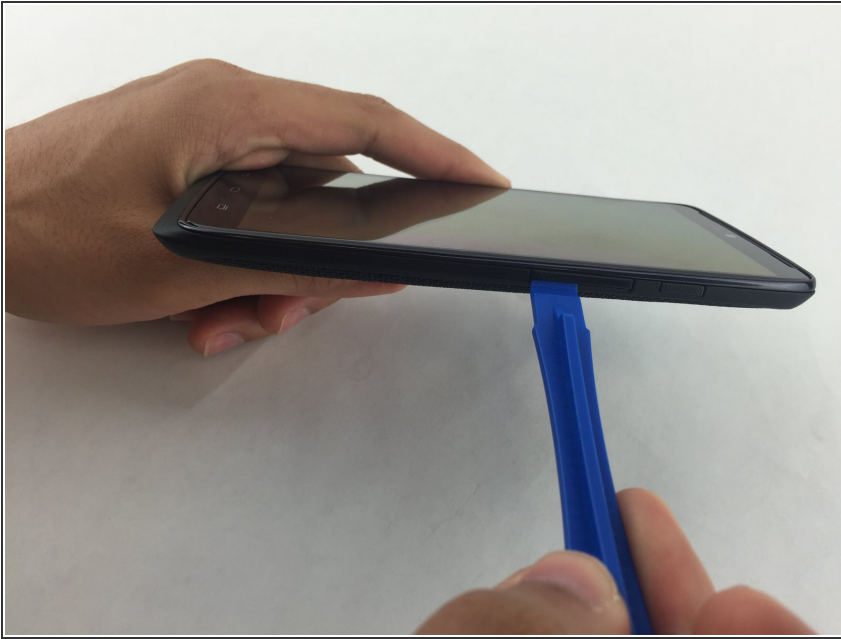
INTRODUCTION

Use this guide to replace the SIM card tray/volume button rocker on your Motorola Droid Turbo.

TOOLS:

- [iFixit Opening Tools](#) (1)
-

Step 1 — SIM Card Tray/Volume Button Rocker



- Remove the sim card frame from the port with a plastic opening tool.
- ⓘ The sim card port is located on the right side of your device.

Step 2



- Pull inlet toward you to remove it. As you see, it comes out completely.

To reassemble your device, follow these instructions in reverse order.

This document was last generated on 2019-07-19 02:42:28 PM.