



LG Tribute Rear-Facing Camera Replacement

This guide will help you replace the front facing camera.

Written By: Gustav Wolter



INTRODUCTION

The rear facing camera on the LG Tribute is a fairly simple component to replace. The phone takes only a couple minutes to break down, and the camera can be replaced without any soldering.

TOOLS:

- [iFixit Opening Tools](#) (1)
- [Phillips #000 Screwdriver](#) (1)
- [iFixit Opening Picks set of 6](#) (1)

PARTS:

- [LG Tribute Rear-Facing Camera](#) (1)

Step 1 — Battery



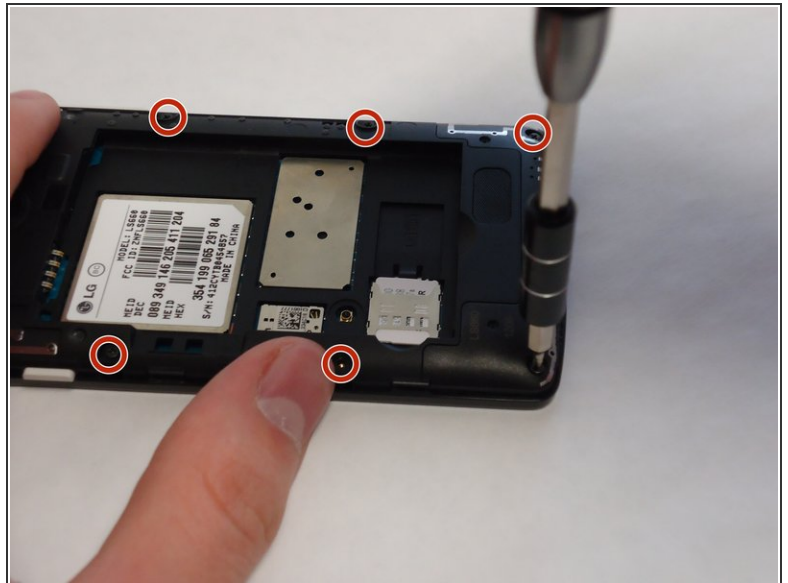
- Use the plastic opening tool to pry off the back cover.

Step 2



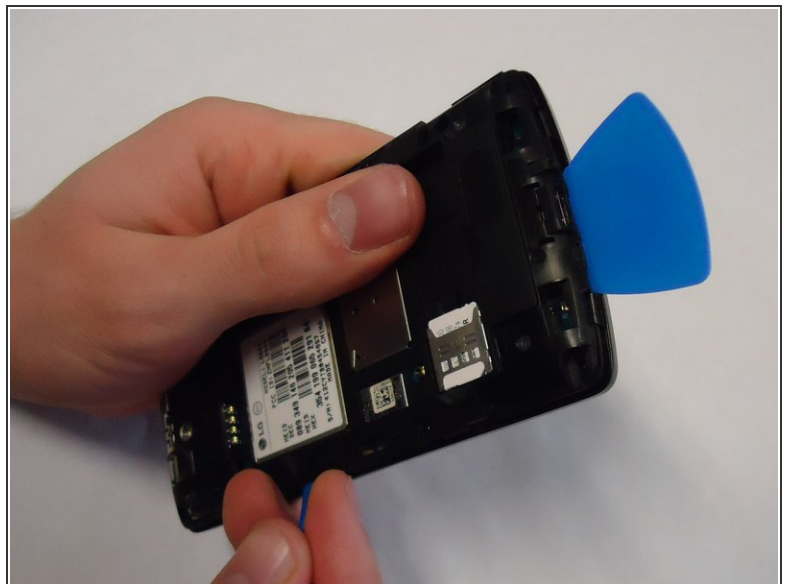
- Lift the battery out of place.
- ★ When replacing the battery, the (+) and (-) symbols must match up with the phone's charging nodes.

Step 3 — Mid-panel



- Remove eight 4mm screws using a Phillips head 000 screwdriver (PH000).

Step 4



- Use a plastic opening tool to loosen the tabs around the edge of the phone.
- ⓘ Inserting a thin piece of plastic will help prevent opened tabs from locking back into place.
- ⚠ This step can be frustrating, but requires patience. Avoid the temptation to pry the panel loose. Using excessive force may break the delicate tabs.

Step 5 — Rear Facing Camera



- Disconnect the rear facing camera from the motherboard using a plastic opening tool.
- Lift the rear facing camera out of its housing.

To reassemble your device, follow these instructions in reverse order.

This document was last generated on 2019-07-15 03:21:07 PM.