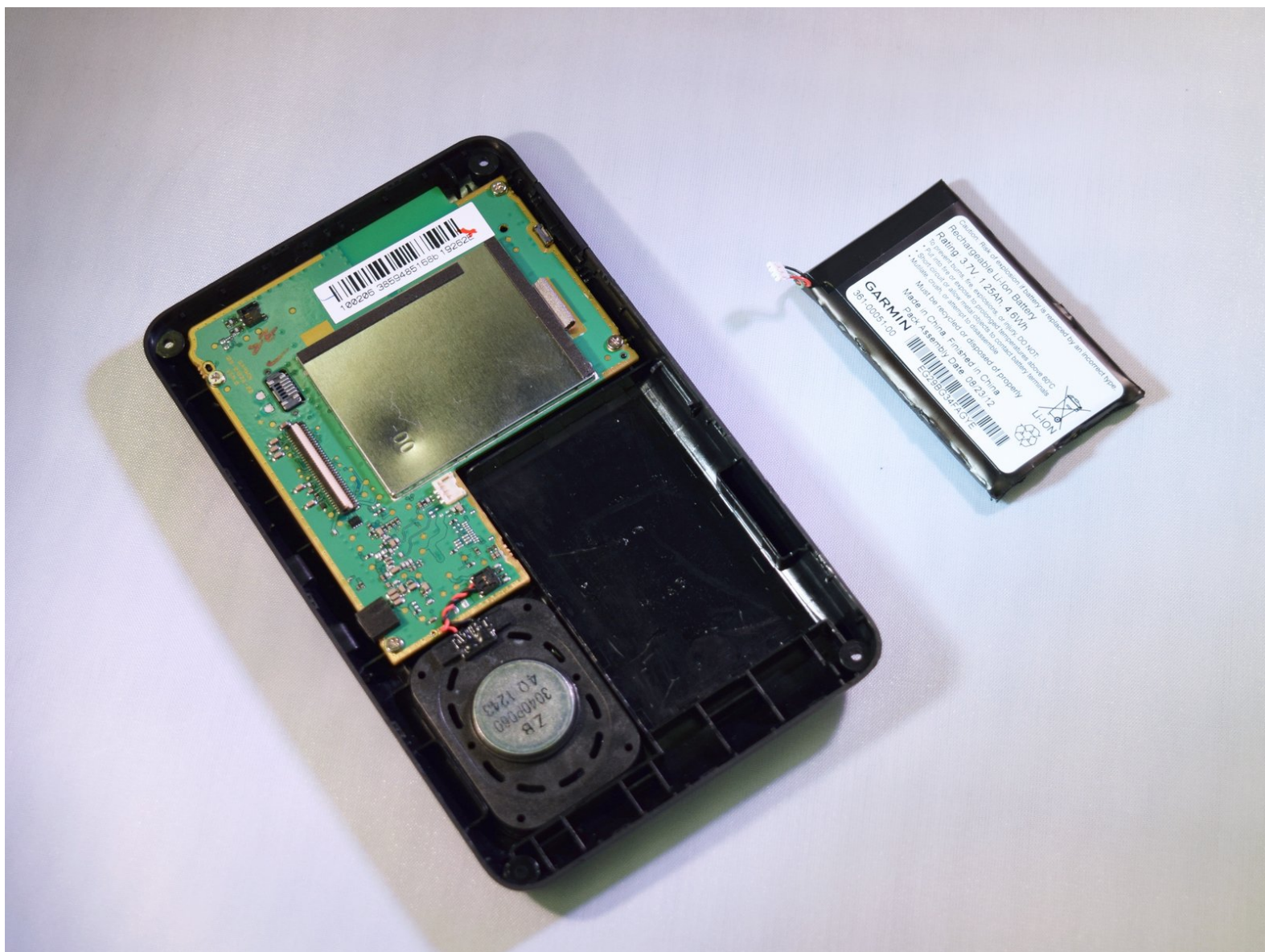




Garmin Nuvi 2595LMT Battery Replacement

This guide will walk you through replacing the battery of your Garmin Nuvi 2595LMT.

Written By: Taylor DeWitt



INTRODUCTION

Use this guide to replace the battery of your Garmin Nuvi 2595LMT GPS.



TOOLS:

- [T5 Torx Screwdriver](#) (1)
- [iFixit Pro Tech Toolkit](#) (1)
- [Spudger](#) (1)



PARTS:

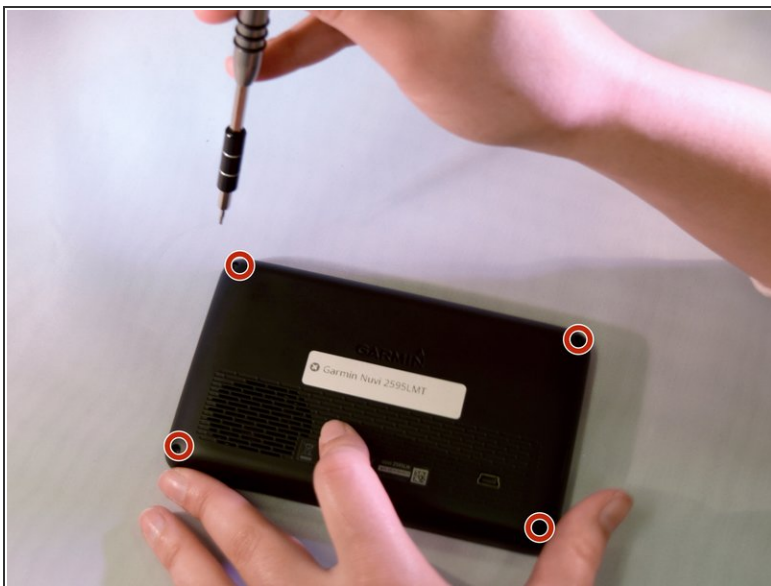
- [Garmin Nuvi 2595LMT Replacement Battery](#) (1)

Step 1 — Garmin Nuvi 2595LMT Back Cover Replacement



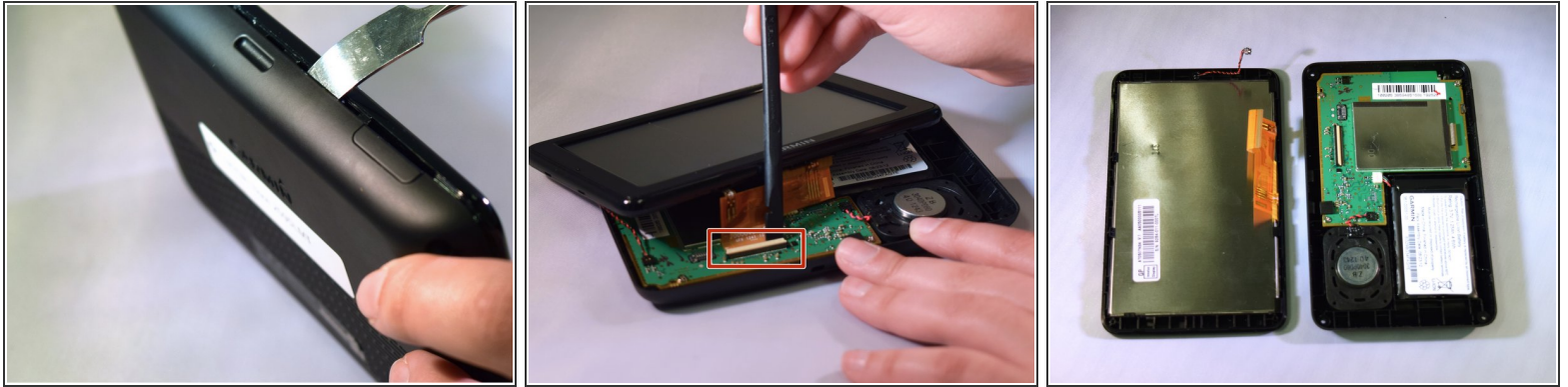
- Place the device on the workspace so the screen is facing downward.

Step 2



- Using the t5 screwdriver from the iFixit Pro Tool Kit, remove all four 5.6mm screws placing them safely on the table.

Step 3



- Grab a spudger from tool kit.
- Pry open sides of Nuvi gently with spudger (do not rip apart).
- Use plastic opening tool to pry ribbon slowly from white plastic bar.
- Separate the two pieces and place them on the table

Step 4 — Battery



- Use a nylon spudger to remove battery (do not yank out) (the battery may be glued down, if so pry around the sides of the battery gently and pop out).
- Carefully pull wire connected to battery from circuit board.
- Place the battery on table.
- Replace old battery with a new one.

To reassemble your device, follow these instructions in reverse order.