



HP Pavillion dm4t-2100 Memory Card Replacement

This guide will go through all the necessary steps in order to remove the memory card.

Written By: Brandon Snyder



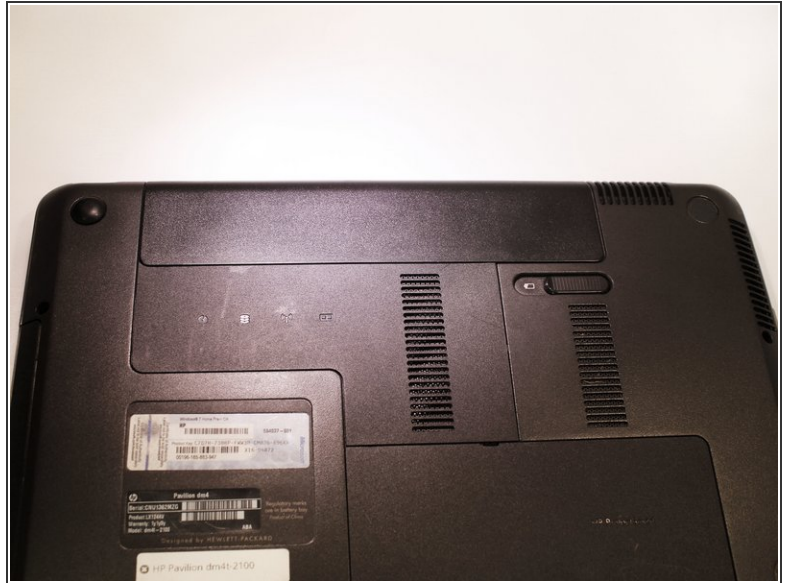
INTRODUCTION

To detach the memory you will need a Phillips PH1 screwdriver. Also remember to be gentle with the screws because not all of them will completely detach from the plastic.

TOOLS:

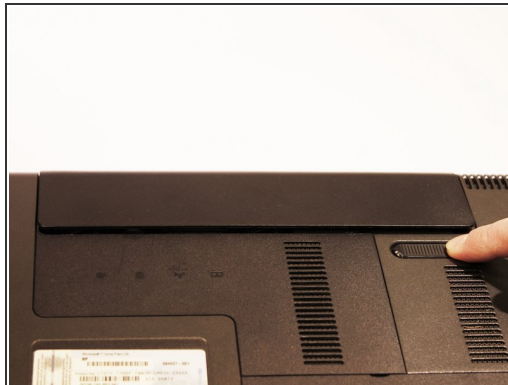
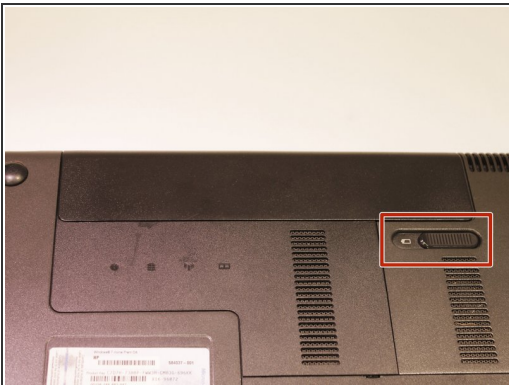
- [Phillips #1 Screwdriver](#) (1)
-

Step 1 — Battery



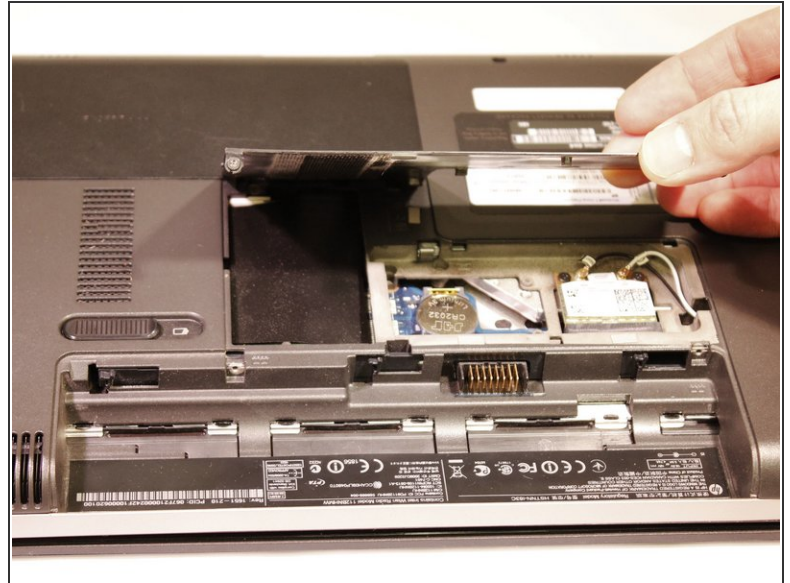
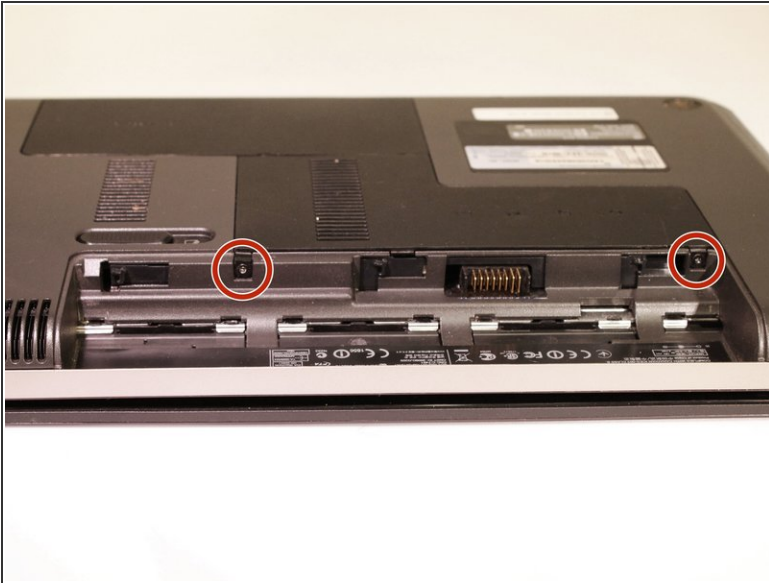
- Shut down the computer.
 - ⚠ Shutting down the computer by holding power button can cause damage to computer.
- Turn computer upside down so the base is facing upward.

Step 2



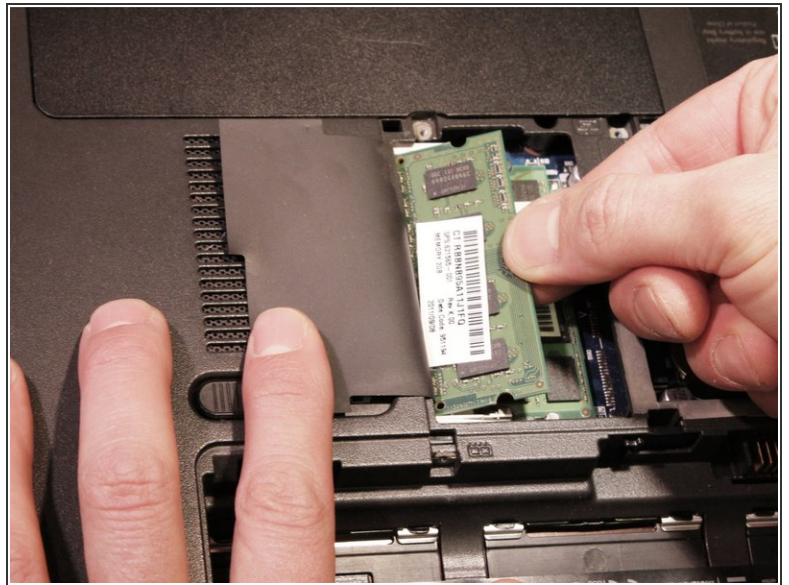
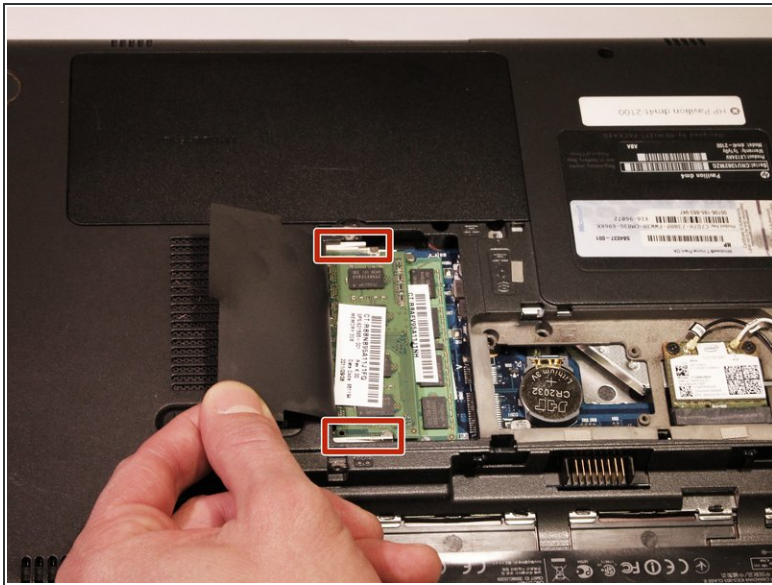
- Slide latch next to battery icon until battery pops up.
- Pull the battery away from the computer until completely detached.

Step 3 — Memory Card



- Loosen two 5mm Phillips #1 screws securing plastic cover, until cover is detachable.
- Slide cover toward empty battery area and remove it.

Step 4



- Lift black cover overlaying memory chip.
- Spread the tabs on each side of the memory slot to release the module.
- Remove memory by pulling the memory out at an angle, until completely detached.

To reassemble your device, follow these instructions in reverse order.