



Magellan RoadMate 2120T-LM Battery Replacement

Instructions for the replacement of the internal battery for the Magellan RoadMate 2120T-LM.

Written By: John Doe



INTRODUCTION

This guide will walk through the steps of replacing the internal battery of a Magellan RoadMate 2120T-LM. This guide is also a prerequisite for replacing every other component of the device.

TOOLS:

- [Metal Spudger](#) (1)
- [Heavy-Duty Spudger](#) (1)
- [Phillips #1 Screwdriver](#) (1)

PARTS:

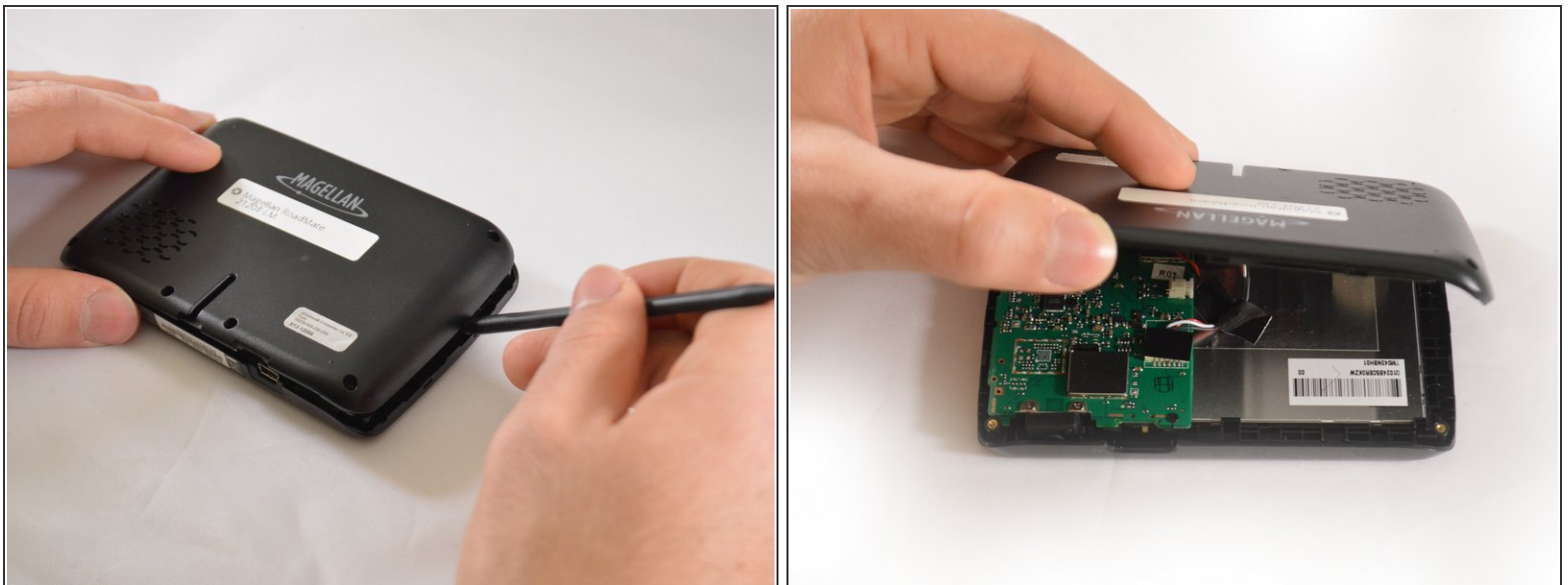
- [New battery](#) (1)
-

Step 1 — Battery



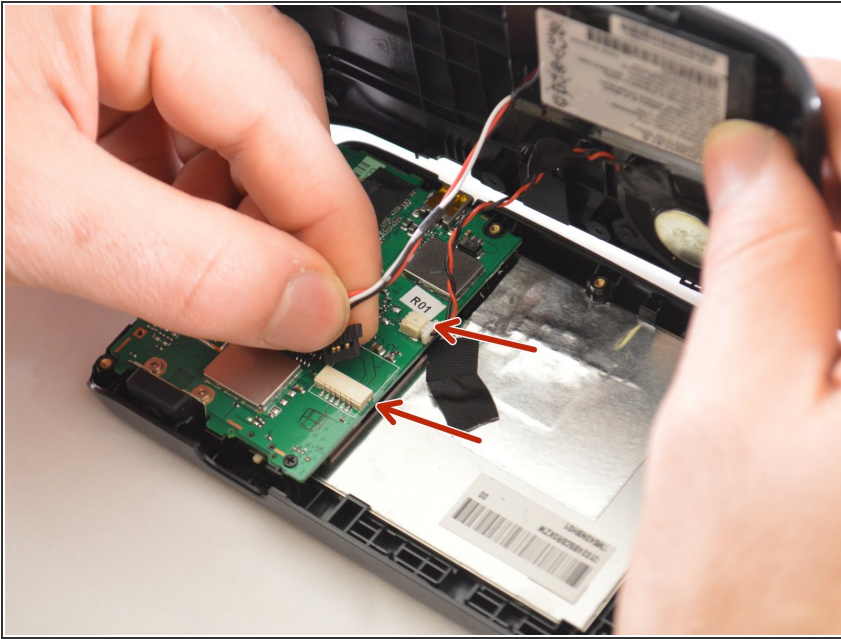
- Turn the GPS over on its backside and remove the six 3 mm Phillips #1 screws.

Step 2



- Pry up on back panel with black spudger

Step 3



- Disconnect battery and speaker cables from the motherboard at indicated places.

Step 4



- Use a spudger to remove the battery from the back panel.
- ⚠ If at all possible, please try to use a regular nylon spudger before resorting to a metal spudger. Metal spudgers are much sharper, and have the potential to accidentally pierce the battery.
- ⓘ There is a strong adhesive holding the battery to the back panel.
- ⓘ This step is not a prerequisite for replacement of other components.

To reassemble your device, follow these instructions in reverse order.