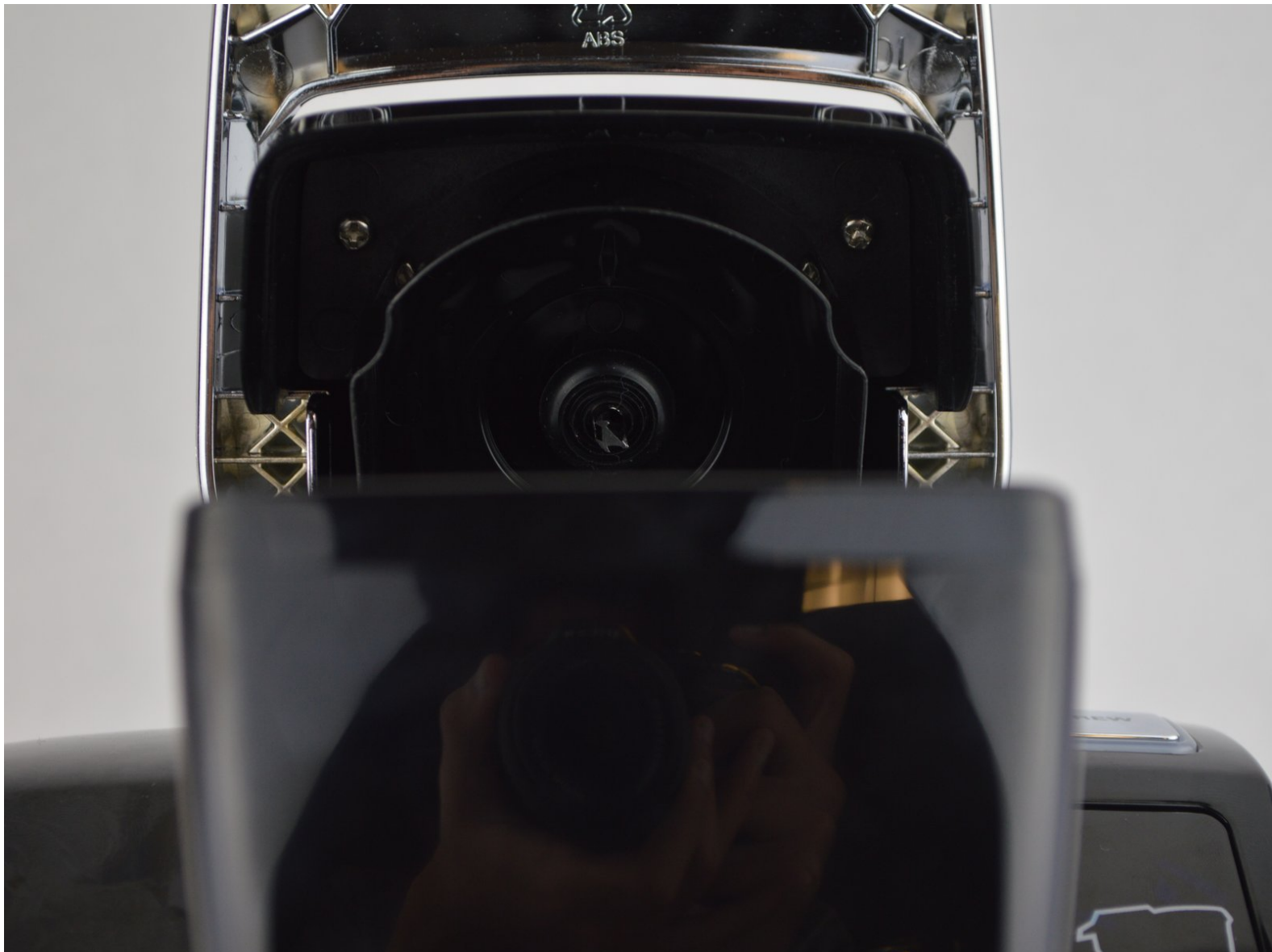




Keurig K10 MINI PLUS Top Needle Replacement

This guide will help you to know how will we replace the device's top needle, if it is not working properly.

Written By: Mark Henein



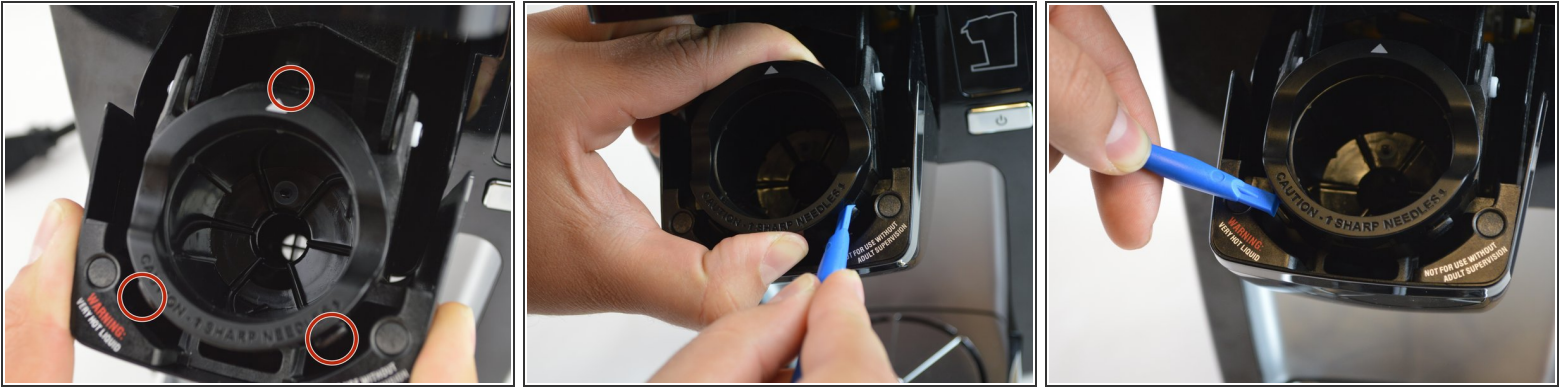
INTRODUCTION

This guide will help walk you through the steps of replacing the needle of a Keurig Mini. To get into the device all you will need is a #1 Philips screw driver.

TOOLS:

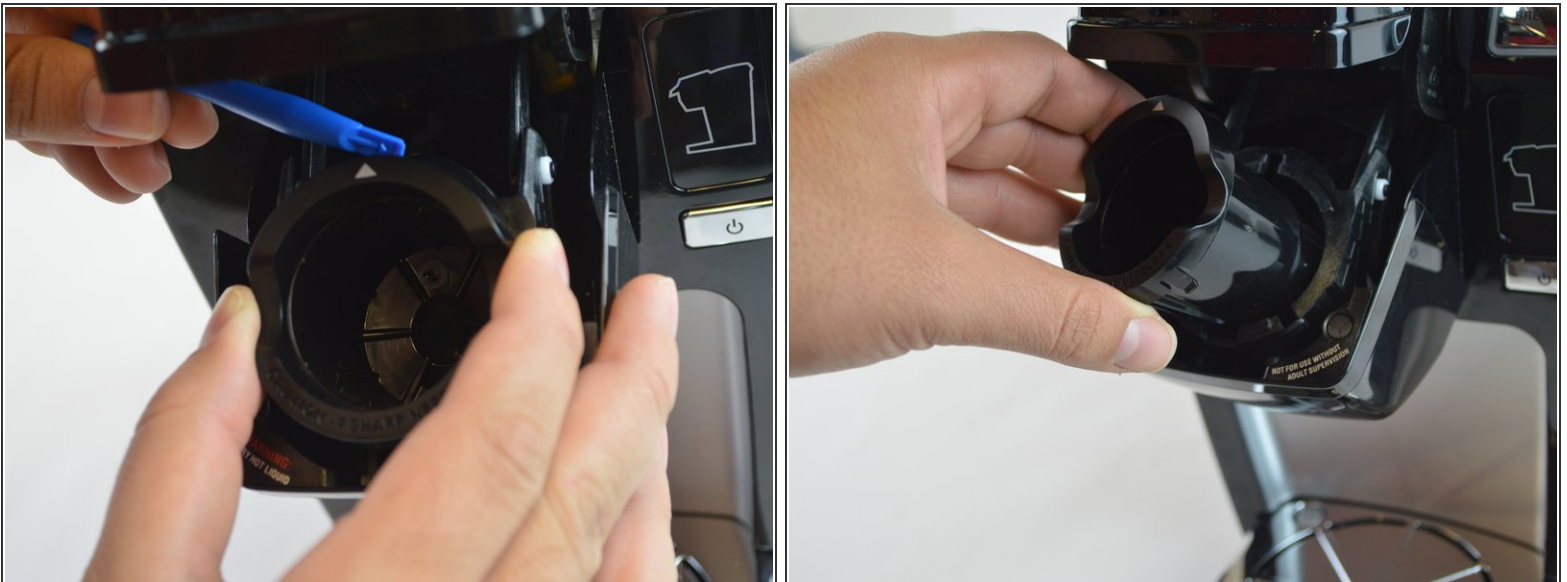
- [iFixit Opening Tools](#) (1)
 - [Phillips #1 Screwdriver](#) (1)
-

Step 1 — Cup Holder



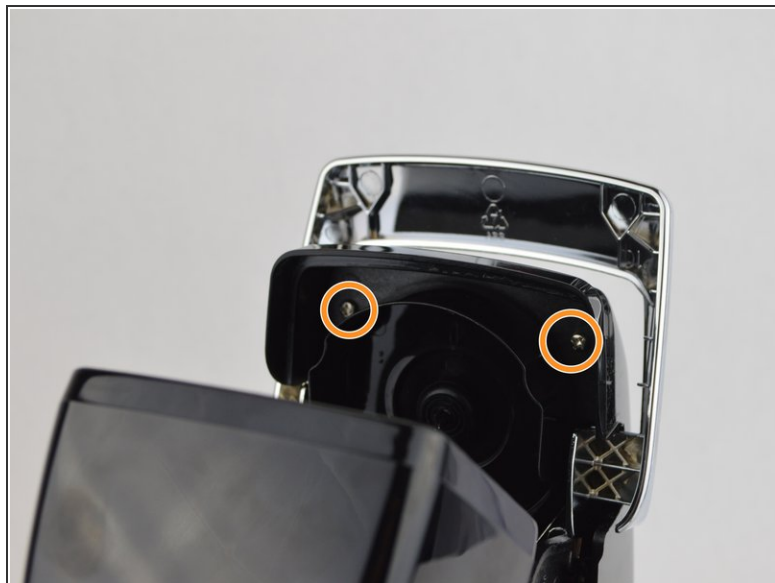
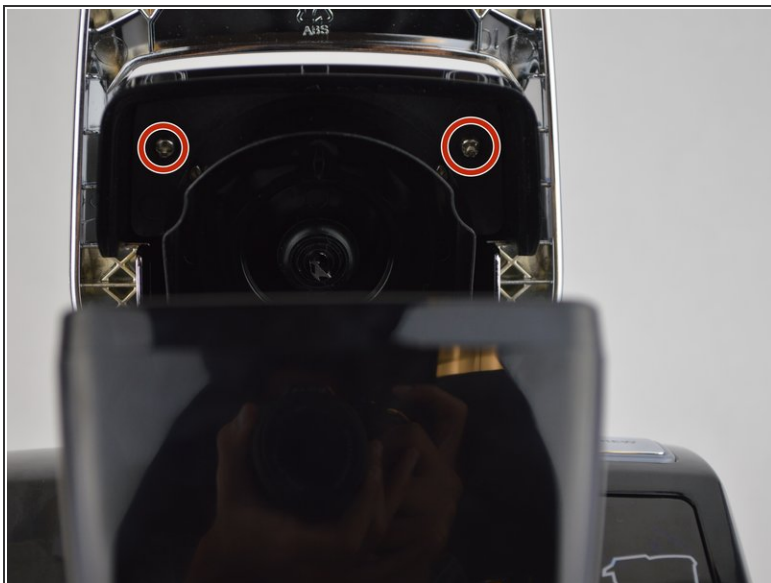
- Press on tab while pulling up on K-cup until you hear a click. Repeat for the remaining tabs. We found using the smallest of the "plastic opening tools" worked wonders.

Step 2



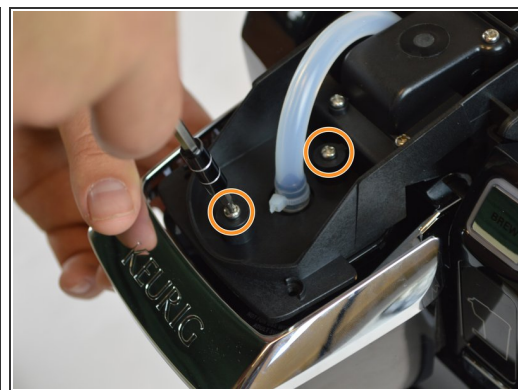
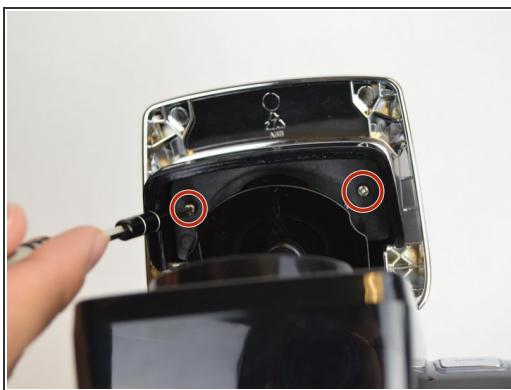
- Once all of the tabs have been pressed, the K-Cup should just pop out. After, you just pull the remainder of the K-Cup. You have successfully removed the K-Cup.

Step 3 — Top Needle



- Remove two 9 mm Phillips #1 screws.
- ⚠ Avoid the top needle if at all possible. The needle may cut you and/or penetrate your skin.
- The screws are located on the top of where the K-Cup would be.

Step 4



- Once you remove the screws, the top cover should come out.
- You will then want to remove these screws which are the same size.
- ⚠ The needle is sharp, so be careful.

Step 5



- Once you get those removed, you are going to want to pull on the hose until it pops off.
- Once the hose comes off, the needle will fall out by itself.
- ⚠ Be careful when picking up the needle as the needle is sharp.

To reassemble your device, follow these instructions in reverse order.