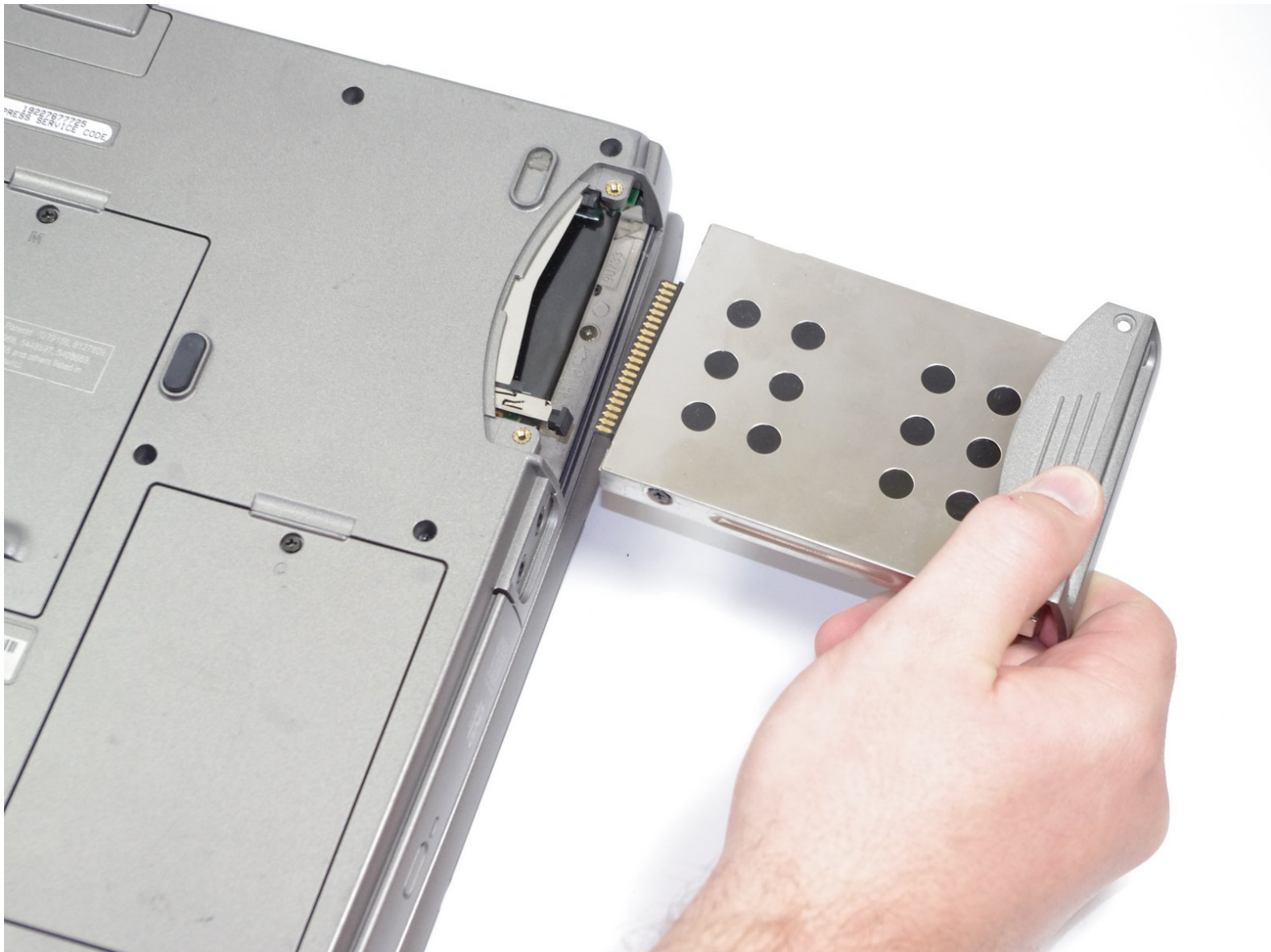




# Dell Inspiron 5100 PP07L Hard Drive Replacement

If you want to replace your hard drive for a larger drive or if it's corrupted.

Written By: May Chauvin



---

## INTRODUCTION

You will learn how to remove the hard drive.

---

### TOOLS:

- [Phillips #1 Screwdriver](#) (1)
-

## Step 1 — Hard Drive



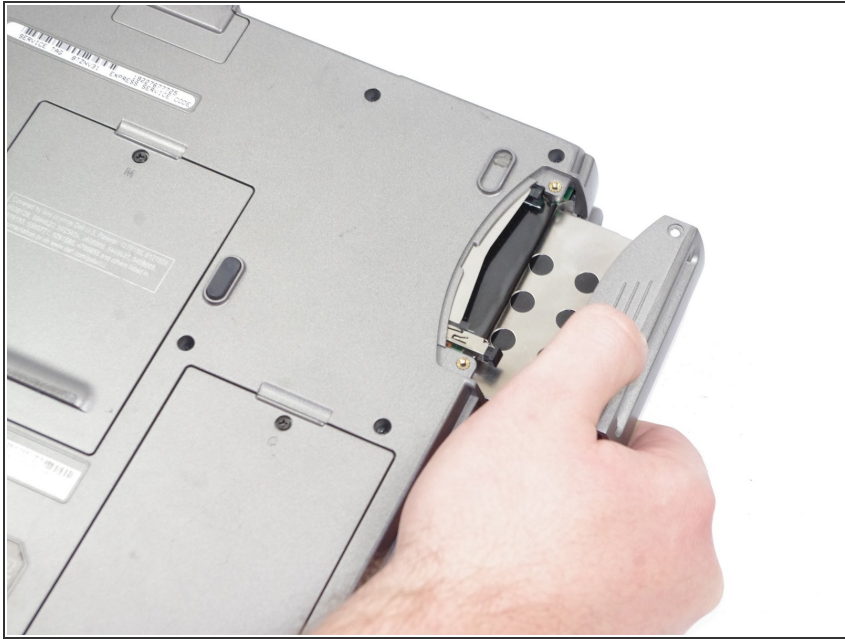
- With the lid closed, place the laptop upside-down on a flat surface.

## Step 2



- Remove the two 5.8mm screws securing the hard drive bay.
  - If the computer was right-side-up and rotated for use, the bay would be found in the rear left corner.

### Step 3



- Grasp the plastic bay handle and slide outwards to remove.

To reassemble your device, follow these instructions in reverse order.