



Keurig K10 Mini Plus Cup Holder Replacement

Can be identified by Serial Number: 31.2000.2338851 Manufactured by Keurig

Written By: Mark Henein



INTRODUCTION

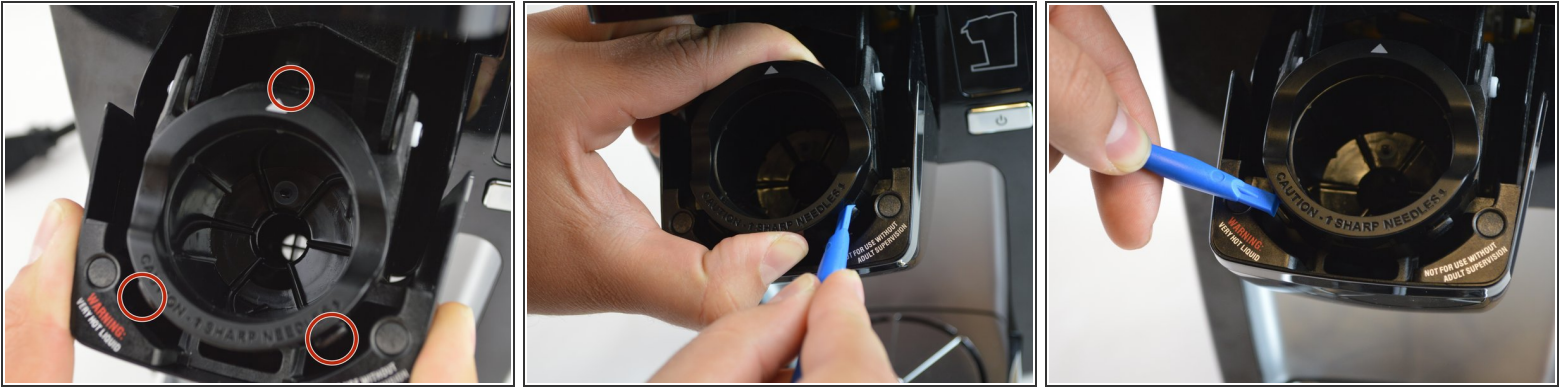
In this guide we will show you how to successfully remove the K-cup holder.

TOOLS:

- [iFixit Opening Tools](#) (1)

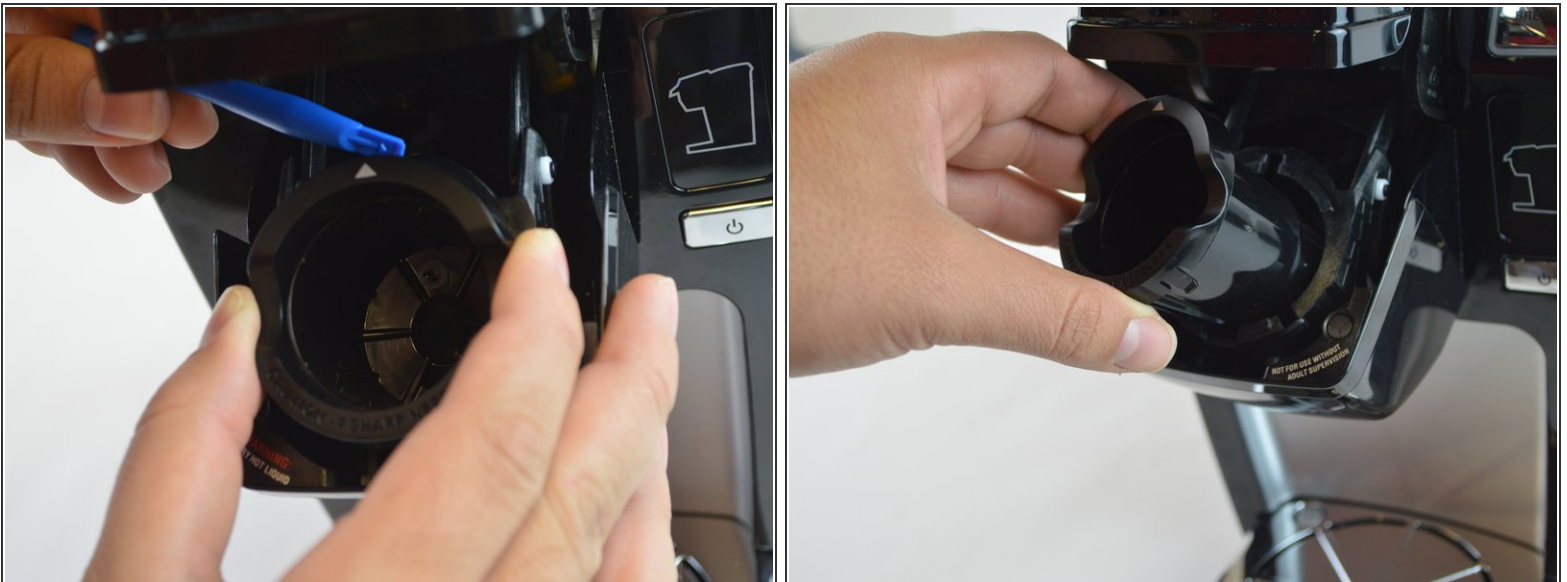
*using the smallest opening tool available will work.
Just needed to press down on tabs.*

Step 1 — Cup Holder



- Press on tab while pulling up on K-cup until you hear a click. Repeat for the remaining tabs. We found using the smallest of the "plastic opening tools" worked wonders.

Step 2



- Once all of the tabs have been pressed, the K-Cup should just pop out. After, you just pull the remainder of the K-Cup. You have successfully removed the K-Cup.

To reassemble your device, follow these instructions in reverse order.