



Samsung Galaxy Tab S2 SD Card Replacement

Replacement of a micro SD card

Written By: Jovina Martinez



INTRODUCTION

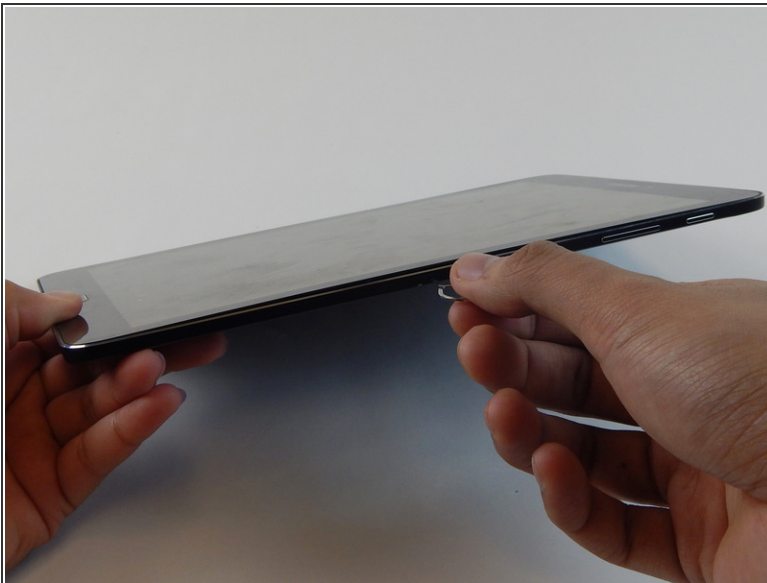
If you need additional space to hold data like music, photos or games (among other things) you may need to insert an SD card into the device.

Step 1 — SD Card



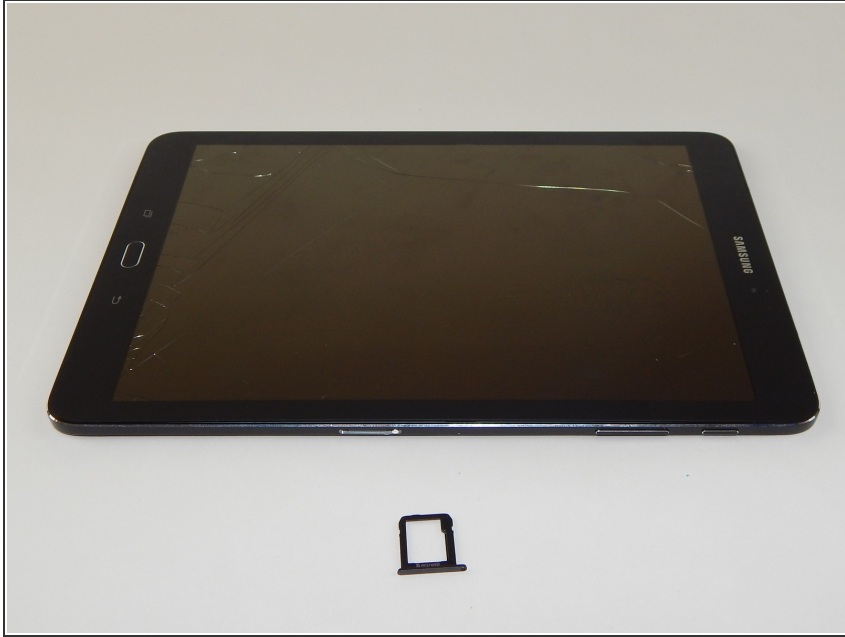
- Locate the small hole on the right side of the device.

Step 2



- Using the tool supplied with the Galaxy Tab, insert the pointed end into the hole on the side of the device.
- Apply pressure until the plastic SD card slot pops out.
- Gently pull out the plastic insert completely.

Step 3



- Insert the Micro SD Card in the plastic insert, and replace it into the device.
- ⓘ This device can only handle SD cards with memory up to 64 GB.

To reassemble your device, follow these instructions in reverse order.

This document was last generated on 2017-07-09 11:01:34 PM.