



# Palm Zire m150 Control Button Replacement

Control button on your Palm Zire m150 not working after you have cleaned them? It's time to replace the button on your device!

Written By: Kate



## INTRODUCTION

This guide will teach you how to replace the control button on your Palm Zire m150. If you don't need to replace it, it will also teach you how to take the device apart in order to clean the control button.

### TOOLS:

- [iFixit Opening Picks set of 6](#) (1)
- [64 Bit Driver Kit](#) (1)

### PARTS:

- [New control button for Palm Zire M150](#) (1)

## Step 1 — Control Button



- Lift up the flap on the Palm Zire M150.
- ⓘ For the purpose of this guide and being able to see clearly, we removed the flap completely. You can keep your flap on if you wish.
- If you wish to remove it, gently lift up on the flap and pull horizontally. It should come off without an issue.

## Step 2



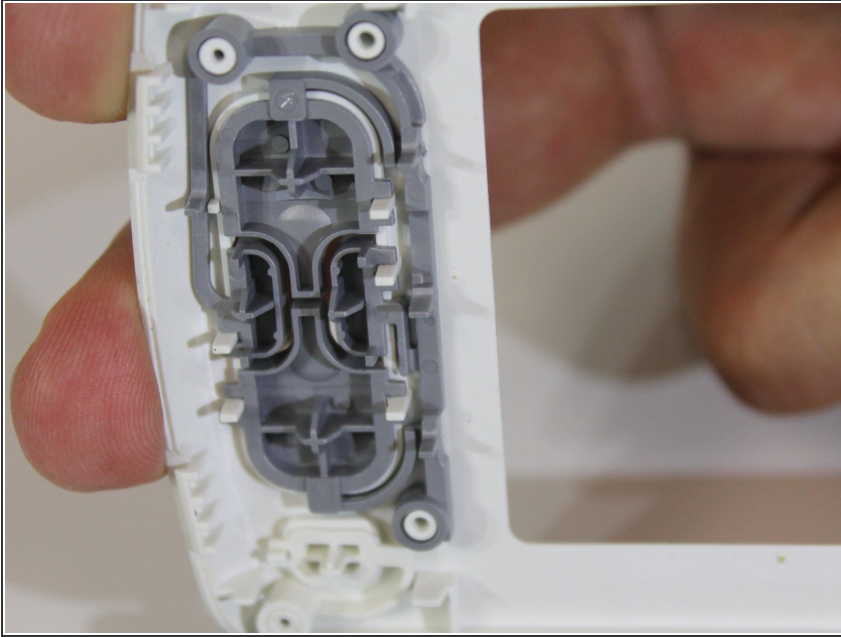
- Take the screwdriver from the iFixit toolkit and use the T6 bit. Unscrew the the top two 3mm screws above where the flap was connected to the device.

## Step 3



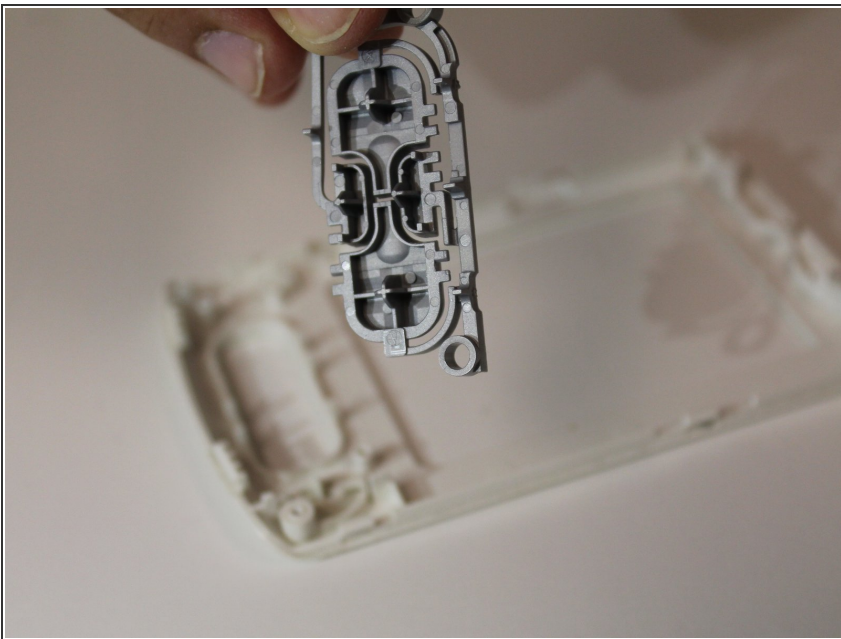
- Gently pull the top half and bottom half off the device apart using both hands so that it looks like the second photo.
- ⓘ You can use your finger nails to pry apart the top half and the bottom half of the device. If that doesn't work, use the opening picks from the toolkit.

## Step 4



- This is the button that you are going to be replacing. Grab the grey button and pull it apart from the device.
- ⚠ If you are not replacing the button and you are just cleaning it, make sure you are gentle when you pull it from the device so that you don't break the button.
- ⓘ You can use compressed air to clean them or an alcohol wipe.

## Step 5



- The button is now off of the device. If you are cleaning it, use the compressed air or the alcohol wipe.
- If installing a new button, throw away the one you just took off and snap the new one back on the white piece.

To reassemble your device, follow these instructions in reverse order.