



Motorola Moto E 2nd Generation Display Assembly Replacement

This guide will help replace the Moto E's screen if it is cracked or unresponsive.

Written By: Andre Romualdo



INTRODUCTION



Replacing the touch screen requires the use of a heat gun. Mishandling a heat gun can cause serious burns so use caution while handling it.

TOOLS:

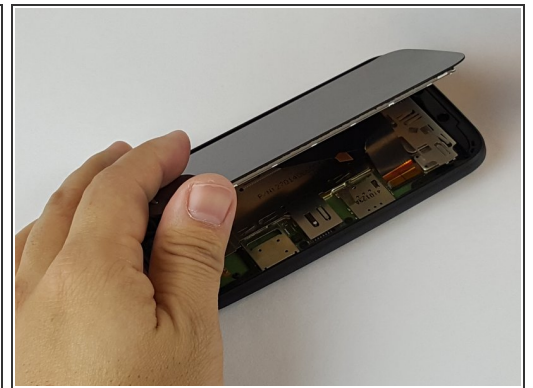
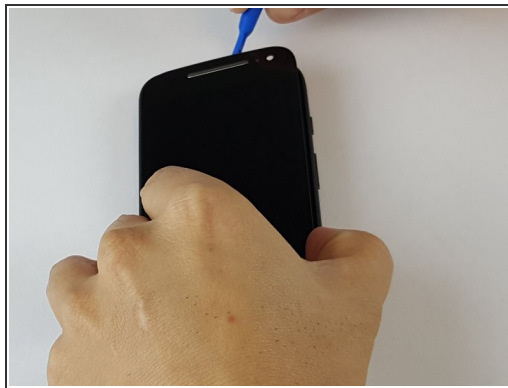
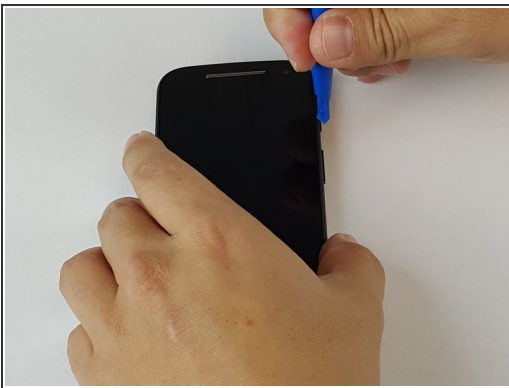
- [Heat Gun](#) (1)
 - [iFixit Opening Tools](#) (1)
-


Step 1 — Display Assembly



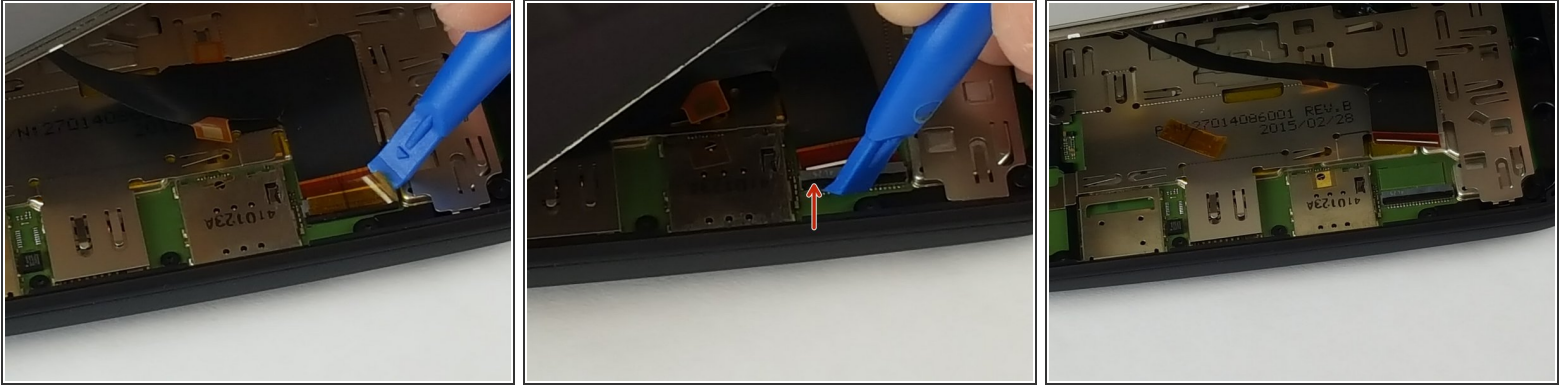
-  Turn off the device before beginning your repair.
-  Using a heat gun, carefully apply heat around the edges of the display to soften the glue. Heat should be applied to the point where the phone isn't too hot to touch, but close enough.

Step 2



- Using the small plastic opening tool, pry and slide all the way around the phone while carefully lifting up on the display.
-  The screen is secured by two-sided tape located on the edge.

Step 3



- Once display is fully unglued from the frame, carefully lift it up and locate the display connector.
- Using the same small plastic tool, carefully remove the yellow tape off the connector.
- Now carefully undo the black connector lock by lifting it up in the direction of the red arrow.
⚠ Do not pry on the gray part of the connector.
- Lastly slide the display cable off the connector. It should easily slide off, if not make sure the black lock is fully unlatched.

To reassemble your device, follow these instructions in reverse order.

This document was last generated on 2019-07-11 09:30:27 AM.