



Fitbit charge HR Disassembly

Fitbit charge teardown. It stopped working and was sent a new one so tore old one open...wondering if possible to replace battery (cant find a replacement) as the voltage is 0. LSSP031420AB lipoly battery.

Written By: Hunter



INTRODUCTION

Fitbit charge teardown. It stopped working and was sent a new one so tore old one open...wondering if possible to replace battery (cant find a replacement) as the voltage is 0.

LSSP031420AB lipoly battery.

TOOLS:

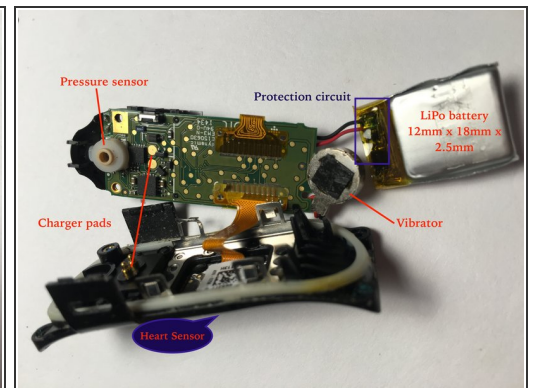
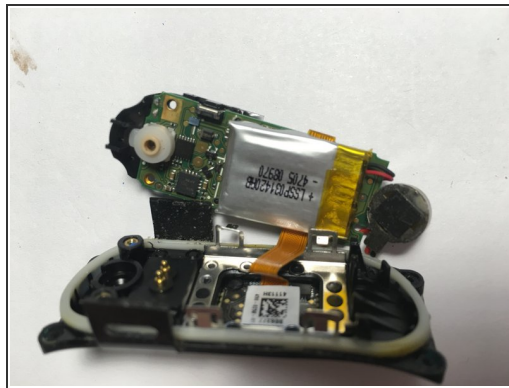
- [T3 Torx Screwdriver](#) (1)

Step 1 — Removing the guts



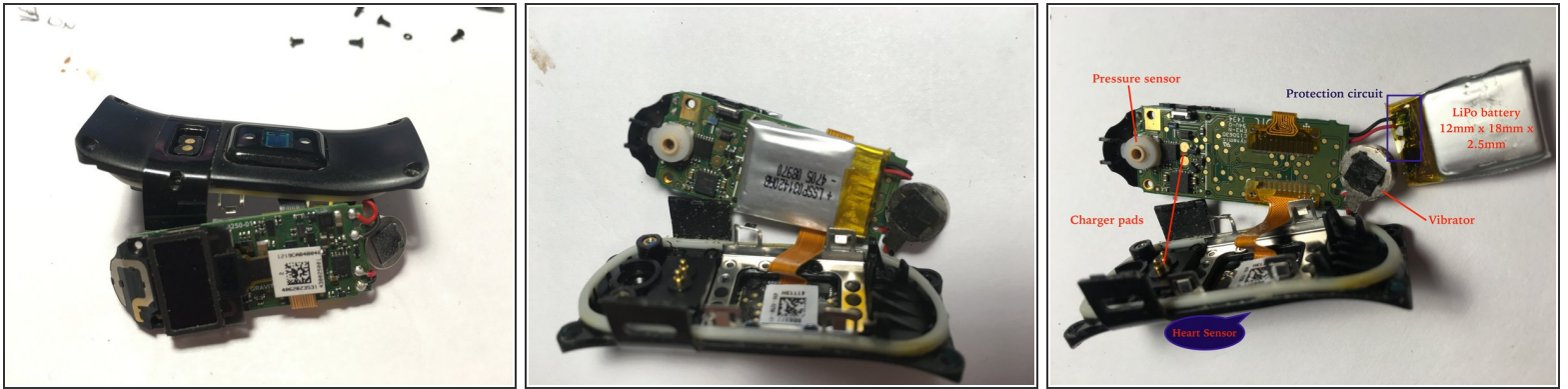
- Remove all four T3 Torx screws. Then "pop" out the electronics by pressing in the reset hole and pushing out the side with a pin. Use your thumb and push it up towards the wrist band clip (top in this picture). The unit "slides" up and out.

Step 2 — Remove top board to expose battery



- To access the lipo, remove the two screws above the screen. Pull the circular vibrating motor out and pull out the board.

Step 3 — Exploring the inside



- Image 3a) Two inner screws removed, case gently pried open.
- Image 3b) Obverse, showing battery glued onto the circuit. Be careful when prying this up as it could pull off the other connectors.
- Expanded view showing battery pried out.