



# Acer Chromebook CB3-111-C670 WLAN Chip Replacement

This guide will walk you through the steps for replacing the Acer Chromebook CB3-111-C670 WLAN chip.

Written By: lott



## INTRODUCTION

The Acer Chromebook CB3-111-C670 uses an Intel WLAN Wireless Board 7260NGW. This guide will teach you how to disassemble your Chromebook and replace the WLAN chip.

### TOOLS:

- [Phillips #000 Screwdriver](#) (1)
- [iFixit Opening Tools](#) (1)

### PARTS:

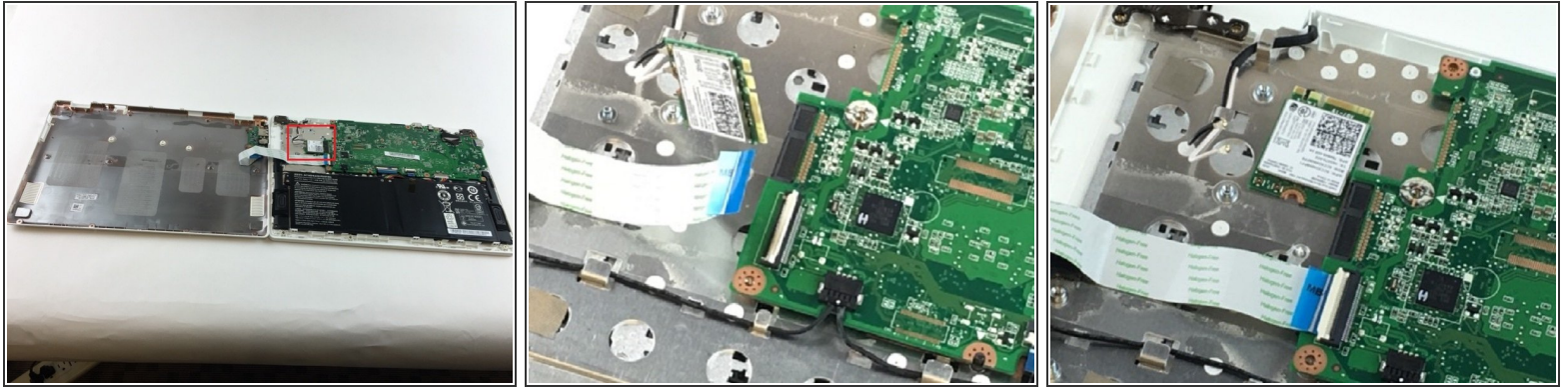
- [Acer Chromebook CB3-111-C670 Wi-Fi Board](#) (1)

## Step 1 — WLAN Chip



- Turn the Chromebook over so that the back panel with the tag and serial number is facing upward.
- Locate the twelve screws and unscrew them using your nut/screw driver.
- After removing each of the twelve screws, use a plastic opening tool to detach the back panel by inserting it in between crease where the back panel and the main board meets. You should hear a slight click, this is the sound of the back panel becoming detached from the board.
  - The best way to do this is to start at one of the four corners of the Chromebook and gently work around the edges. Be careful not to apply too much force or else you might damage the ribbon cable which connects the back panel to the motherboard.
- Once you have detached the back panel, do not lift it vertically from the Chromebook. With the Chromebook facing in the direction of the picture above, take the outer right hand side of the back panel and lift it toward the left as if you are opening the front cover of a book.

## Step 2



- Locate the WLAN chip near the top left corner of the motherboard. It is connected to the left edge of the motherboard and has two smaller wires connected to the wireless adapter itself.
- First, grasp the top and bottom edge of chip using your fingers and gently disconnect it from the motherboard.
- The WLAN chip has two small wires connected to it, which can be disconnected from the card by pulling them very gently.

To reassemble your device, follow these instructions in reverse order.