



# Samsung Galaxy Mega Battery Replacement

Replace or remove the battery of your Samsung Galaxy Mega.

Written By: Aaron Fulton



---

## INTRODUCTION

The guide will show the process of safely changing the battery of your device.

---

### TOOLS:

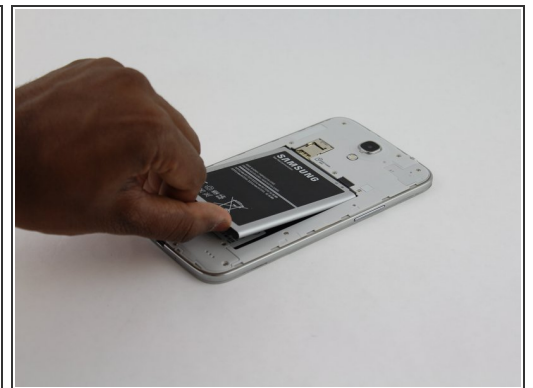
- [iFixit Opening Tools](#) (1)
-

## Step 1 — Battery



- Before starting, ensure device is completely turned off.
- On the back of phone, locate the slot on the top left corner.
- Insert plastic opening tool or fingernail and pull up on the back plate.
- With the corner released, slide your finger around the device between the back plate and the phone to release connectors.

## Step 2



- Insert fingernail into the slot on bottom of battery and gently pull up.
- Remove the battery.

To reassemble your device, follow these instructions in reverse order.