



Samsung Galaxy Tab A Battery Replacement

This guide will show you how to access and replace the battery.

Written By: Michael Wozny



INTRODUCTION

A battery, after a certain period of time, will begin to lose its life span after a charging period. This guide highlights how to remove the back cover of the tablet in order to get to the battery as a means to replace it.

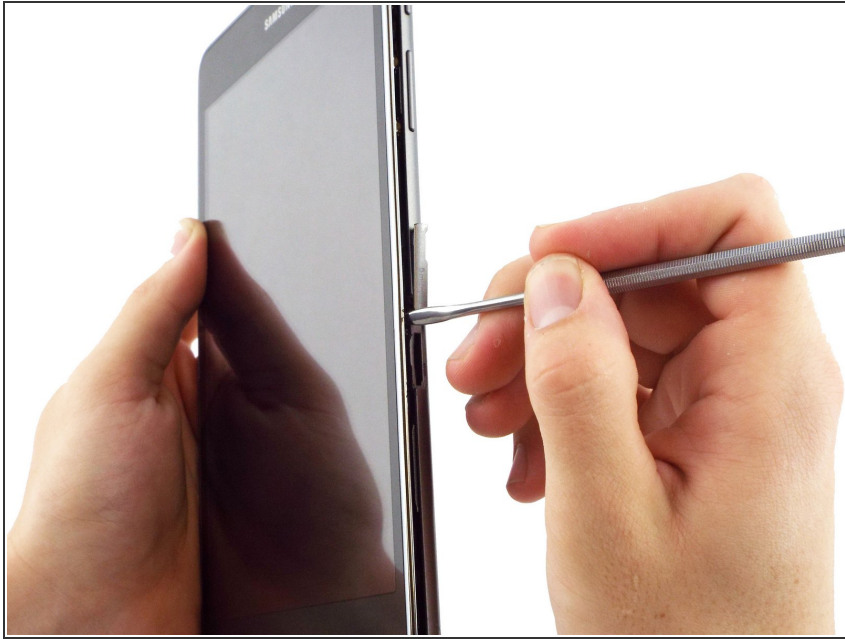
TOOLS:

- [Metal Spudger Set](#) (1)
- [Precision Tweezers Set](#) (1)
- [Spudger](#) (1)

PARTS:

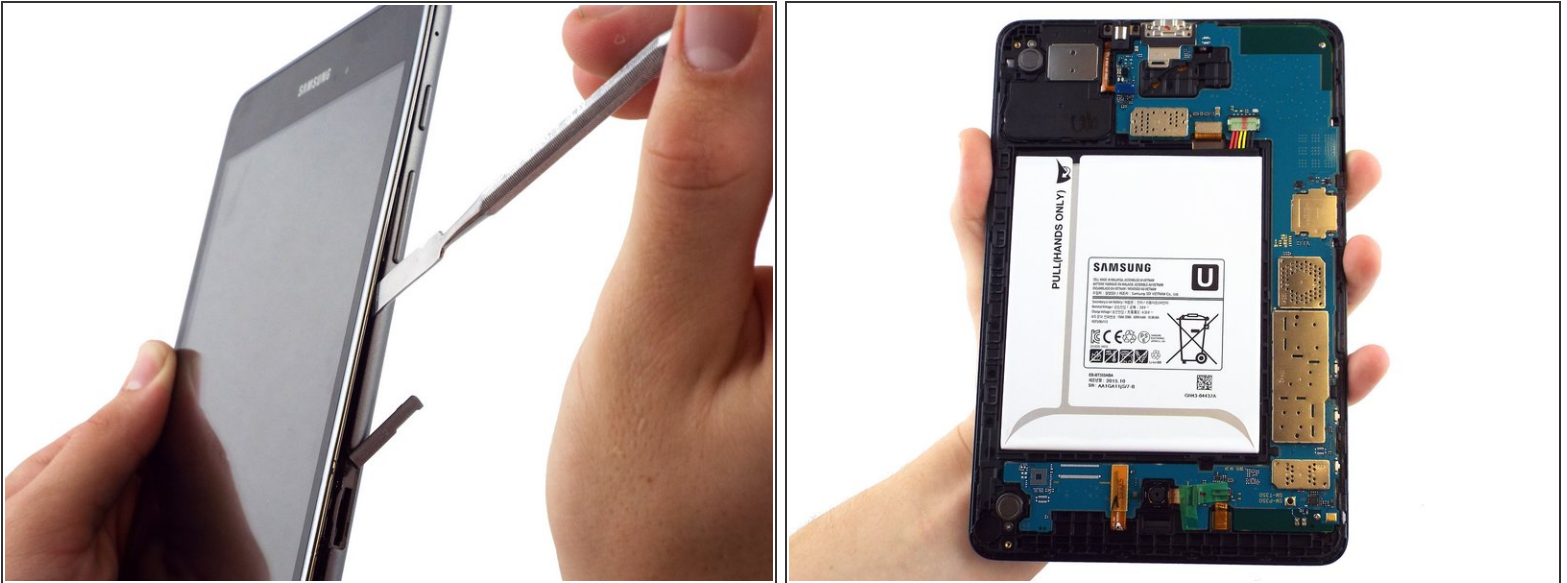
- [Samsung Galaxy Tab A 8.0 Battery](#) (1)

Step 1 — Battery



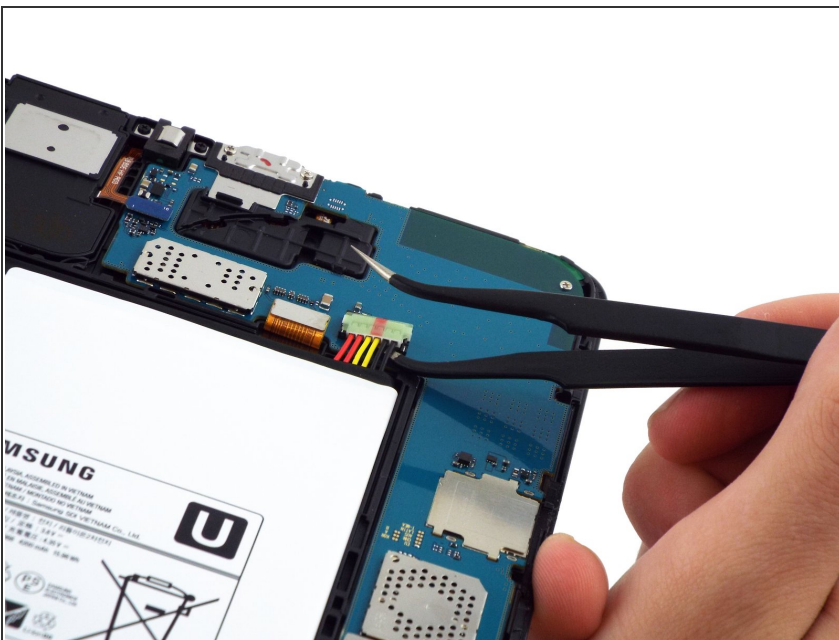
- ⚠ Make sure the device is turned off before attempting to disassemble it.
- At the top portion of the memory card slot, use the small metal spudger to create separation between the back cover and the rest of the device.
- ⓘ The small metal spudger is only used to create separation between the back cover and the rest of the device, not to remove the back cover.
- ⓘ If possible, try to use a normal nylon spudger to separate the back cover, as it is much softer and less likely to mar/scratch the device.

Step 2



- Use the intermediate metal spudger in place of the small metal spudger to remove the back cover. This is done by sliding the intermediate metal spudger around the perimeter of the device, beginning at the top portion of the memory card slot.
- The second picture shows the internal portion of the device once the back cover is removed.

Step 3



- Disconnect the electrical connector from the motherboard using the bent precision tweezers.
- ⚠️ Avoid touching the motherboard with the tweezers. Metal tools such as the tweezers can scratch the motherboard and potentially cause damage.

Step 4



- Use the flat end of the plastic spudger to pry the battery apart from the rest of the device.
- ⓘ An alternative method is to loosen the battery using the plastic spudger, and then to remove the battery by pulling on the paper tab that says "Pull (Hands Only)."
- Once the back cover and battery are removed, the device should look like as illustrated in the second picture.

To reassemble your device, follow these instructions in reverse order.