



Samsung Galaxy Mega Midframe Replacement

Remove or replace the back panel assembly of your Samsung Galaxy Mega. Back panel assembly provides access and protection for all internal components.

Written By: Aaron Fulton



INTRODUCTION

This guide instructs on how to replace a damaged back panel assembly. The back panel assembly provides the protection for all the internal components of the device. Most components of this device require the removal of the back panel to gain access to them.

TOOLS:

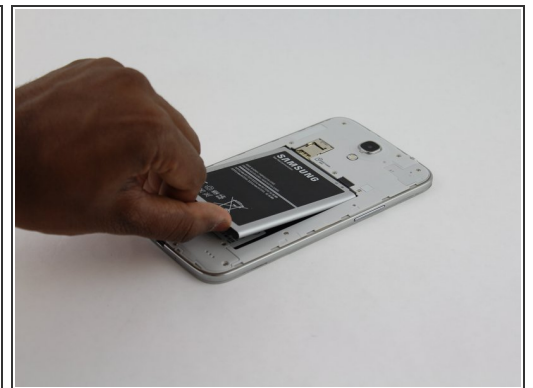
- [Metal Spudger](#) (1)
 - [Phillips #000 Screwdriver](#) (1)
 - [iFixit Opening Tools](#) (1)
-

Step 1 — Battery



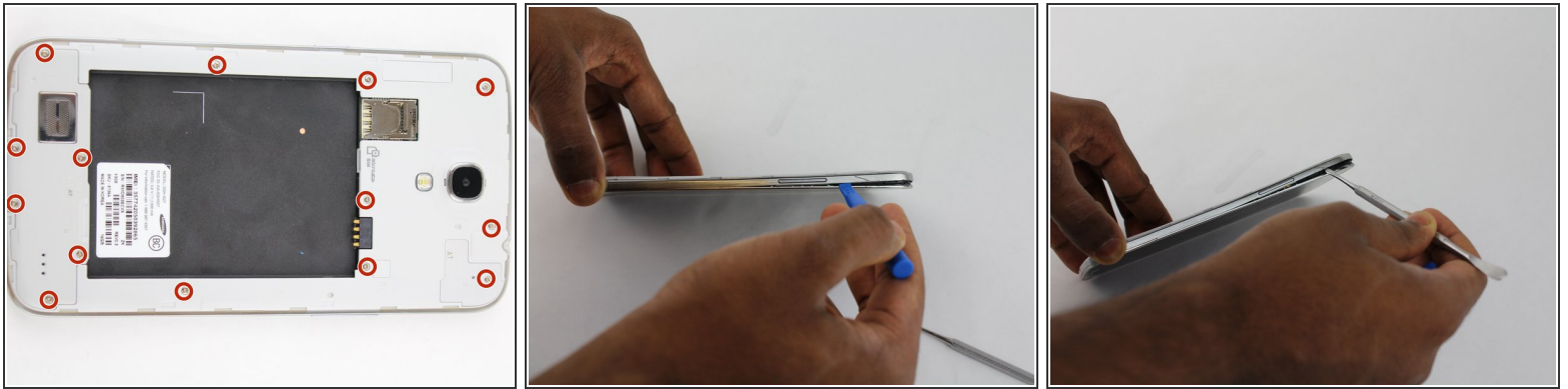
- Before starting, ensure device is completely turned off.
- On the back of phone, locate the slot on the top left corner.
- Insert plastic opening tool or fingernail and pull up on the back plate.
- With the corner released, slide your finger around the device between the back plate and the phone to release connectors.

Step 2



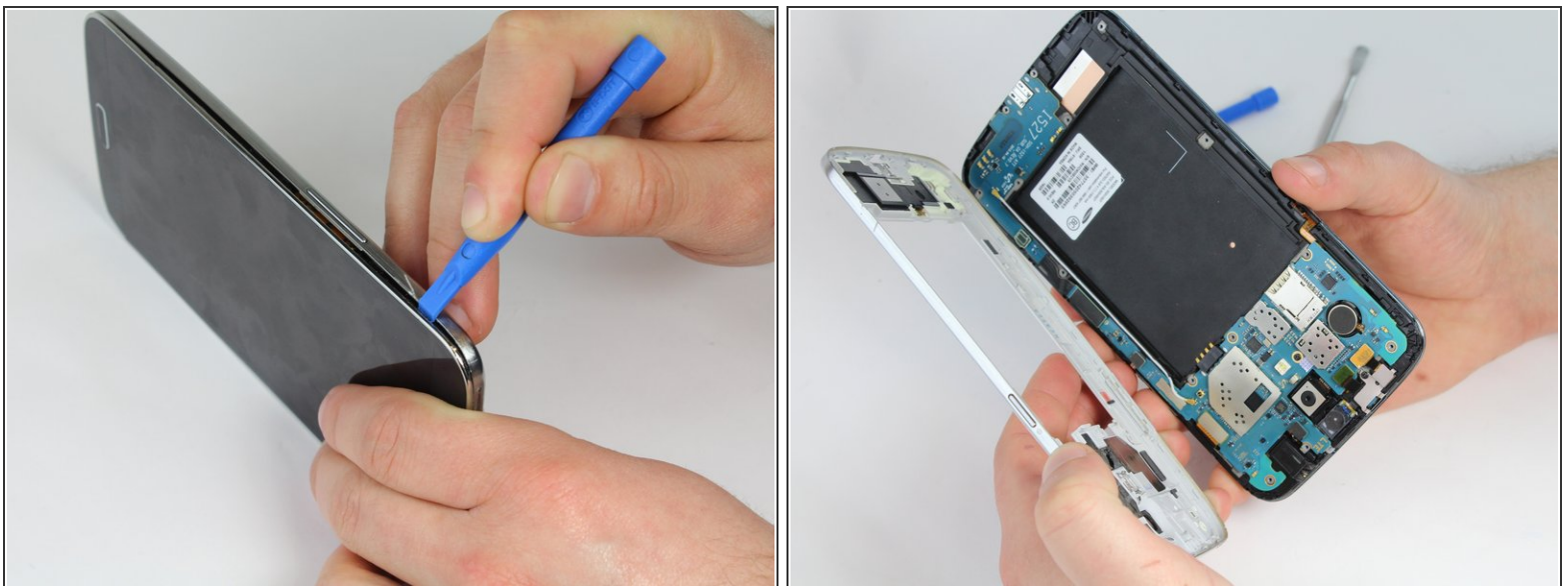
- Insert fingernail into the slot on bottom of battery and gently pull up.
- Remove the battery.

Step 3 — Midframe



- Remove the 14 3.45 mm Phillips #000 screws from the assembly.
- Gently, insert plastic opening tool into seam above the volume buttons of your phone.
 - ⓘ You may substitute metal spudger for plastic opening tool to first start the opening of the seam. This may cause exterior cosmetic damage.

Step 4



- Slowly slide plastic opening tool around the device to release all the connectors internal to the device.
- The device should easily come apart after the plastic opening tool is slid around the entire device.

During reassembly, ensure volume and power buttons align properly.

This document was generated on 2020-11-17 11:17:00 PM (MST).



To reassemble your device, follow these instructions in reverse order.