



Repairing Samsung Galaxy S SCH i500 Back Case

Installing the back case of the Samsung Galaxy S SCH i500.

Written By: Kevin Carlson



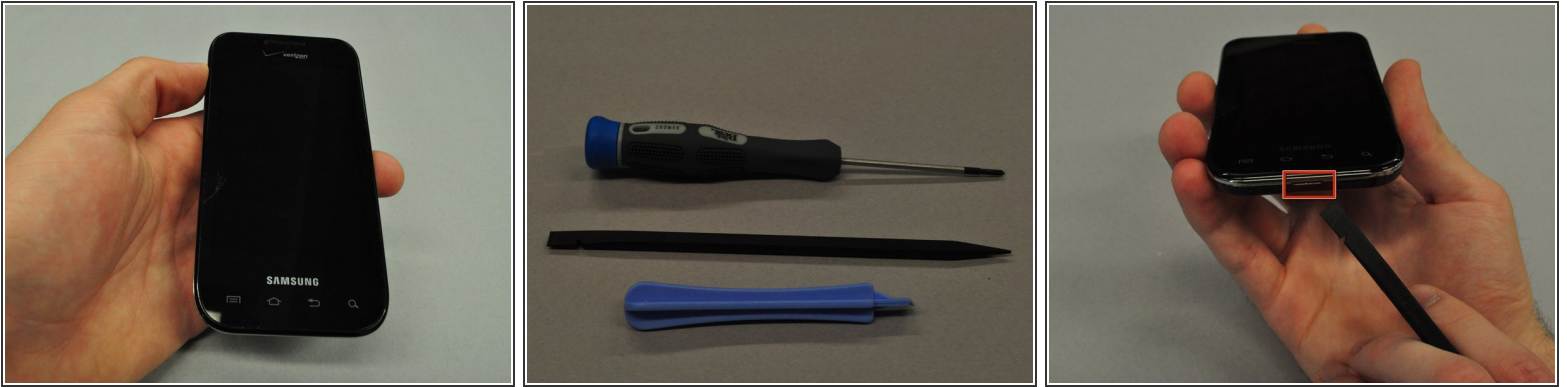
INTRODUCTION

This guide will show you how to remove the back case of the Samsung Galaxy S SCH i500.

TOOLS:

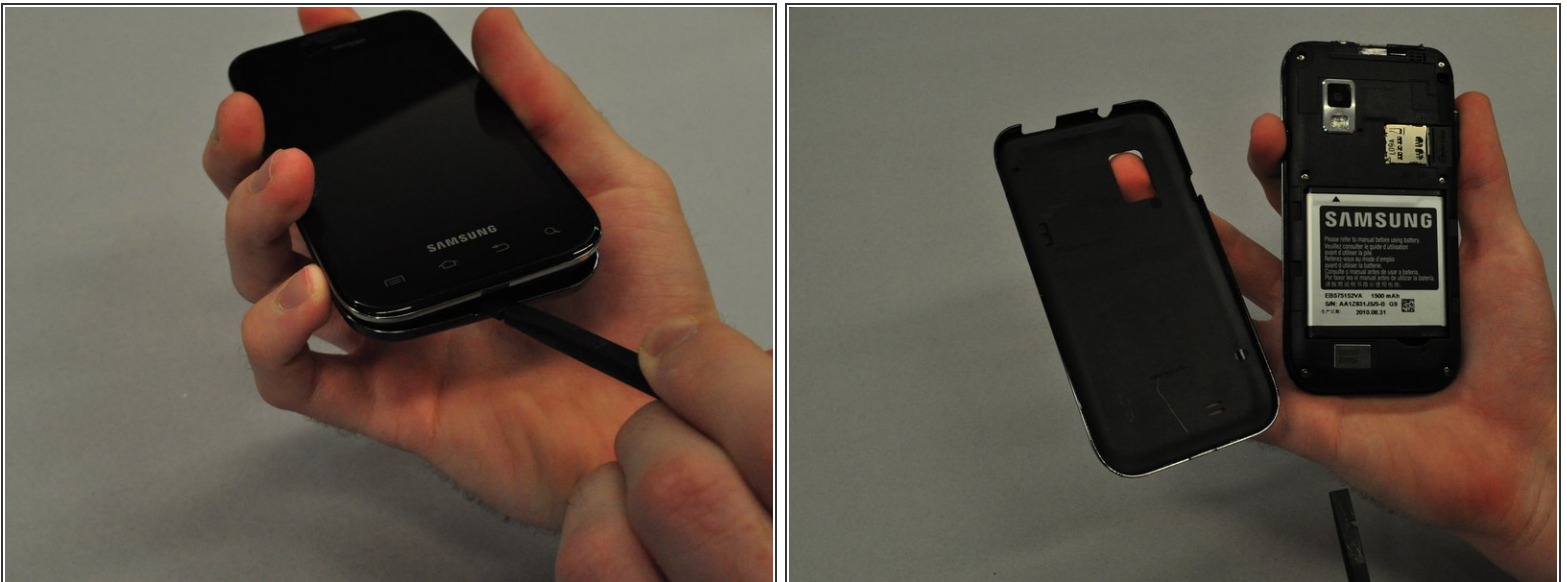
- [Spudger](#) (1)
-

Step 1 — Back Case



- To remove the back case of the Samsung Galaxy S, you may need a spudger.
- Identify the slit which is at the bottom edge of the phone.

Step 2



- Insert the edge of the spudger into the slit and use it to pry the back case off of the phone.

To reassemble your device, follow these instructions in reverse order.