



Repairing Samsung Galaxy S SCH i500 Battery

Remove and/or replace the battery of the Samsung Galaxy S SCH i500.

Written By: Kevin Carlson



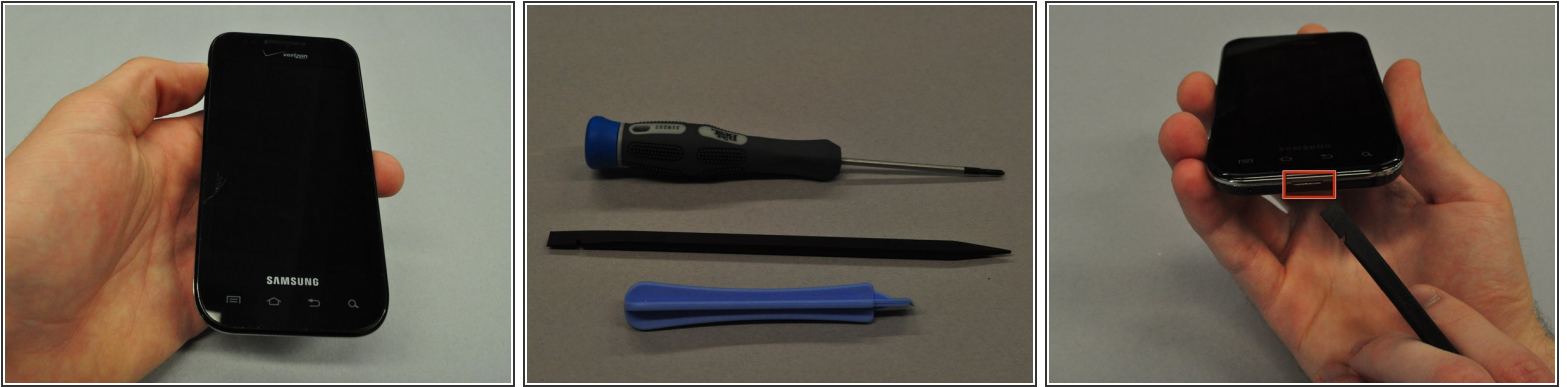
INTRODUCTION

This guide will show you how to access the battery of the Samsung Galaxy S so that you may remove and/or replace it.

TOOLS:

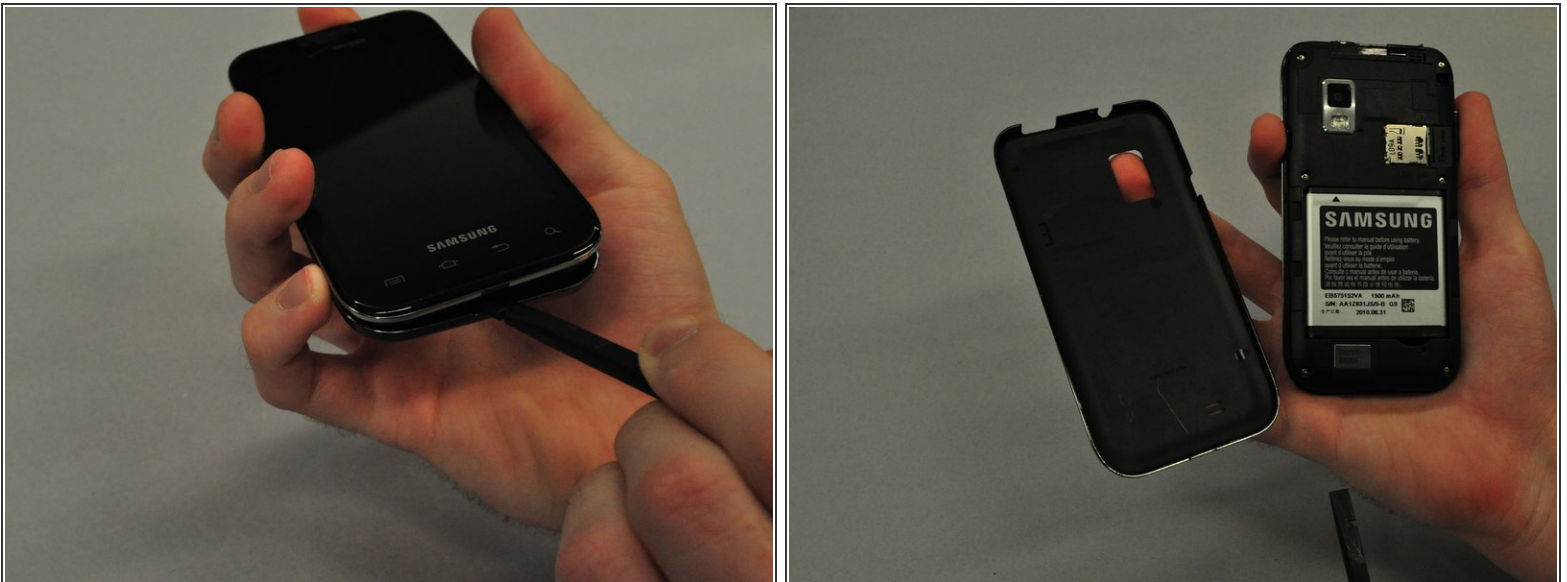
- [Spudger](#) (1)
-

Step 1 — Back Case



- To remove the back case of the Samsung Galaxy S, you may need a spudger.
- Identify the slit which is at the bottom edge of the phone.

Step 2



- Insert the edge of the spudger into the slit and use it to pry the back case off of the phone.

Step 3 — Battery



- Insert the spudger into the space between the battery and the phone and pry the battery out as you slide it along the underside the battery.

To reassemble your device, follow these instructions in reverse order.

This document was last generated on 2019-07-16 05:34:39 PM.