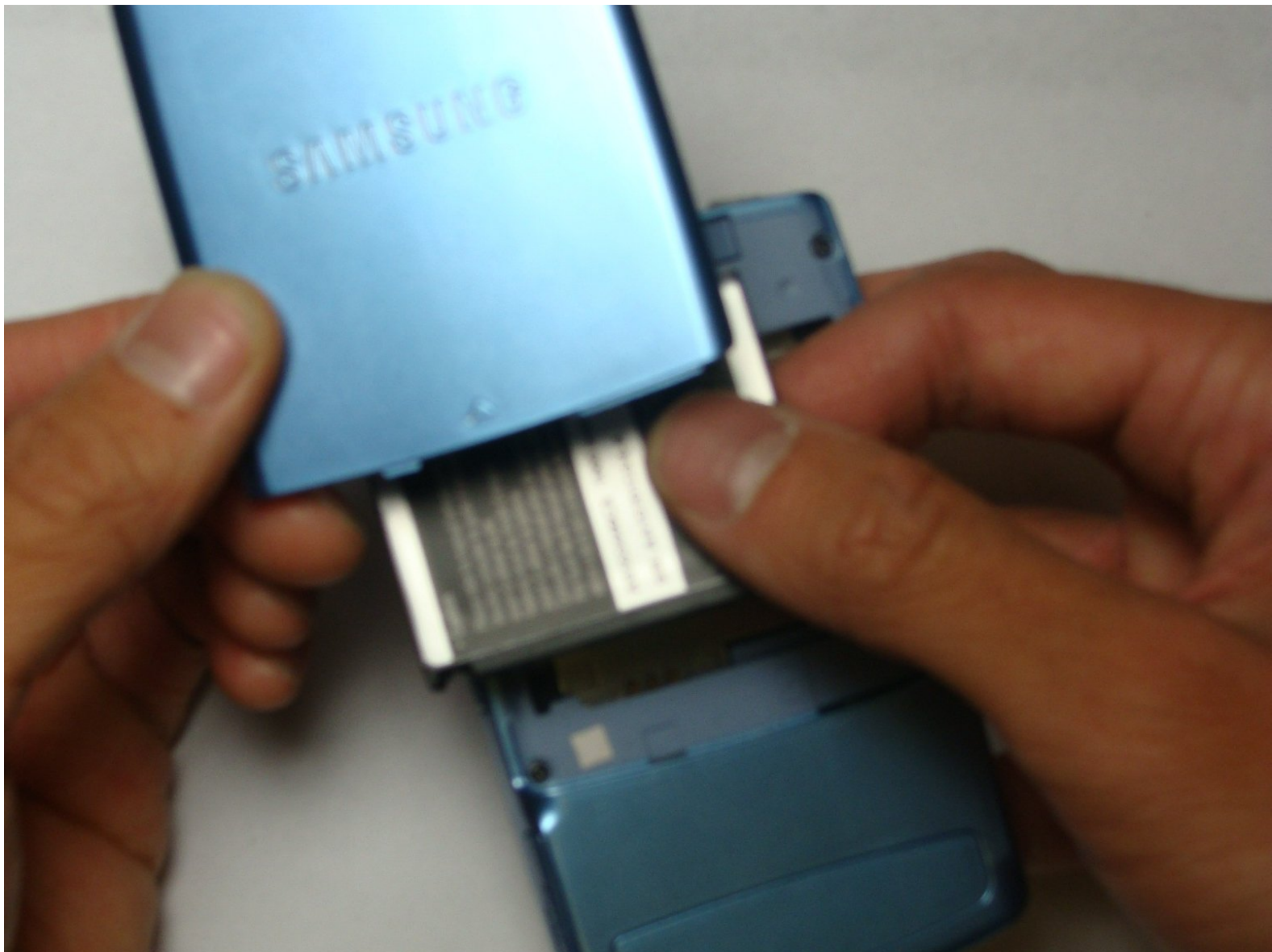




Samsung Propel Battery Replacement

This guide will allow users with the knowledge and technique to remove the battery.

Written By: mdoan



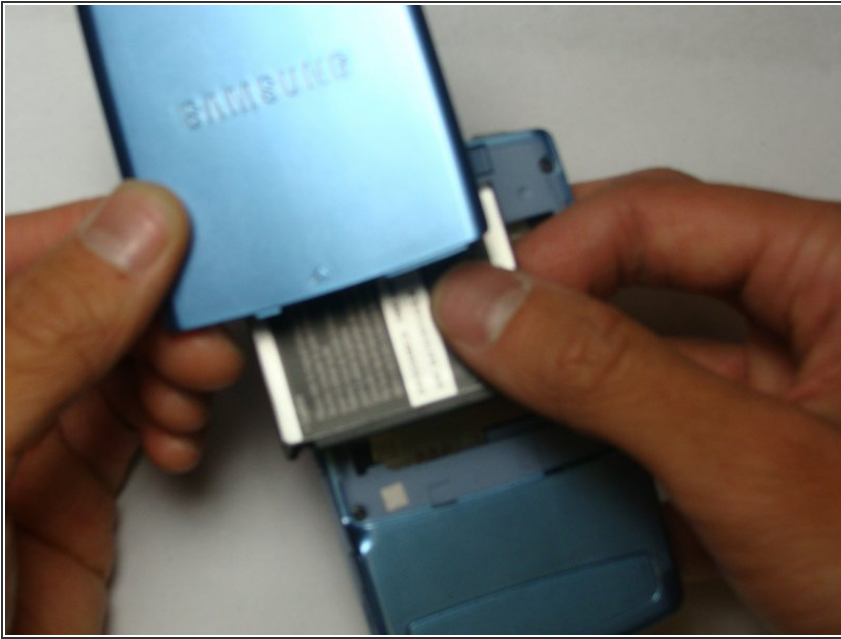
INTRODUCTION

This guide will enable users to remove and replace the battery.

TOOLS:

- Drill (hand drill or powered drill) with 1.5mm~2mm (1/16"~5/64") Twist drill bit (1)
-

Step 1 — Battery



- Press down the back and push up to remove back cover.
- Insert finger into gap at the top left and remove battery.

To reassemble your device, follow these instructions in reverse order.