



Samsung Propel Motherboard Replacement

Samsung Propel can have numerous problems that cause it to not work properly. The source of these problems can be caused by a fried motherboard.

Written By: Minh



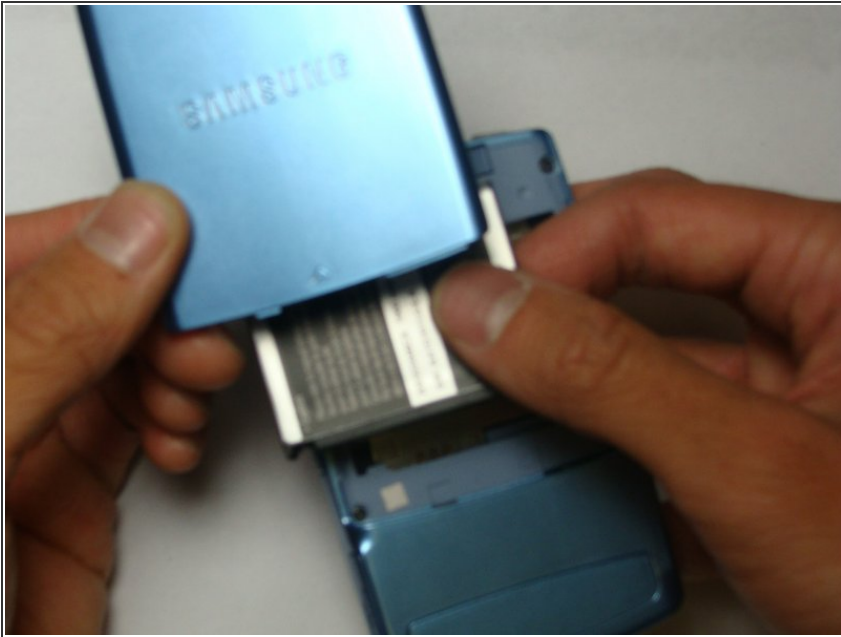
INTRODUCTION

This guide will demonstrate careful steps to remove the motherboard from the phone without damaging the the interconnection parts.

TOOLS:

- [Phillips #00 Screwdriver](#) (1)
 - [Flathead 3/32" or 2.5 mm Screwdriver](#) (1)
-

Step 1 — Battery



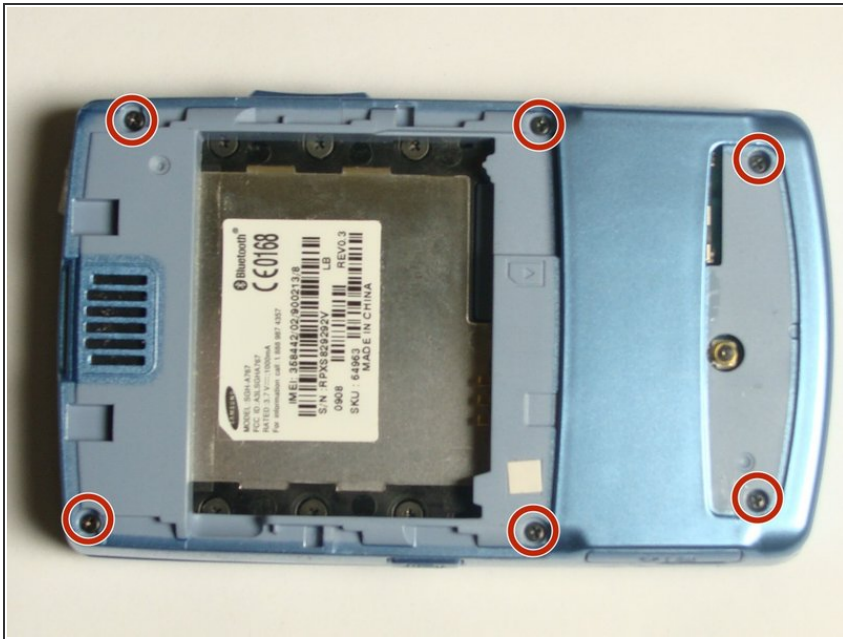
- Press down the back and push up to remove back cover.
- Insert finger into gap at the top left and remove battery.

Step 2 — Motherboard



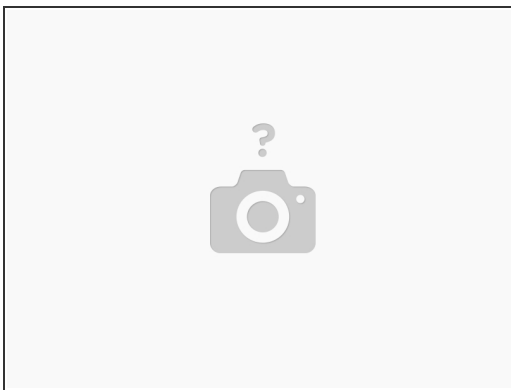
- Use flat-head screwdriver to remove back lid.

Step 3



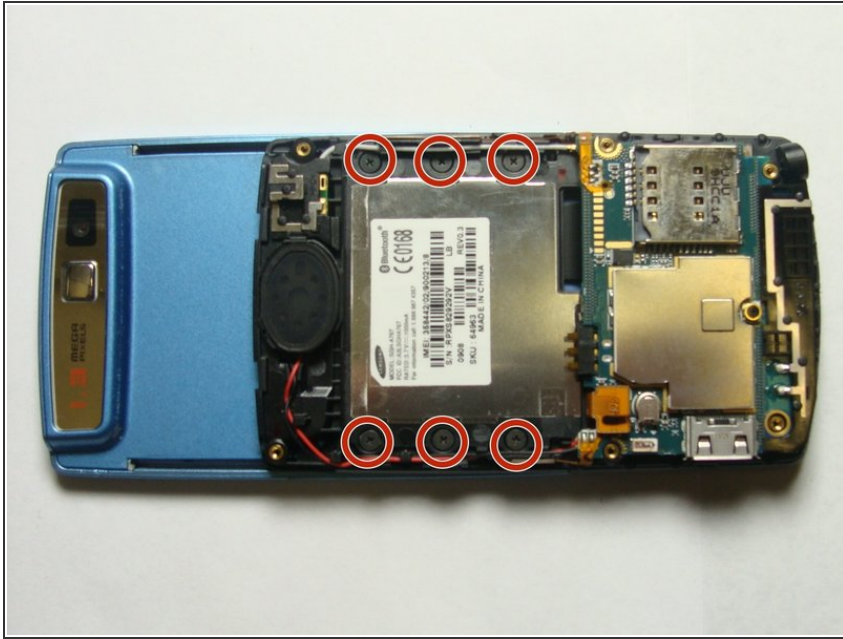
- Locate the six screws and remove them with Phillips #00 Screwdriver.

Step 4



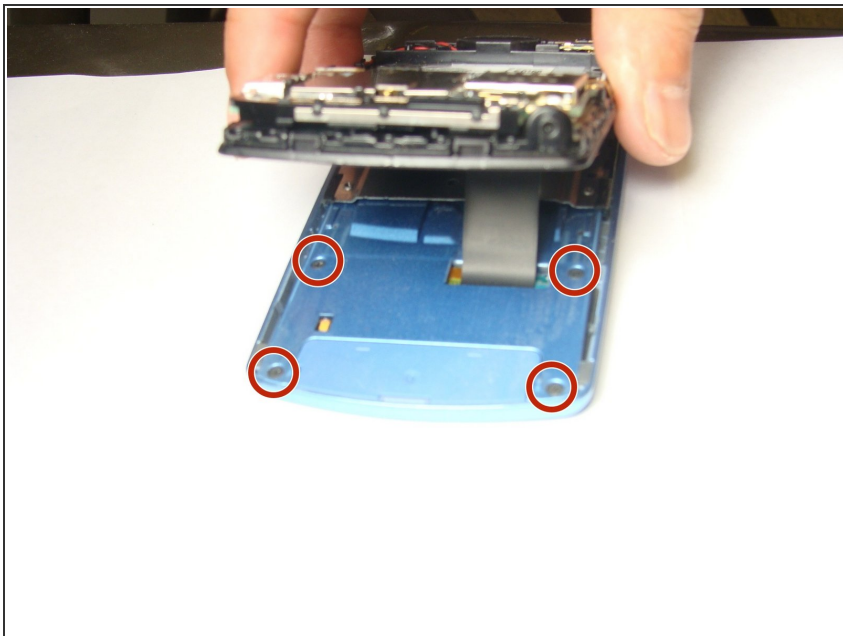
- Insert the flat-head screwdriver into the crevice.
- Slide and dislodge snap-ons under.
- Remove the back frame.

Step 5



- Locate and remove the six screws with Phillips #00 Screwdriver.
- Separate the black middle frame from the front frame.
- ⚠ Be careful not to tear the phone bus.

Step 6



- Locate and remove the four screws with Phillips #00 Screwdriver.

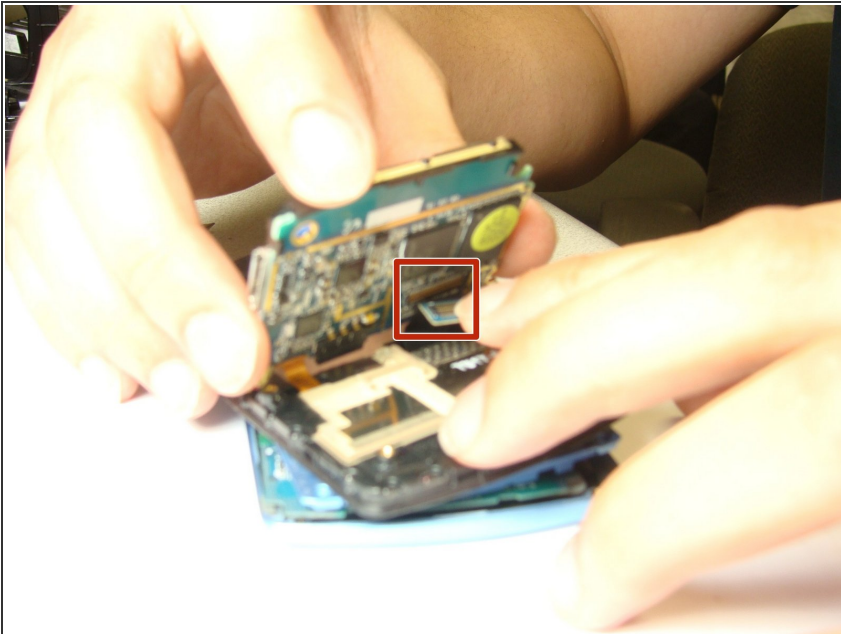
Step 7



- Insert the flat-head screwdriver into the crevice.
- Slide the flat-head screwdriver and dislodge the snap-ons under.

⚠ Be careful not to rip the band.

Step 8



- Use hands to remove both phone buses from the linkages, and remove motherboard.

To reassemble your device, follow these instructions in reverse order.