



# Canon Powershot S200 Battery Replacement

If your battery becomes inoperable or loses a charge quickly, consider replacing the battery by following these simple steps.

Written By: Kevin Nagaoka



## INTRODUCTION

We will be safely removing the battery from the camera.

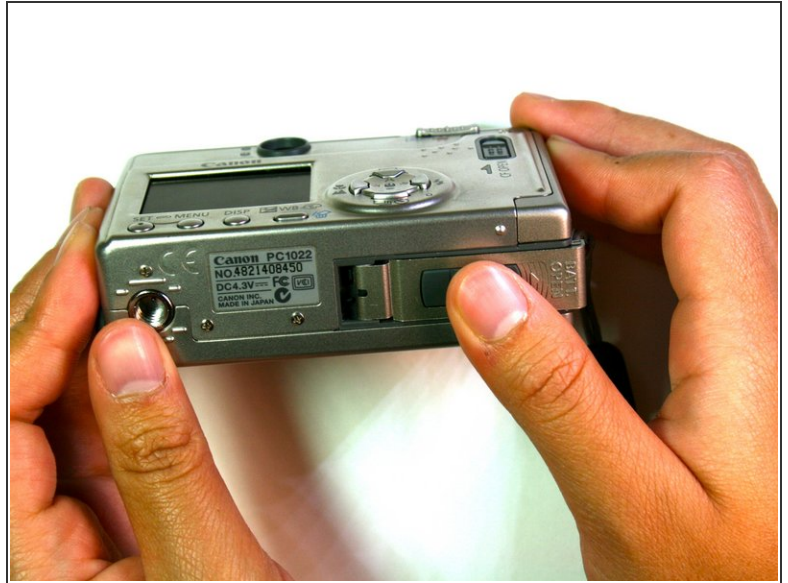
---



### PARTS:

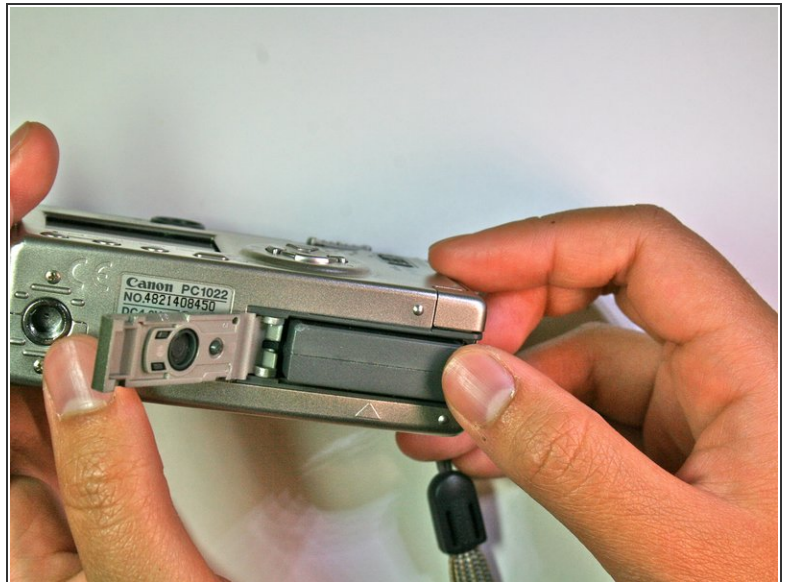
- [Canon Powershot S200 Battery](#) (1)
-

## Step 1 — Battery



- Slide grey latch to open the battery compartment.

## Step 2



- Push orange retaining clip to the right to free battery.

### Step 3



- Remove battery from the camera.

To reassemble your device, follow these instructions in reverse order.

This document was last generated on 2019-01-15 10:55:33 AM.