



Microsoft Surface 2 Screen Replacement

Replace the screen of the Microsoft Surface 2.

Written By: EG1



INTRODUCTION

If the screen is failing, or if you need to access a component within the Microsoft Surface 2, you may need to remove the screen. A heat gun is recommended for this process. When using the heat gun, avoid touching the metal end and keep it a few inches from the device.



TOOLS:

- [Heat Gun](#) (1)
- [iOpener Kit](#) (1)
- [Spudger](#) (1)
- [iFixit Opening Picks set of 6](#) (1)



PARTS:

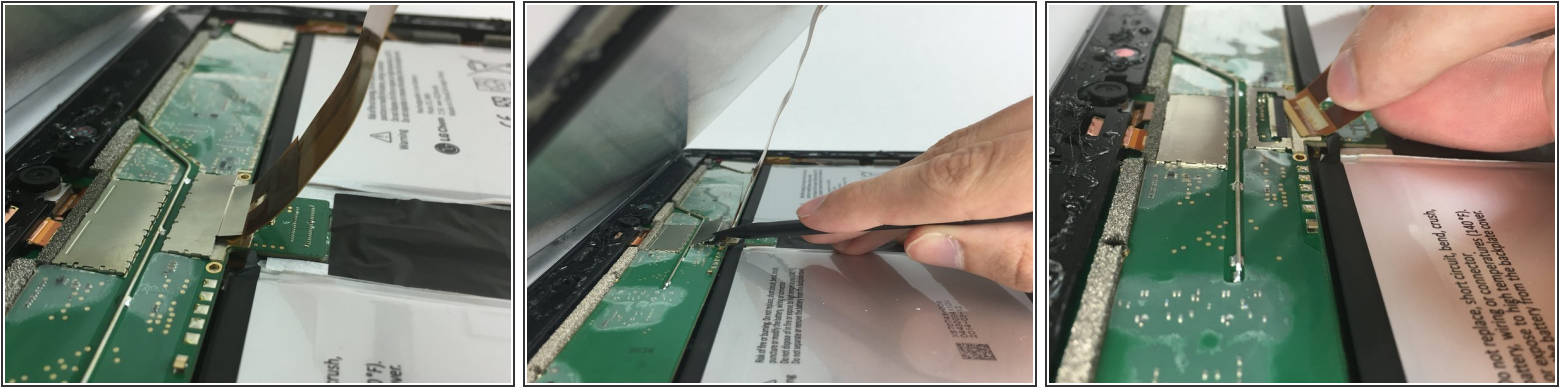
- [Surface 2 Screen](#) (1)

Step 1 — Screen



- Begin by using a heat gun or the iOpener (This will take longer.) to melt the adhesive all around the outer edge of the screen.
- ⚠ Avoid holding the heat gun too close to the Microsoft Surface 2 so as to not cause any unwanted warping.
- ⚠ Avoid touching the metal end of the gun. It will be very hot and can burn you.
- Insert the opening picks just under the screen and black edging. Be sure to place them evenly on each side.
- Using the gap created by the picks, slowly pry the screen from the body of the Microsoft Surface 2 with a plastic opening tool. Pry as uniformly as possible.

Step 2



- ⓘ Once the screen is free from the body, there will be a single ribbon cable connecting the screen to the motherboard.
- Use a plastic spudger to pry the retaining clip away from the display cable.
- ⓘ The ribbon cable may be glued to the motherboard.
- Carefully pull the ribbon cable from its socket on the motherboard.

To reassemble your device, follow these instructions in reverse order.