



MacBook Core 2 Duo Replacing the top board

Written By: Uhucream



INTRODUCTION

Let's remove the top board of the MacBook Core 2 Duo model and exchange it for a new keyboard / track pad.

Step 1 — Top board



- Please remove the following three screws:
 - One Phillips # 000 screw (screw head: diameter 5 mm, thickness 0.75 mm) of 11 mm in length in the middle of the case is one
 - Two Phillips # 000 screws (screw head: diameter 5 mm, thickness 0.75 mm) with a length of 14.5 mm are two
- ⓘ If the screw will get stuck to the case, you can remove the screw by sticking with a magnetic driver.
- ✦ The shortest screw among the three comes in the middle.

Step 2



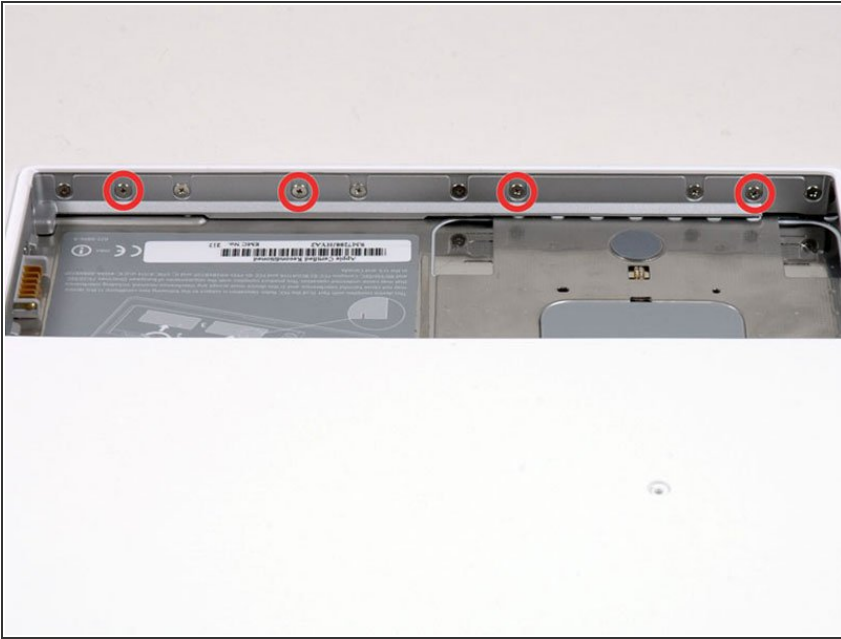
- Take out the battery and the 3 screws inside the battery compartment.
 - One 3mm long phillips head #0 screw (Screw diameter: 2.75mm)
 - On either side there are two 4mm long Phillips head #0 screws. (Screw head diameter is 2.27mm)

Step 3



- Please remove the following two screws at both ends of the partition on the right side of the battery. (The screw closer to the battery connector is only fixing the battery connector, so it is not necessary to remove it.)
- Two Phillips # 000 screws (screw head: diameter 4 mm, thickness 0.5 mm) with a length of 6.25 mm are two

Step 4



- Please remove the four screws indicated by the red circle of the image on the partition of the battery on the front side of the main unit. It is the 2nd, 4th, 7th, 9th screw from the left.
- Four Phillips # 000 screws (screw head: 4 mm diameter, 0.4 mm thickness) with a length of 3.25 mm

Step 5



- Please remove the following four screws on the back side of the computer:
- The long screws are inside and the short screws are outside both ends.
- There are two Phillips # 00 screws (shank dimension: 2.2 mm in diameter, 2 mm in length) (screw head: 3.2 mm in diameter, 0.5 mm in thickness) with a long 11 mm shank
- There are two Phillips # 00 screws (shank dimension: 2 mm in diameter, 3.75 mm in length) (screw head: 3.2 mm in diameter, 0.5 mm in thickness) with a shank of 7.25 mm in length

Step 6



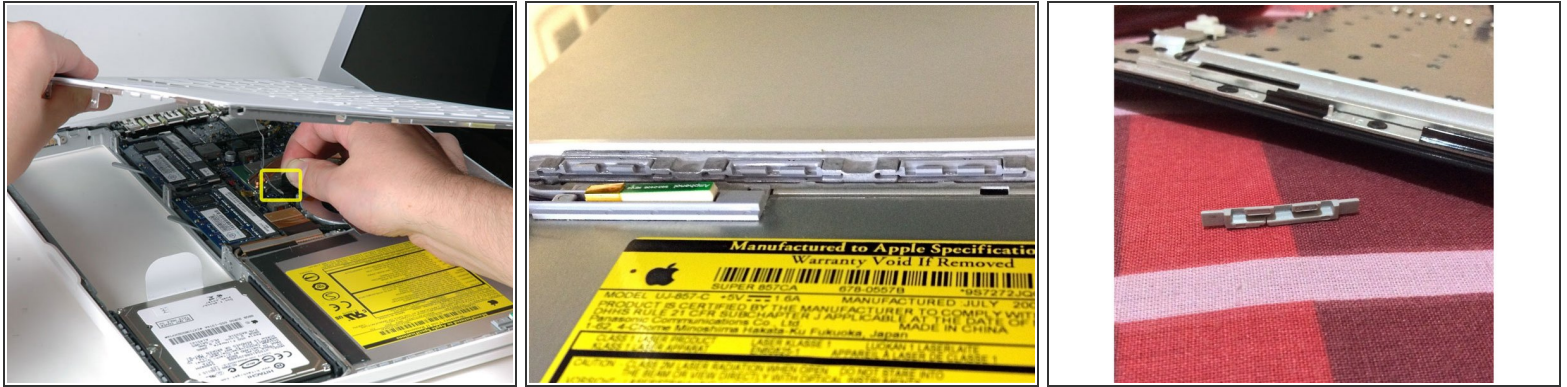
- Please remove the two screws on the optical drive side of the computer.
 - Phillips # 00 screw with shank of 5.2 mm in length (Shank dimensions: diameter 2.3 mm, length 3.5 mm) (screw head: diameter 3.2 mm, thickness 5 mm)
- i** The same screw on the opposite side of the optical drive is the decorative so you do not have to remove it.

Step 7



- ⚠** Since the keyboard and the track pad of the top board are connected with the logic board with the ribbon cable, please never forcibly pull out. The ribbon cable may be torn down.
- Let's detach the top board on the principle of lever (lever) so that it goes around from the screen side to the front side of the computer. If you use the [plastic opening tool](#) or a stiff guitar pick, you can easily remove it.
- i** As the top of the optical drive top seems to stick together, please put a guitar pick etc. on both sides of the optical drive that is not sticking first and remove the top board with a lever.
- i** After removing the work, the four gray plastic clips holding the keyboard may be disengaged, but please do not rush. There is a part where you put the clip in the corner of CD drive periphery right side corner and there is no problem if you slide the clip into it and set it there.

Step 8



- While lifting the top board, please pull the black tab on the connector part of the silver cable upwards and remove the connector.
- ⓘ If there is no black tab it is possible to remove the connector from the connector housing by using the spatger with the lever principle. Because this connector is long, please be sure to remove it straight up.
- ⓘ Even if you disconnected the cable attached to the top board when removing the top board, please be assured that iFixit sells the [cables](#) individually. There is an [exchange guide](#), it can do easily.
- How about trying as an opportunity to remove dust, hair, etc while removing the top board? The best is to use a can containing compressed air. If you do it with a solid brush made of building materials (using common animal hair), static electricity will be generated and you can destroy your computer.
- ⓘ In reassembling, please confirm that the four gray plastic clips are on the optical drive side of the keyboard. (Please refer to the second image.) Please firmly attach the clip so that the keyboard is securely fixed.
- ⓘ To ease the reassembly process, it is better to clip the clip part. Please note that doing with a strong force may cause damage.
- ⓘ (Translator's comment) Since it will not be fixed unless you attach it with a strong force when fixing the keyboard, the insertion opening of the optical drive may be distorted with a strong force.
- ⓘ There is no worry about being distorted if you put half of the disc such as a DVD and the credit card etc which you no longer need into the insertion opening in half.

To assemble your device, please follow these steps in reverse order.