



# Motorola Slvr L7 Battery Replacement

A Step-by-Step process on how to replace the Motorola battery.

Written By: Jorge Trujillo



---

## INTRODUCTION

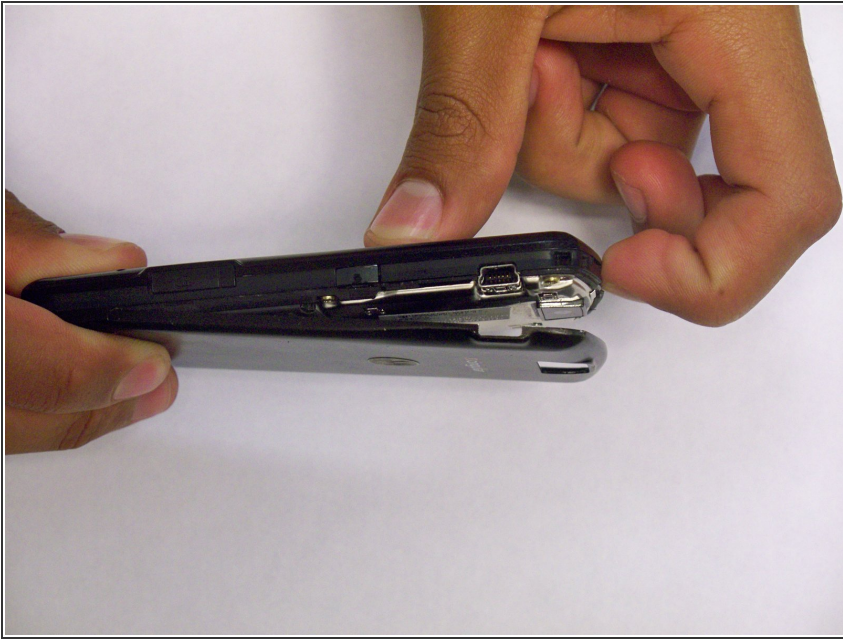
The Motorola SLVR L7 is a compact phone that does not have an excess amount of components to it. However, since the phone is so small and thin, these components are held together with very small screws, tabs, etc. The methods used to disassemble the phone are ones that are able to be done with slightly more common tools than specialized ones.

---

### TOOLS:

- [Heavy-Duty Spudger](#) (1)
  - [Phillips #00 Screwdriver](#) (1)
  - [T6 Torx Screwdriver](#) (1)
-

## Step 1 — Battery



- Remove the phone back cover by pushing down on the black tab located at the top center of the Motorola Phone.

## Step 2



- Remove the battery by pulling the battery from the top center.

To reassemble your device, follow these instructions in reverse order.