



MacBook Pro 15" Unibody Early 2011 Battery Connector Replacement

Disconnecting battery connector. Internal Prereq.

Written By: Walter Galan



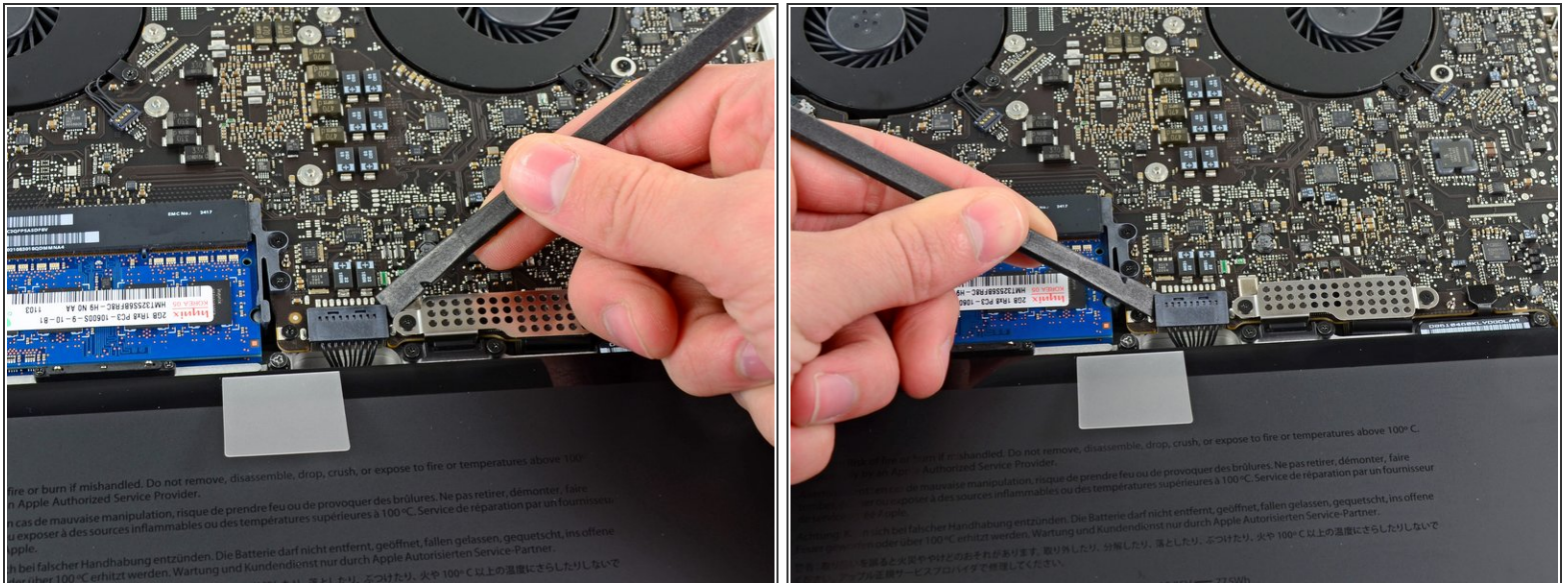
INTRODUCTION

Disconnecting Battery Connector. Internal Prereq.

TOOLS:

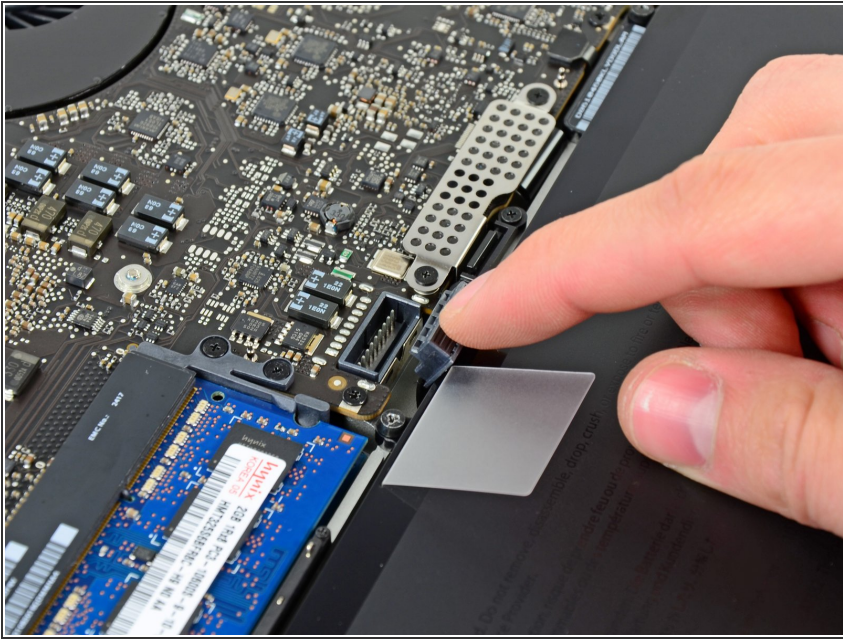
- [Spudger](#) (1)
-

Step 1 — Battery Connector



- ✦ For certain repairs (e.g. hard drive), disconnecting the battery connector is not necessary but it prevents any accidental shorting of electronics on the motherboard. If you do not disconnect the battery connector, please be careful as parts of the motherboard might be electrified.
- Use the edge of a spudger to pry the battery connector upwards from its socket on the logic board.
- i It is useful to pry upward on both short sides of the connector to "walk" it out of its socket.

Step 2



- Bend the battery cable slightly away from its socket on the logic board so it does not accidentally connect itself while you work.

To reassemble your device, follow these instructions in reverse order.