



iMac Intel 21.5" EMC 2428 Camera Board Replacement

Replace the camera board in your iMac Intel 21.5" EMC 2428.

Written By: Walter Galan



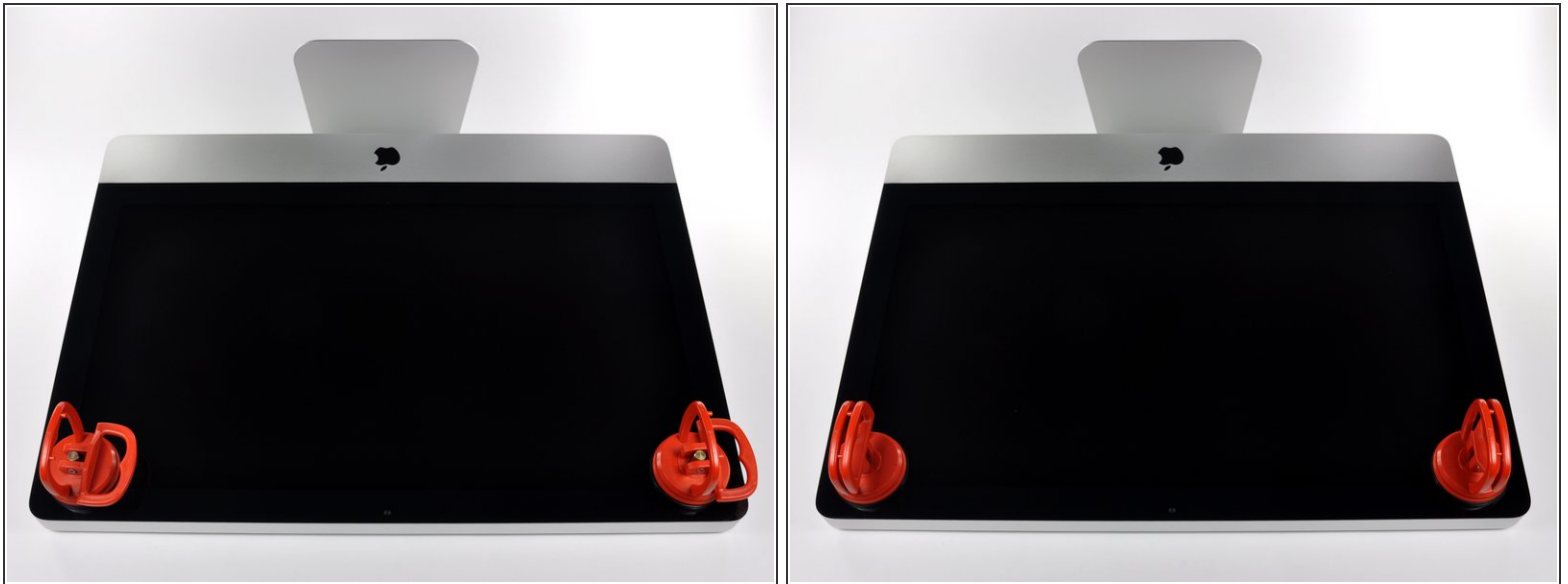
INTRODUCTION

Replace a broken camera board to regain iSight functionality.

TOOLS:

- [Heavy-Duty Suction Cups \(Pair\)](#) (1)
 - [T10 Torx Screwdriver](#) (1)
-

Step 1 — Glass Panel

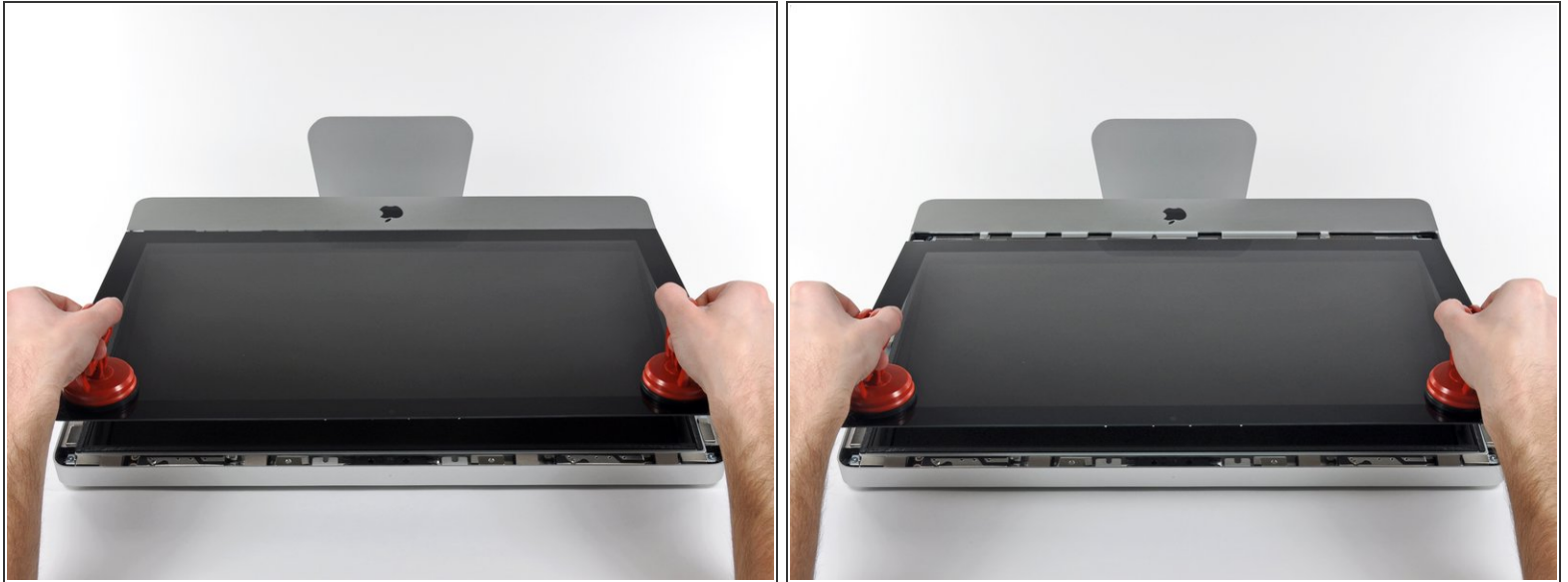


- i** Before beginning, unplug your iMac and lay it on a soft surface as shown.

 - Stick a suction cup near each of the two top corners of the glass panel.
- i** To attach the [suction cups](#) we sell, first position the suction cup with the movable handle parallel to the face of the glass panel. While lightly holding the suction cup against the glass, raise the movable handle until it is parallel with the other handle.

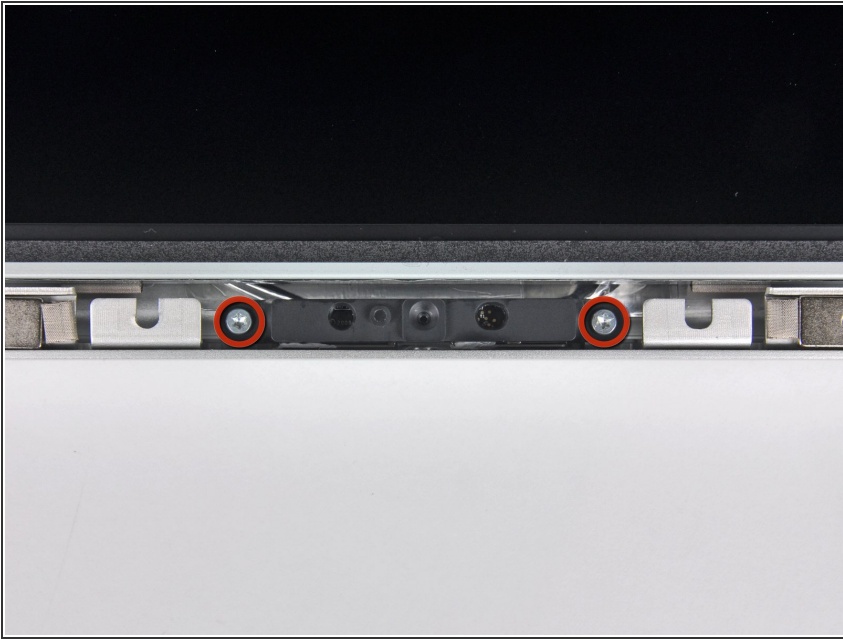
 - If your suction cups refuse to stick, try cleaning both the glass panel and the suction cup with a mild solvent.

Step 2



- Gently lift the glass panel perpendicular to the face of the LCD enough to clear the steel mounting pins attached along the underside of the top edge of the glass panel.
 - Pull the glass panel away from the lower edge of the iMac and carefully set it aside.
- During reinstallation, be sure to meticulously clean the inside of the glass panel and the face of the LCD as any dust or fingerprints trapped inside will be annoyingly visible when the machine is turned on.

Step 3 — Camera Board



- Remove the two 5.2 mm shouldered T10 Torx screws securing the camera board to the outer case.

Step 4



- Lift the camera board out of the outer case, minding the cable attaching it to the logic board.
- Disconnect the camera board by pulling its connector away from the socket on the camera board.
- ☑ Before reinstallation, be sure that the thermal putty applied to the camera's heat sink is thick enough to make contact with the outer case.

To reassemble your device, follow these instructions in reverse order.