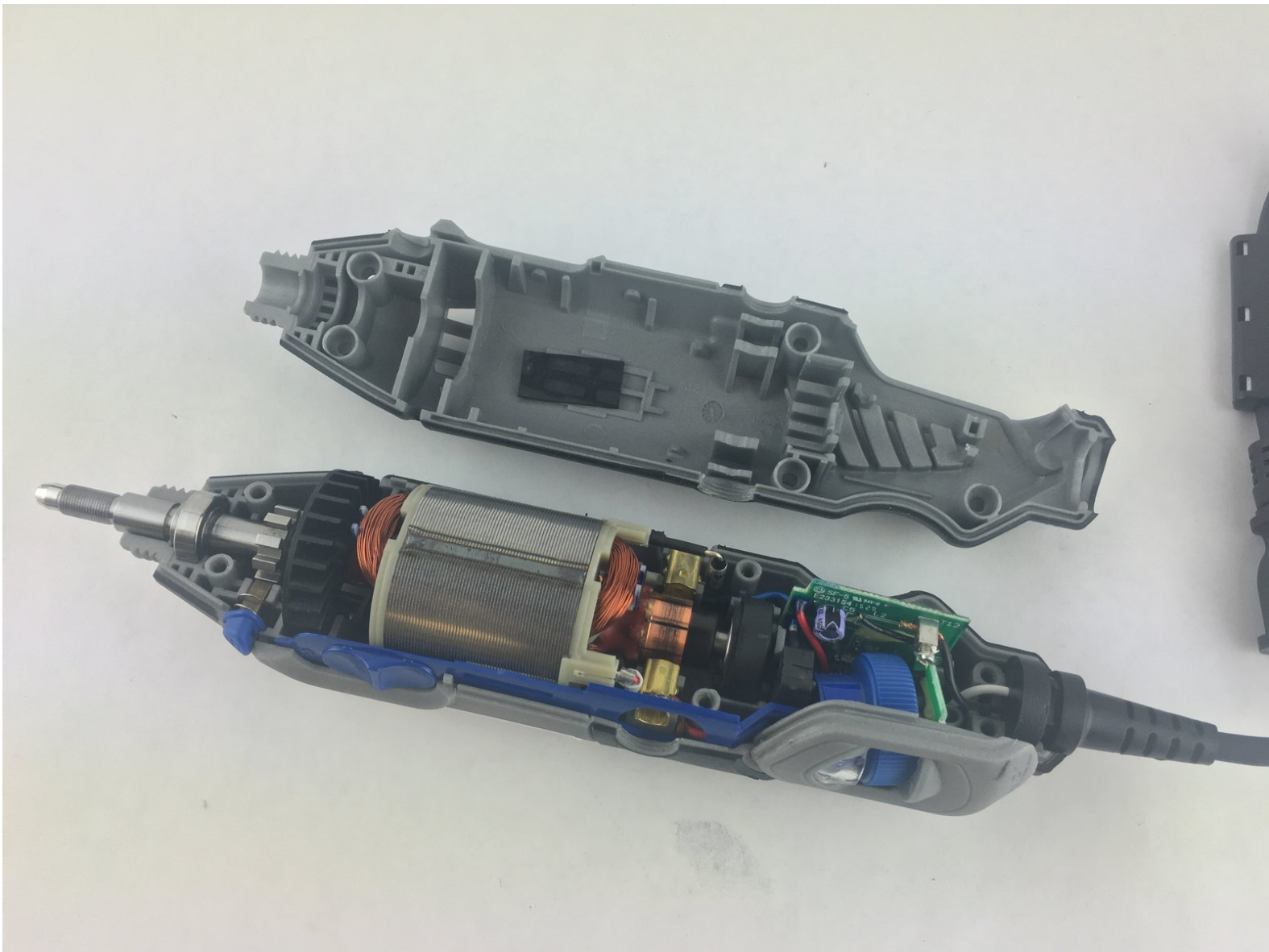




Dremel 4000 Back Case Replacement

This guide will explain how to open the casing of the Dremel 4000. This is the first step in any part replacement.

Written By: John Cobb



INTRODUCTION

This is a prerequisite guide only. In the following steps, you will remove two exterior parts, then remove the screws that hold the casing together.

TOOLS:

- [T15 Torx Screwdriver](#) (1)
 - [Flathead 3/32" or 2.5 mm Screwdriver](#) (1)
 - [iFixit Opening Tools](#) (1)
-

Step 1 — Back Case



- Start by removing the housing cap by unscrewing it.
- Next, unscrew the now exposed collet nut while holding down the shaft lock button.
- ⓘ To remove the collet nut, you may need to use the small open-end wrench provided with the Dremel.

Step 2



- Using your hands, carefully remove hanger from casing.

Step 3



- Remove the brush caps (one on each side) by using a flathead screwdriver bit.
- ⓘ The brush caps are spring loaded.

Step 4



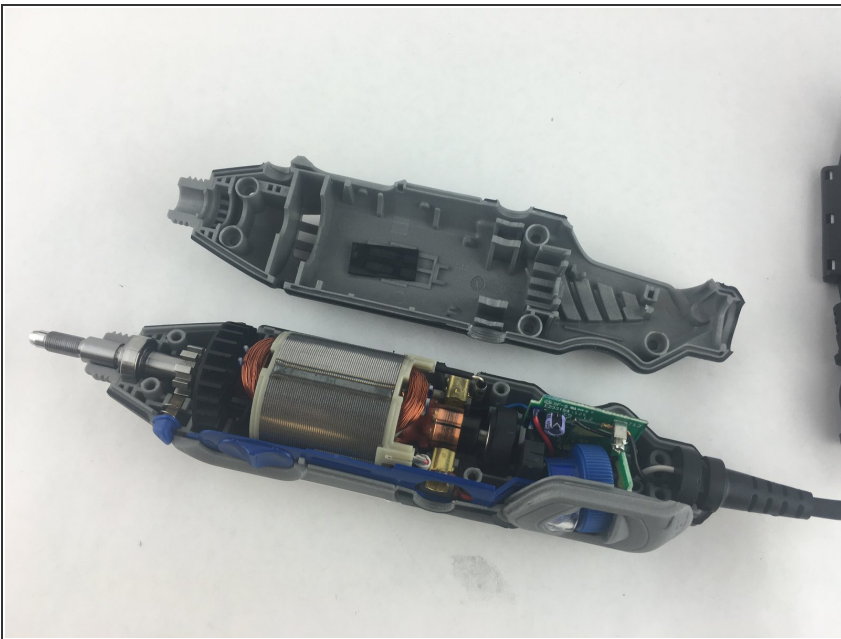
- Using the Torx 15 screwdriver tip, remove the 5 screws (12.5 mm) that hold the casing together.

Step 5



- Use a plastic opening tool to gently wedge apart the hard plastic threads.

Step 6



- Use your hands to carefully remove the back casing so that none of the components fall out.

To reassemble your device, follow these instructions in reverse order.