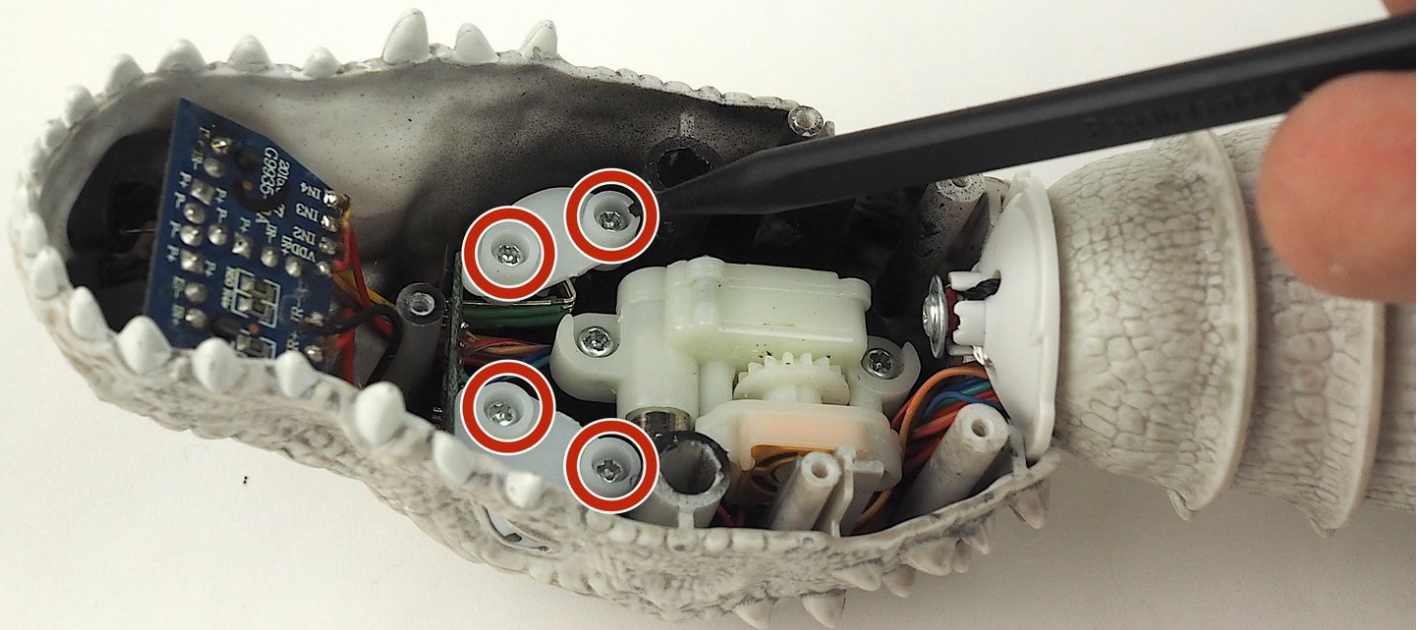




# Zoomer Jurassic World Indominus Rex Eye LED Replacement

This guide shows step by step way to replace the LED lights from the eye of the Zoomer Jurassic World Indominus Rex

Written By: Luke Selby



---

## INTRODUCTION

Our mighty Indominus Rex is blind! The LEDs in his eyes are not functional. Let's figure out what's going on and fix him up!

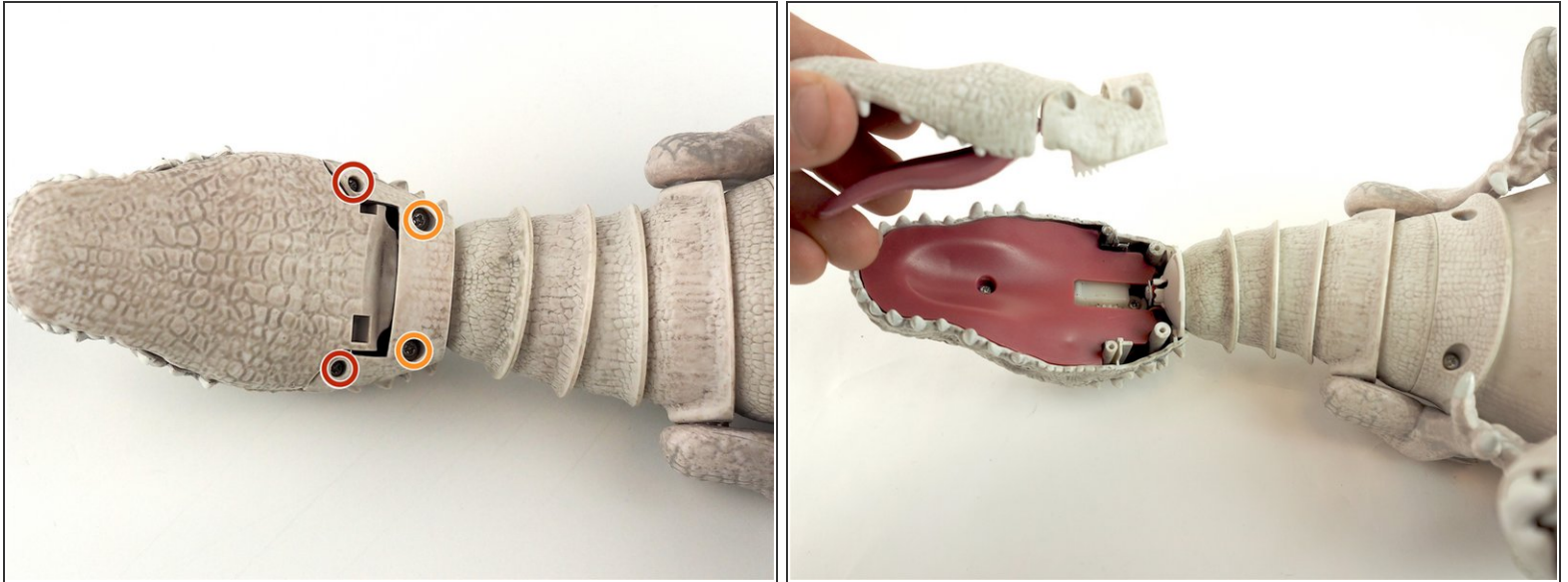
Knowing how to solder before attempting this guide is extremely encouraged. Details about soldering technique guide can be found at the last step of this guide.

---

### TOOLS:

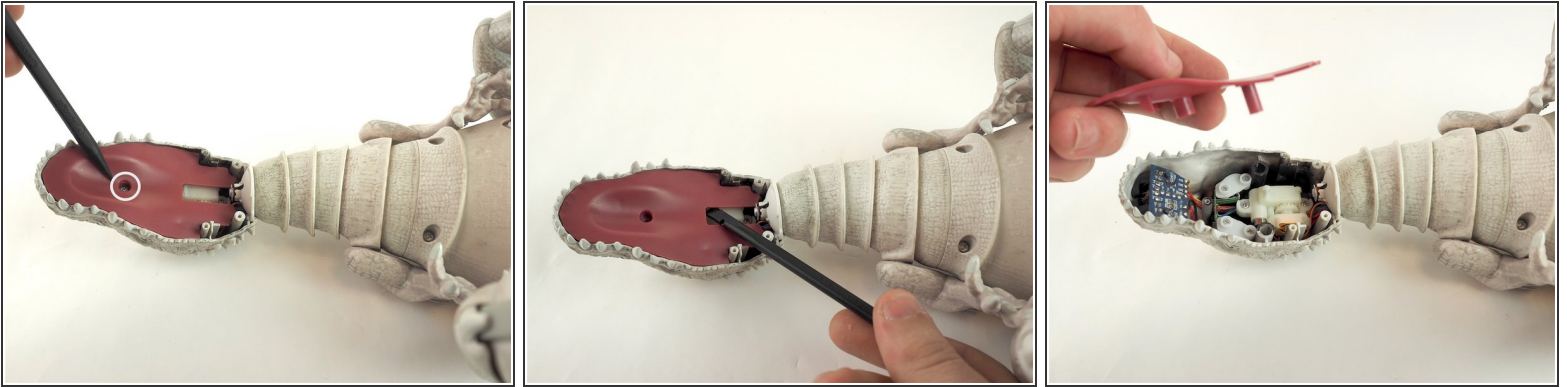
- [Soldering Iron](#) (1)
  - [Soldering Workstation](#) (1)
  - [Soldering Tweezers](#) (1)
  - [Tweezers](#) (1)
  - [Heavy-Duty Spudger](#) (1)
  - [Phillips #1 Screwdriver](#) (1)
  - [Phillips #0 Screwdriver](#) (1)
-

## Step 1 — Mouth Part



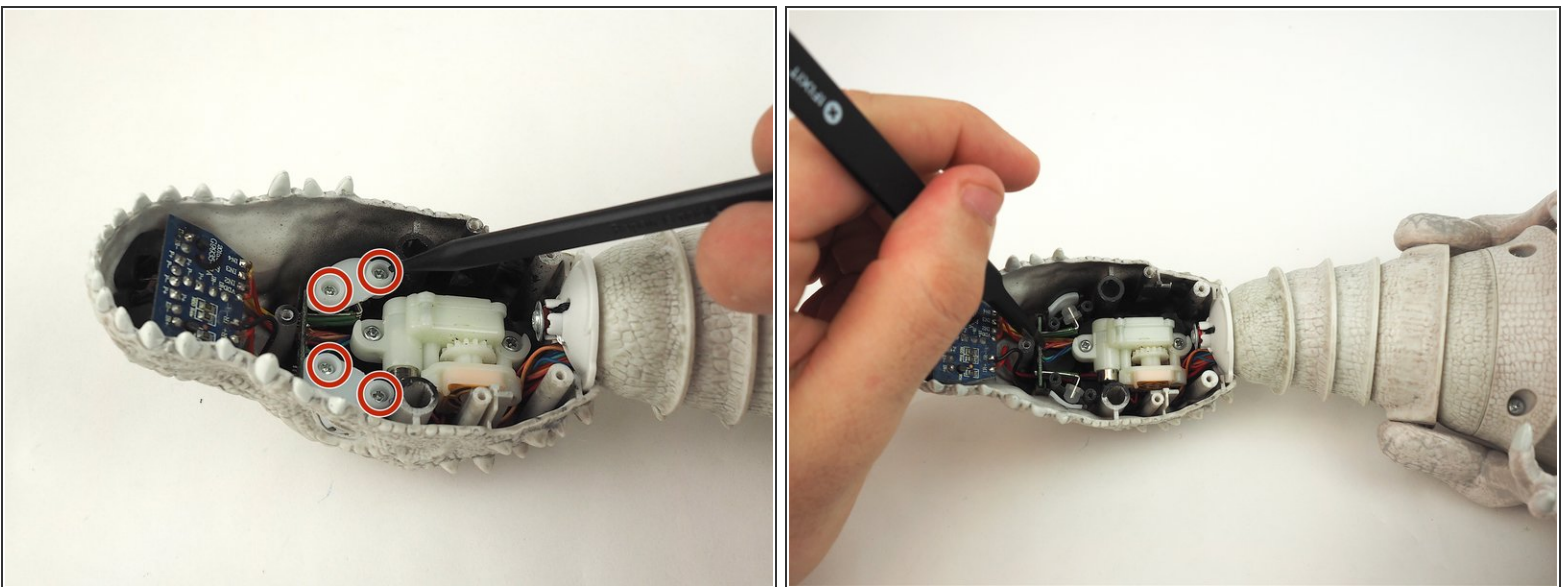
- i** Flip the toy over to gain direct access to the first screws you need to remove for the replacement.
- Remove the two (2) 7.5mm phillips screws using Phillips #1 screwdriver from the bottom of the jaw.
  - Remove the two (2) 7.2mm phillips screws using Phillips #0 screwdriver from the bottom of the jaw.
  - Gently remove the entire bottom jaw piece.

## Step 2



- Remove the 7.5mm phillips screw using Phillips #1 screwdriver from the middle of the tongue.
- Using a spudger, gently pry the tongue out of the mouth.

## Step 3 — Eye LED

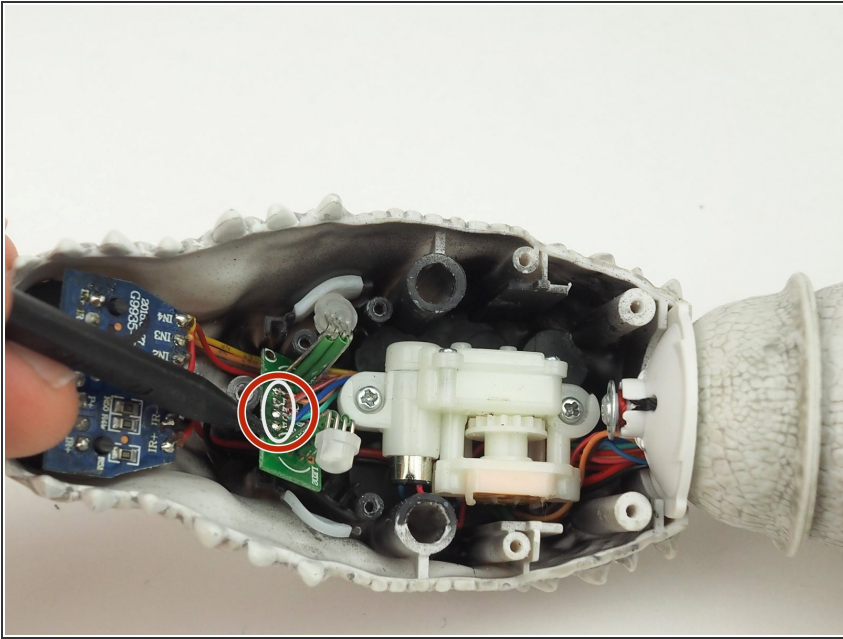


- Remove the four (4) 7.5mm Phillips screws from the pieces holding the circuit board for the LEDs in place.
- Use tweezers to pull the circuit board out of place.

⚠ Pull directly upward! Be careful not to break the circuit board during removal.



## Step 4



- Use a soldering iron to disconnect the four (4) wires from the circuit board.
- ⓘ Soldering technique guide from iFixit can be found [here](#).
- ⚠ Be careful not to burn yourself or the plastic while soldering!

To reassemble your device, follow these instructions in reverse order.