



ATT CL2940 Handset Cord Replacement

Instructions on how to remove and replace the handset cord on ATT CL2940.

Written By: Charles Messmore



INTRODUCTION

This guide will help you if you experience difficulty hearing from the ATT CL2940 handset. The issue may be with the handset cord. Use this guide to remove the cord and reattach it to determine if it was not plugged in securely. If this does not fix the problem, try replacing the old cord with a new one.

Step 1 — Handset Cord



- Locate the plug-in jack on the bottom right side of the phone.

Step 2



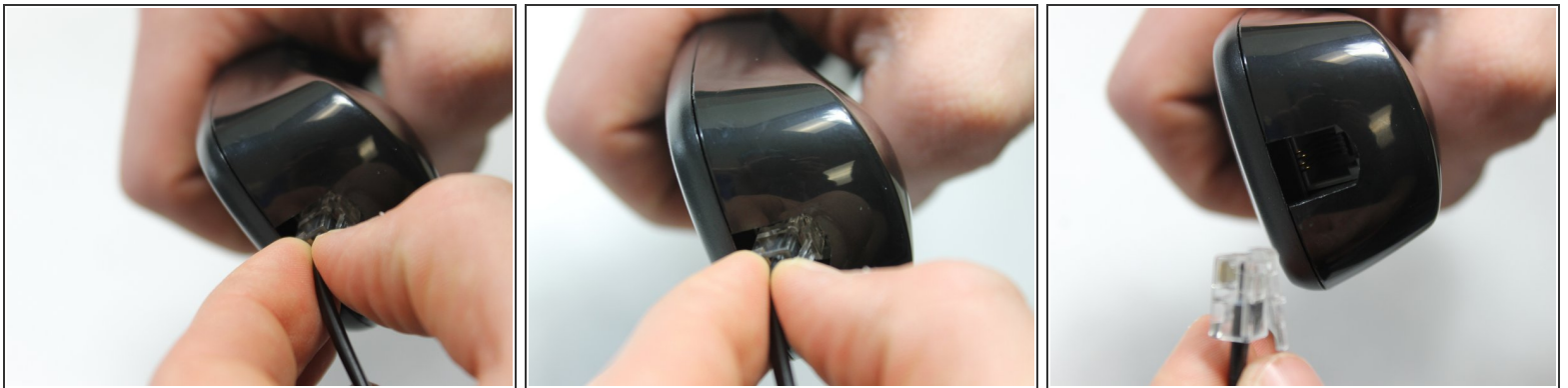
- Pinch the clip on the plug and pull the cord from the base in order to release the cord.

Step 3



- Locate the plug-in jack on the handset.

Step 4



- Pinch the clip on the plug and pull away from the handset in order to release the cord.

To reassemble your device, follow these instructions in reverse order.