



# Bosch PS21 Gearbox (Clutch) Replacement

Replace the gearbox (clutch) in your Bosch PS21.

Written By: Getsemani Gonzalez



---

## INTRODUCTION

Use this guide to replace the gearbox in the Bosch PS21. If the clutch is not working, the gearbox will need to be replaced. Be sure to remove the battery before disassembling the device.

---

### TOOLS:

- [Small Needle Nose Pliers](#) (1)
  - [iFixit Opening Picks set of 6](#) (1)
  - [64 Bit Driver Kit](#) (1)
  - [Tweezers](#) (1)
  - [Metal Spudger](#) (1)
  - [T8 Torx Screwdriver](#) (1)
-

## Step 1 — Battery



- Pinch the two release tabs on the sides of the battery, and slide the battery out.

## Step 2 — Gearbox



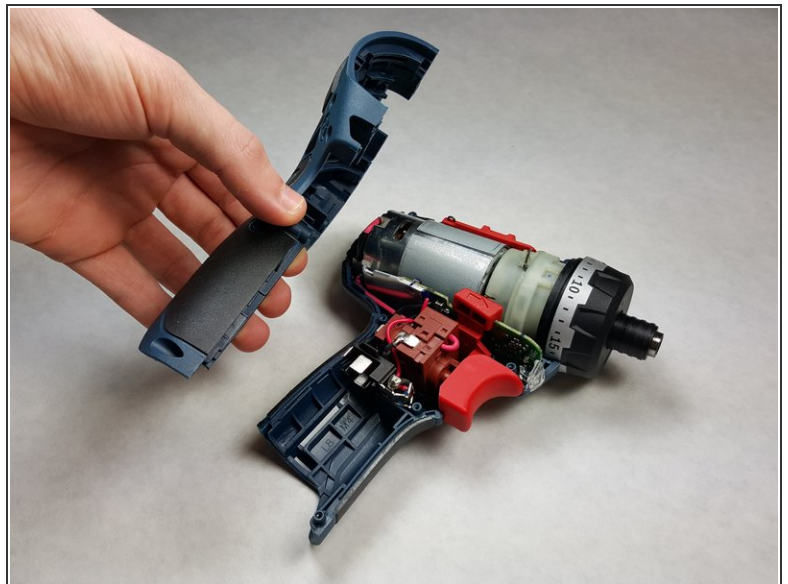
- Locate the clip that binds the two halves of the outer casing together on the rear edge of the battery shaft. Remove the clip with the angled tweezers.

### Step 3



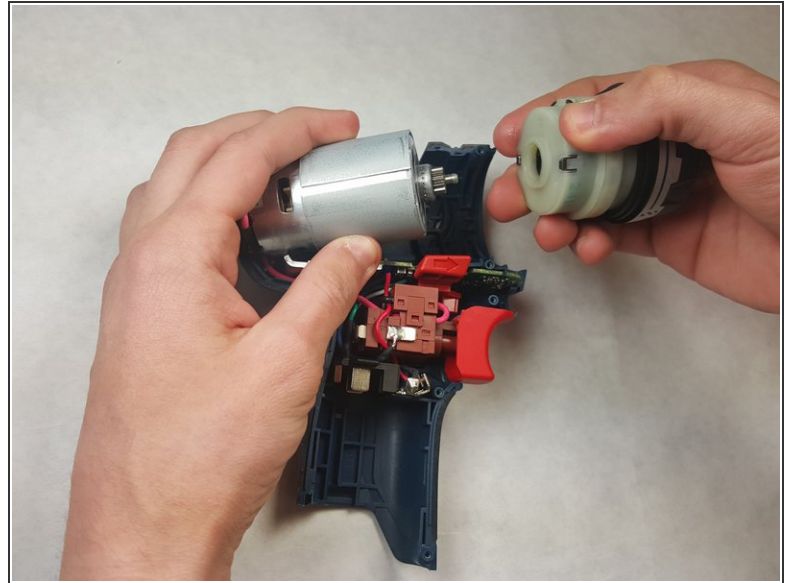
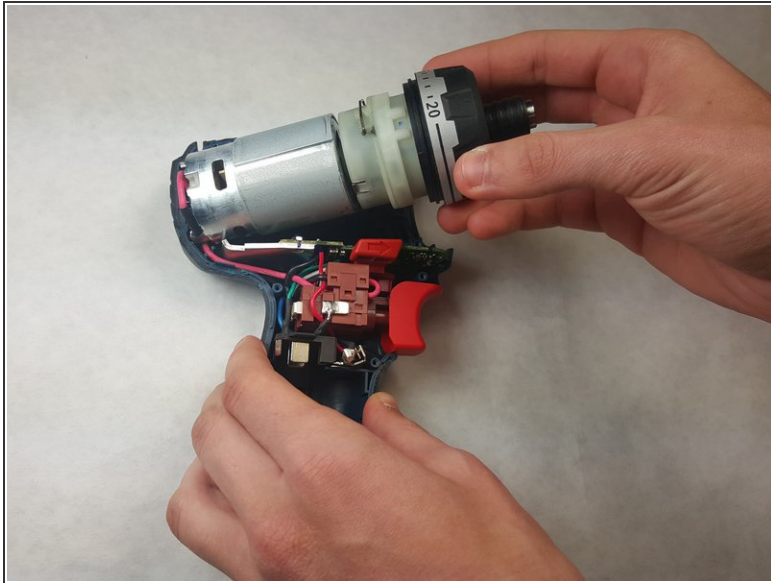
- Locate the eight 5.5 mm screws on the upwards facing side of the drill.
- Remove each screw using the T8 Torx screwdriver and place them together in a safe place.

### Step 4



- Remove the upper portion of the case from the outer portion of the case using a metal spudger.

## Step 5



- Dislodge the motor assembly from the casing.
- Remove the gearbox from the motor assembly.

To reassemble your device, follow these instructions in reverse order.