



Sony Cyber-shot DSC-W800 Button Board Replacement

Replace the malfunctioning Button Board on your Sony Cyber-shot DSC W800. This should restore your device to its default operating condition.

Written By: Thomas Campo



INTRODUCTION

Some things to consider before you work on the Sony Cyber-shot DSC W800 to replace the Button Board:

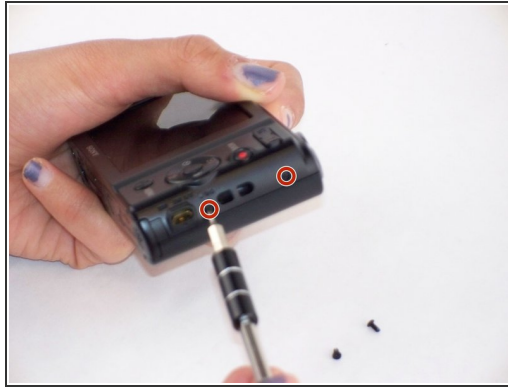
- The Button Board is an integral part of the device and any improper handling can cause issues in other parts of the camera.
- Be cautious when removing ribbon wires.
- Be sure to keep track of all pieces that are taken apart.



TOOLS:

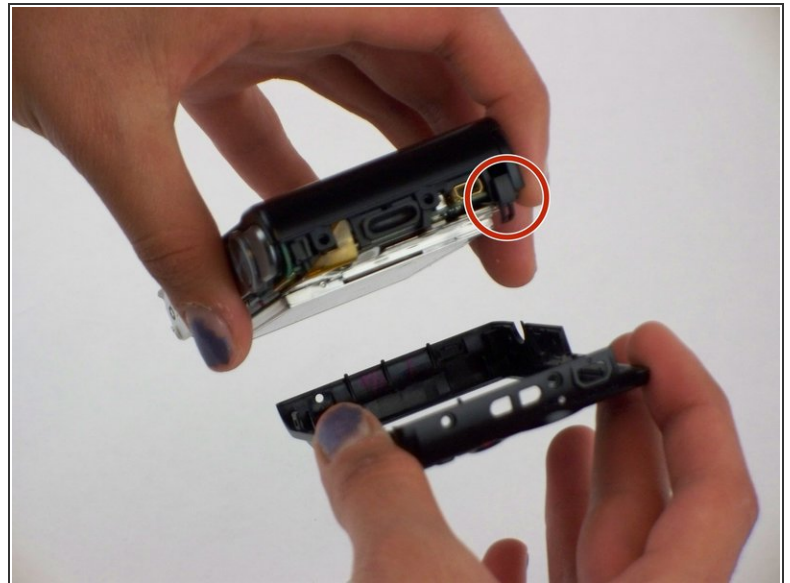
- [Spudger](#) (1)
 - [Tweezers](#) (1)
 - [Phillips #000 Screwdriver](#) (1)
-

Step 1 — Button Board



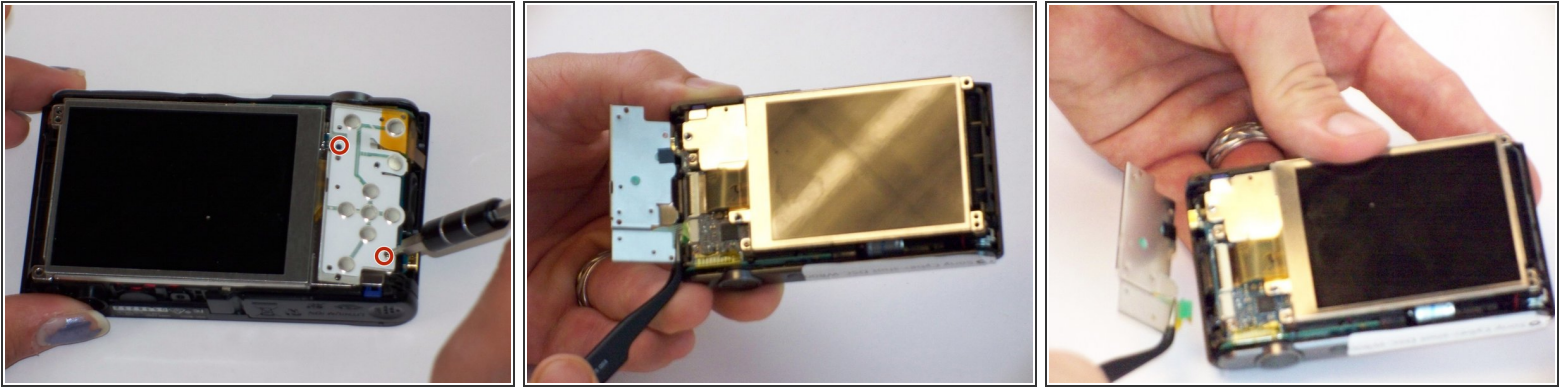
- Remove the five 4.0 mm Phillips #000 screws on the back panel.

Step 2



- Using the Spudger, remove the back panel from the device.
- The loose piece circled in the picture will most likely fall off the camera housing.

Step 3



- Remove the two 2.15mm Phillips #000 screws from the circuit board.
- Gently pull on the ribbon wire from ZIF connector with the tweezers to remove the button board.

⚠ Ribbon wires can easily be damaged.

To reassemble your device, follow these instructions in reverse order.